



Hawker Drive, Addlestone, KT15 2FP



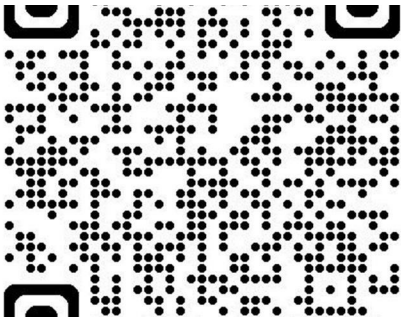


Offered to the market with no onward chain, this modern two-bedroom end-terrace home presents an excellent opportunity for comfortable living. Built in 2016 by Redrow Homes, the property boasts spacious accommodation throughout. The front aspect features a fully fitted kitchen with views over the two allocated parking spaces, while the rear aspect living room opens out onto the private garden, which includes two patio areas and an artificial lawn, perfect for relaxation and outdoor entertaining. A convenient WC completes the ground floor.

Upstairs, the generous master bedroom enjoys peaceful rear views of fields with horses grazing and includes built-in wardrobes. The second, smaller double bedroom is equally well-proportioned, and the contemporary family bathroom adds a touch of modern luxury.

Located on the outskirts of Addlestone, this home is just a 5-minute walk from the town centre and railway station, with Weybridge town centre only a little over a mile away.

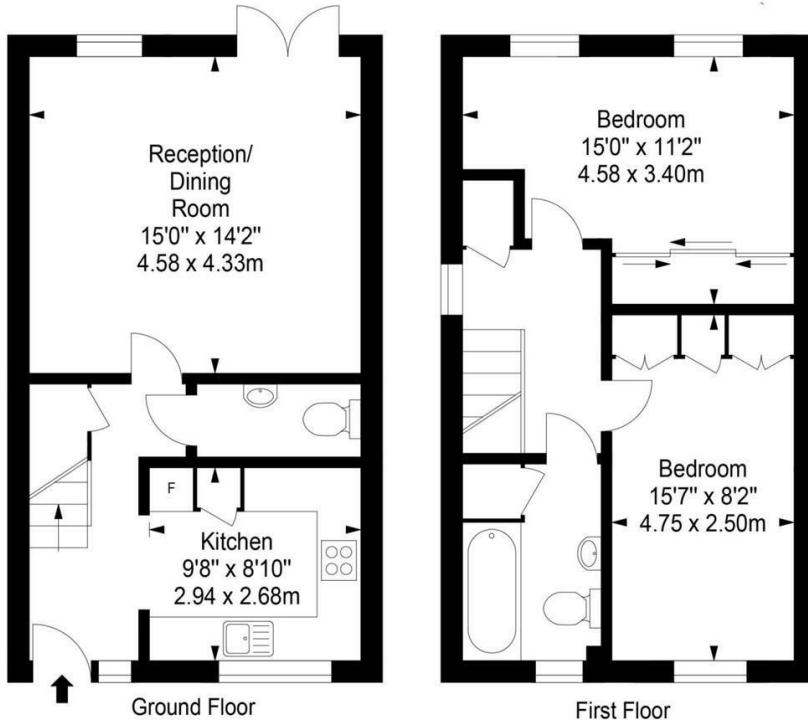
Leasehold





Approximate Area = 813 sq ft / 75.54 sq m

For identification only - Not to scale



Every attempt is made to assure accuracy, however measurements are approximate and for illustrative purposes only. Not to scale.

EPC Rating: 83 B





Grants Homes 155 Station Road, Addlestone, Surrey, KT15 2AT  
T: 01932 858885 E: [addlestone@grantshomes.co.uk](mailto:addlestone@grantshomes.co.uk)

