



Sayes Court, Addlestone, KT15 1LZ

**g**  
**GRANTS**  
**HOMES**



No Onward Chain. A wonderful opportunity to acquire this impressive five-bedroom semi-detached family home, located in one of Addlestone's most desirable areas, and backing onto expansive parkland. Offering over 2,110 sqft (196 sqm) of living space, this property provides generous accommodation across three floors.

The ground floor comprises a welcoming front-aspect living room, a spacious rear dining room with French doors opening onto the expansive garden, a convenient WC, and a large, well-appointed fitted kitchen with a separate breakfast area – perfect for family living.

On the first floor, you'll find three double bedrooms, a modern family bathroom with a white suite and separate shower, and a well-sized single bedroom. The second floor boasts a further double bedroom with access to additional loft storage.

Externally, the front of the property features a driveway with space for at least two vehicles, along with a garage with an up-and-over door. To the rear, a sizeable garden offers a delightful patio area, tiered lawns, and two outbuildings, ideal for storage.

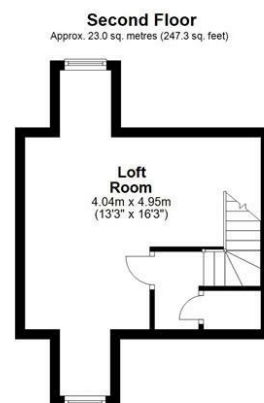
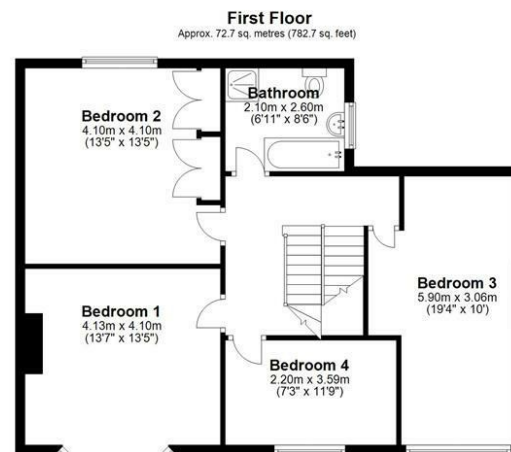
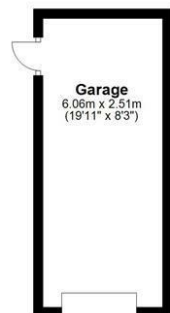
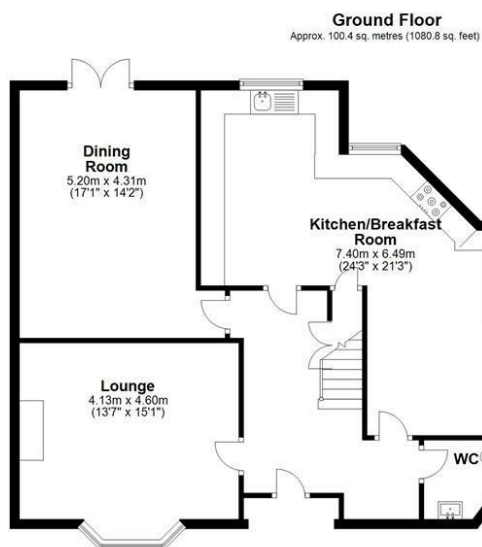
Freehold





EPC: D67





Total area: approx. 196.1 sq. metres (2110.8 sq. feet)  
Floor Plan measurements are approximate and are for illustrative purposes only.  
Plan produced using PlanUp.



Grants Homes 155 Station Road Addlestone KT15 2AT  
T: 01932 858885 E: [addlestone@grantshomes.co.uk](mailto:addlestone@grantshomes.co.uk)

