



Victory Park Road, Addlestone, KT15 2FG





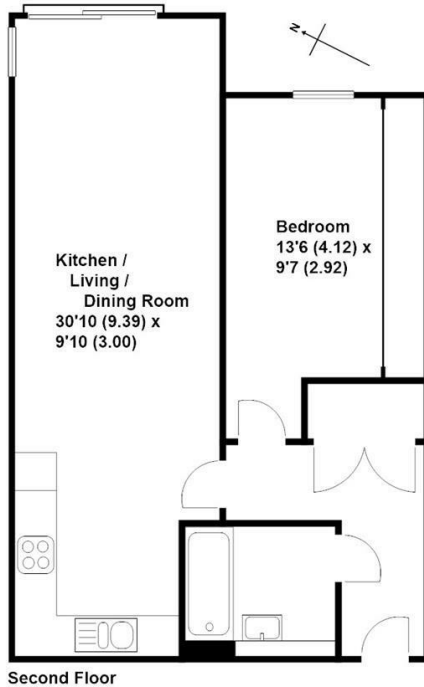
A beautifully presented one-bedroom apartment with secure, undercover gated parking.

Located on the second floor, this spacious property offers convenient access to the town centre and railway station, making it ideal for commuters. The apartment features a generous double bedroom with bespoke fitted wardrobes, a stylish modern bathroom, and a well-appointed kitchen with integrated appliances, seamlessly flowing into the large living area, which is complemented by a Juliet balcony.

Additional highlights include gas central heating, a long lease, and dedicated bicycle storage. With no onward chain, this property is ready to move into and offers a fantastic opportunity for first-time buyers or investors alike.

Leasehold





**Approximate Gross Internal Floor Area - 567 sq/ft - 52.6 sq/mtr**

Grants Independent has prepared these sales particulars for general guidance purposes only. They do not form or constitute any part of an offer or contract. The services, systems and appliances listed in these details have not been tested by us, and no guarantee is given to their operational ability or efficiency. Lease details, service charges and ground rent are given as a guide and should be checked by your solicitor prior to exchange of contracts. These plans are not drawn to scale and are for representational purposes only. Created by [www.visionwithin.co.uk](http://www.visionwithin.co.uk)



**EPC Rating: 83 B**





Grants Homes 155 Station Road, Addlestone, Surrey, KT15 2AT  
T: 01932 858885 E: [addlestone@grantshomes.co.uk](mailto:addlestone@grantshomes.co.uk)



**GRANTS**  
**HOMES**