



216 Station Road, Addlestone, KT15 2PH



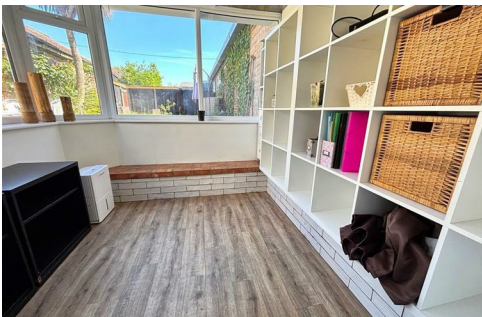


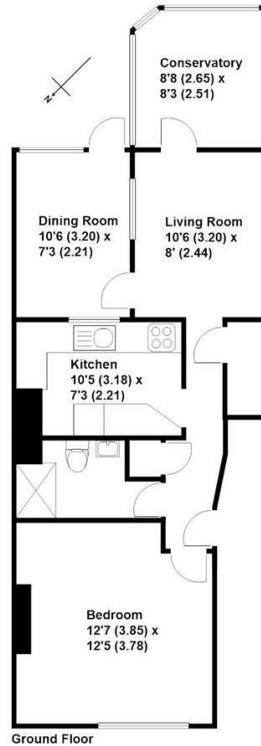
Offered with no onward chain, this unique one-bedroom ground-floor flat boasts a private garden and is perfectly positioned just moments from the town centre and close to the train station. The property has been thoughtfully extended by the current owner, offering a spacious and modern living experience.

The accommodation includes a bright, front-facing double bedroom, a stylish modern shower room, and a well-equipped fitted kitchen. The generous living room flows seamlessly into a conservatory, creating a perfect space for relaxation. A separate dining room adds to the versatile layout, ideal for entertaining.

Outside, the rear garden provides an excellent outdoor space, featuring a patio area, a well-maintained lawn, and a decked section, offering multiple spots to enjoy the outdoors.

Leasehold





Approximate Gross Internal Floor Area - 596 sq/ft - 55.4 sq/mtr

Grants Independent has prepared these sales particulars for general guidance purposes only. They do not form or constitute any part of an offer or contract. The services, systems and appliances listed in these details have not been tested by us, and no guarantee is given to their operational ability or efficiency. Lease details, service charges and ground rent are given as a guide and should be checked by your solicitor prior to exchange of contracts. These plans are not drawn to scale and are for representational purposes only. Created by www.vision4win.co.uk



EPC Rating: 61 D





Grants Homes 155 Station Road, Addlestone, Surrey, KT15 2AT
T: 01932 858885 E: addlestone@grantshomes.co.uk