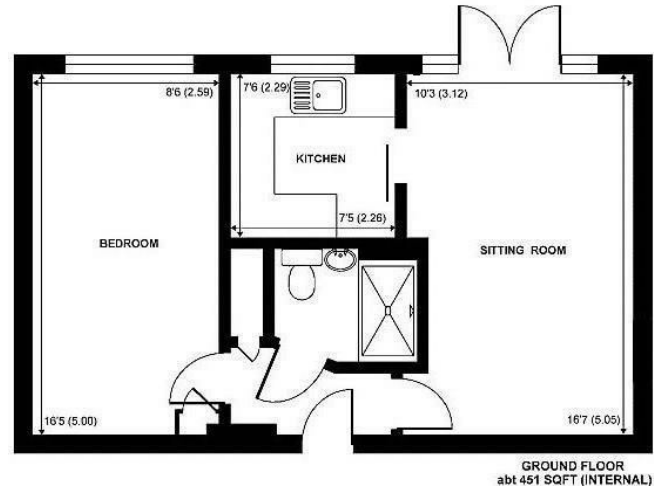




St. Georges Court, St. Georges Road, Addlestone, KT15 2AY

## Guide Price £110,000

Offered to the market with no onward chain, this charming one-bedroom ground-floor apartment is located within a sought-after over 55's (women) and over 60's (men) development in the heart of Addlestone. Just a short walk from local amenities, the property is conveniently positioned near the owners' lounge and the resident manager's office. The apartment features a fully tiled shower room with contemporary white sanitary ware, a spacious double bedroom, and a well-equipped kitchen—both offering pleasant views of the surrounding gardens. The bright and airy living room boasts French doors that open directly onto the communal gardens, perfect for enjoying the outdoors. Additional benefits of St George's Court include visitor and resident parking, a house manager available Monday to Friday, and a 24-hour careline system in both the apartments and communal areas. Please note: The photos were taken prior to occupancy.



EPC: 77/82

Leasehold

Grants Homes 155 Station Road, Addlestone, Surrey, KT15 2AT 01932 858885 [addlestone@grantshomes.co.uk](mailto:addlestone@grantshomes.co.uk)

APPROX. GROSS INTERNAL FLOOR AREA 451 SQ FT 41.90 SQ METRES