



Crockford Park Road, Addlestone, KT15 2LQ

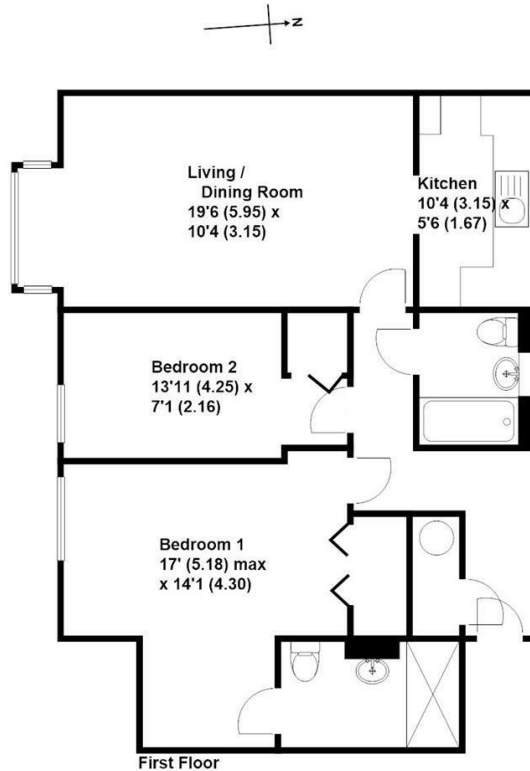




Offered to the market with no onward chain is this well presented two bedroom, two bathroom apartment in a well regarded retirement development. Situated a short level walk from the town centre, doctors and local amenities, the apartment is on the first floor, close to the lift and with views out over the patio area of the communal gardens. The property is spacious throughout with accommodation consisting of light and airy living room, fitted kitchen, bathroom, guest bedroom with built in wardrobe and a wonderful main bedroom with built in wardrobes and a great size en-suite shower room. The apartment and development communal areas are equipped with 24/7 careline's. Further benefits include attractive communal gardens, an onsite lodge manager (Mon - Fri), owners lounge, laundry, and a private pathway for quicker access to the town centre.

Leasehold





Approximate Gross Internal Floor Area - 821 sq/ft - 76 sq/mtr

Grants Independent has prepared these sales particulars for general guidance purposes only. They do not form or constitute any part of an offer or contract. The services, systems and appliances listed in these details have not been tested by us, and no guarantee is given to their operational ability or efficiency. Lease details, service charges and ground rent are given as a guide and should be checked by your solicitor prior to exchange of contracts. These plans are not drawn to scale and are for representational purposes only. Created by www.vesionwilliam.co.uk



EPC Rating: 85 B





Grants Homes 155 Station Road, Addlestone, Surrey, KT15 2AT
T: 01932 858885 E: addlestone@grantshomes.co.uk

g
GRANTS
HOMES