



Daniel Lambert Mill, Coxes Lock, Bourneside Road, Addlestone, KT15 2JX



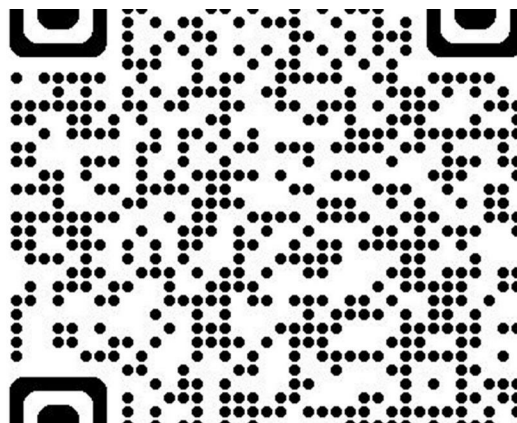


Offered to the market with no onward chain is this beautifully presented two double bedroom apartment with stunning, far reaching views over the Millpond, canal and local area.

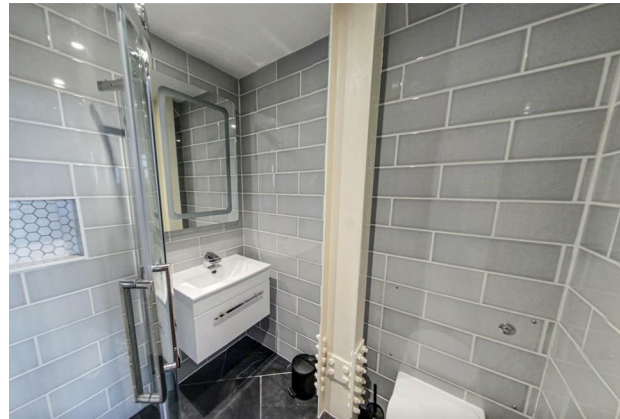
Situated on the fourth floor of this grade II listed building, at the Coxes Lock Development, this wonderful home offers contemporary styling throughout, with the stylish open plan kitchen and living room being enhanced by the beautiful natural brickwork on show. The property benefits from two double bedrooms, the first with an e-suite shower room and the second with built in wardrobe. There is a further shower room as well. Externally the balcony runs the width of the apartment and is West facing meaning it's the perfect place to unwind and watch the sunset.

The unique Coxes Lock Development is surrounded by the Mill pond and the river Wey navigation giving access to some delightful river side walks. The property also offers an exclusive residents Gym and swimming pool complex, an allocated space in the underground car park as well as residents only gated access.

Leasehold

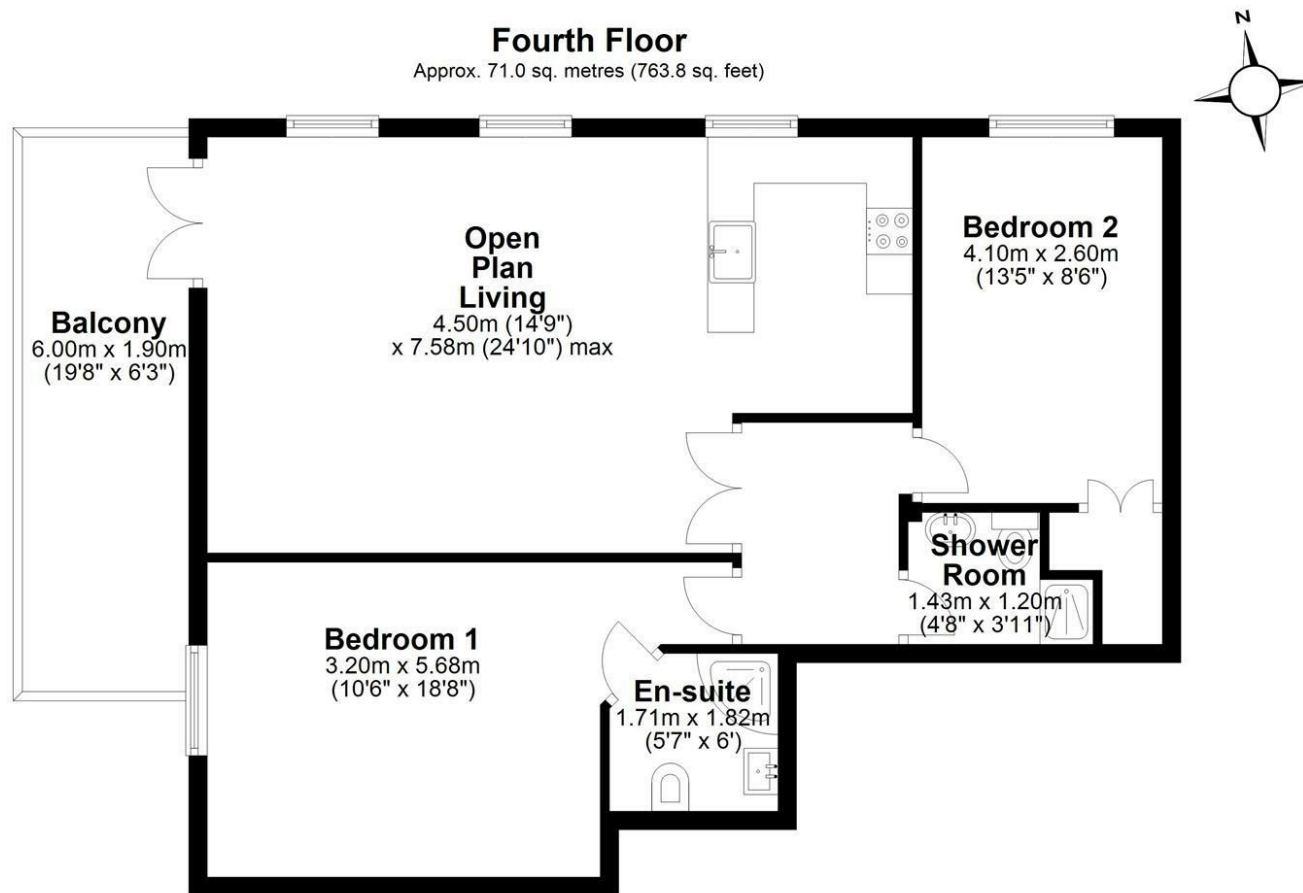






EPC: D68





Total area: approx. 71.0 sq. metres (763.8 sq. feet)

Floor Plan measurements are approximate and are for illustrative purposes only.  
Plan produced using PlanUp.

