



Hawker Drive, Addlestone, KT15 2GS





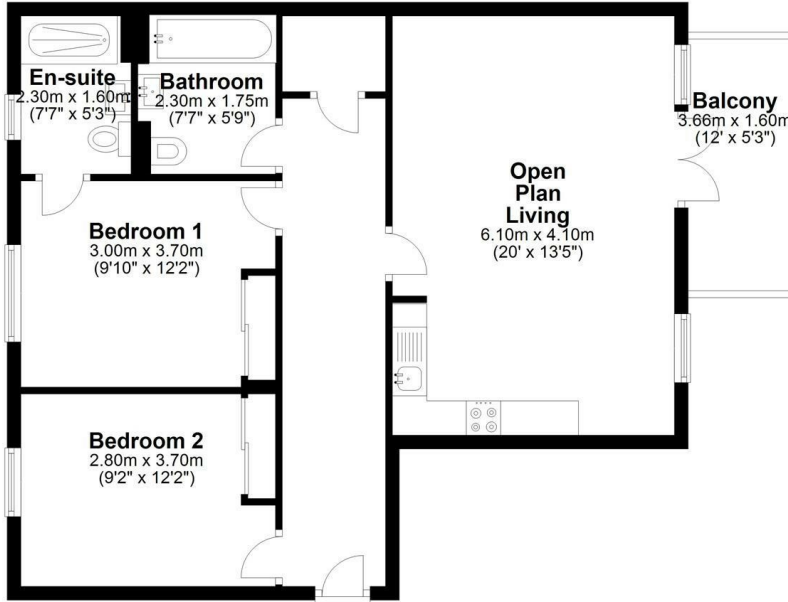
Offered to the market is this beautifully presented two double bedroom apartment with balcony and allocated parking space. Built in 2019 by Redrow Homes, this wonderful first floor property offers spacious accommodation throughout. Comprising of an open plan living area with fully fitted kitchen, lounge area with french doors out to the balcony, the main double bedroom with en suite shower room, second double bedroom and stylish family bathroom. Further benefits to the property include floor to ceiling windows letting light stream through, a long lease, communal green spaces, remainder of the NHBC guarantee and secure door entry system. Ideally situated, the property is within an easy walk of Weybridge and Addlestone town centre amenities which include a gym, cinema, supermarkets and restaurants. The railway station offers a short easy commute into London, whilst the M25 is less than 2 miles drive.

Leasehold



First Floor

Approx. 69.0 sq. metres (743.1 sq. feet)



Total area: approx. 69.0 sq. metres (743.1 sq. feet)

Floor Plan measurements are approximate and are for illustrative purposes only.
Plan produced using PlanUp.



EPC Rating: 84 B

g
GRANTS
HOMES



Grants Homes 155 Station Road, Addlestone, Surrey, KT15 2AT
T: 01932 858885 E: addlestone@grantshomes.co.uk

g
GRANTS
HOMES