

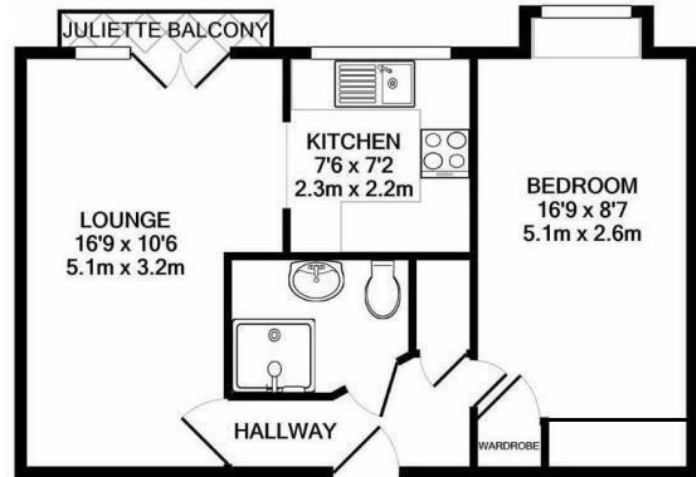


St Georges Court St. Georges Road, Addlestone, KT15 2AY



Guide Price £85,000

Available to the market with no onward chain is this well presented one bedroom first floor apartment in a popular over 55's (women) & over 60's (men) development in the heart of Addlestone. Located a short stroll from local amenities and ideally situated close to the lift, owners lounge and resident managers office, the apartment consists of a recently refitted shower room with white sanitary ware, double bedroom with built in wardrobes and kitchen, both with windows overlooking the gardens. The living room has a juliet balcony with views out over the rear communal gardens. As well as the owners lounge, further benefits of St Georges Court are visitor parking as well as residents parking, a house manager Monday to Friday and 24hr careline system in the apartments and communal areas.



Whilst every attempt has been made to ensure the accuracy of the floor plan contained here, measurements of doors, windows, rooms and any other items are approximate and no responsibility is taken for any error, omission, or mis-statement. This plan is for illustrative purposes only and should be used as such by any prospective purchaser. The services, systems and appliances shown have not been tested and no guarantee as to their operability or efficiency can be given.
Made with Metropix ©2020

EPC: 64/72

Leasehold

Grants Homes 155 Station Road, Addlestone, Surrey, KT15 2AT 01932 858885 addlestone@grantshomes.co.uk