



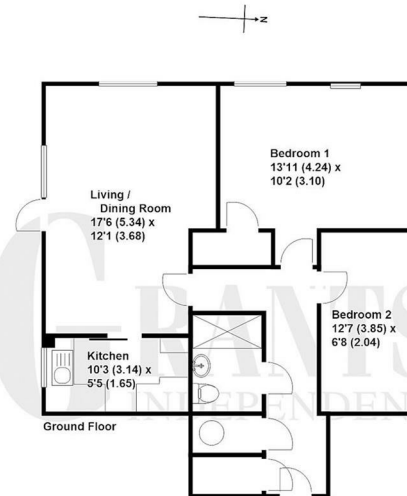
Crockford Park Road, Addlestone, KT15 2LQ





## Guide Price £195,000

Rarely available and highly sought after two bedroom ground floor retirement apartment in Cedar Court which is located close to the town centre. The apartment offers a good sized living room, refurbished kitchen, modern shower room, sizeable main bedroom as well as second guest bedroom all with alarm pull cords. Being ideally located on the ground floor next to the communal facilities, the apartment also has direct access to the wonderful communal gardens. The development benefits from a residents lounge, on site manager, attractive communal gardens, laundry room and guest suite for visitors. It is a condition of purchase that residents be over the age of 60 years.



Approximate Gross Internal Area - 676 sq/ft - 62.8 sq/mtr

Grants Independent has prepared these sales particulars for general guidance purposes only. They do not form or constitute any part of an offer or contract. The services, systems and appliances listed in these details have not been tested by us, and no guarantee is given to their operational ability or efficiency. Lease details, service charges and ground rent are given as a guide and should be checked by your solicitor prior to exchange of contracts. These plans are not drawn to scale and are for representational purposes only. Created by www.visionwillmott.co.uk

EPC: 62/68

Leasehold

Grants Homes 155 Station Road, Addlestone, Surrey, KT15 2AT 01932 858885 [addestone@grantshomes.co.uk](mailto:addestone@grantshomes.co.uk)