



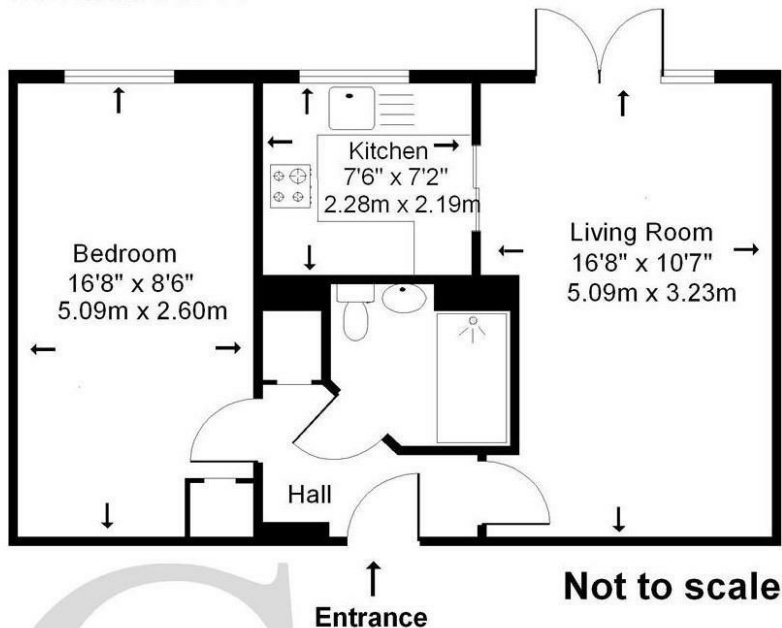
St Georges Court, St. Georges Road, Addlestone, KT15
2AY



Available to the market with no onward chain is this well presented one bedroom first floor apartment in a popular over 55's (women) & over 60's (men) development in the heart of Addlestone. Just a short stroll from local amenities and ideally situated close to the lift, owners lounge and resident managers office, the apartment consists of a fully tiled bathroom with white sanitary ware, double bedroom with built in wardrobe and kitchen, both with windows overlooking the gardens. The living room has a juliet balcony with views to the gardens. Upon completion of the sale the new owner will be provided with a new 99 year lease. As well as the owners lounge, further benefits of St Georges Court are visitor parking as well as residents parking, a house manager Monday to Friday and 24hr careline system in the apartments and communal areas. Keen to sell, vendors will listen to sensible offers!

Leasehold





Approximate Gross Internal Floor Area: 43m sq (465sq ft)

Whilst every attempt has been made to ensure the accuracy of this floor plan, room sizes and measurements are approximate and accordingly should not be relied upon for carpets and furnishings.

These plans are for representation purposes only and no responsibility can be given for errors and omissions.

INDEPENDENT

EPC Rating: 72 C



Grants Homes 155 Station Road, Addlestone, Surrey, KT15 2AT
T: 01932 858885 E: addlestone@grantshomes.co.uk

