



Witley House, Garfield Road, Addlestone, KT15 2GF



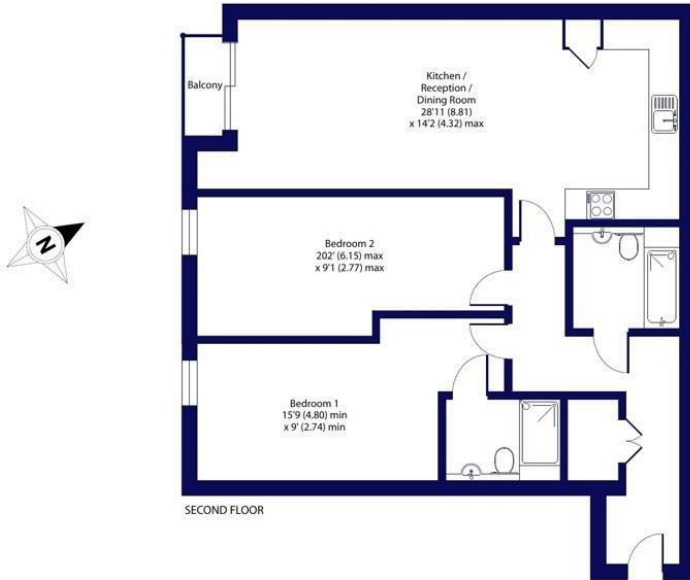
Situated in the heart of the town centre in the modern Addlestone One development is this spacious two bedroom two bathroom apartment. Offering views over the landscaped courtyard gardens, the accommodation is spacious throughout with both bedrooms being doubles with the principle having an en-suite shower room, a further family bathroom, entrance hall and lovely open plan kitchen, dining , reception room The kitchen is fully fitted with integral appliances. Further benefits to this stunning property include an allocated parking space, secure door entry systems and a long lease.

Leasehold



Approximate Area = 964 sq ft / 89.5 sq m

For identification only - Not to scale



Floor plan produced in accordance with RICS Property Measurement Standards incorporating International Property Measurement Standards (IPMS2 Residential). ©richecom 2024. Produced for Leaders Sales Ltd. REF: 1115660

EPC Rating: 81 B





Grants Homes 155 Station Road, Addlestone, Surrey, KT15 2AT
T: 01932 858885 E: addlestone@grantshomes.co.uk

