



Alexander Raby Mill, Bourneside Road, Addlestone, KT15 2JX





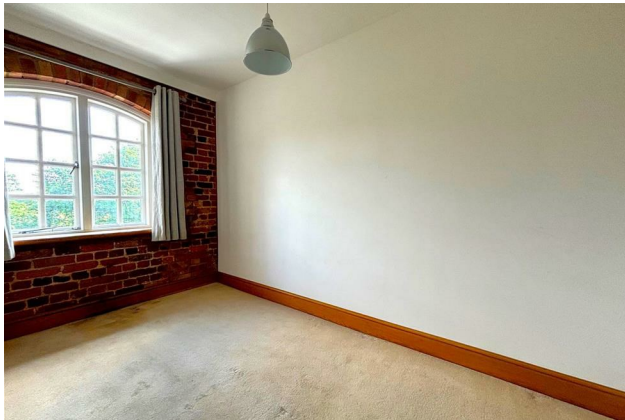
Located in this delightful converted grade II listed Mill, Grants Homes are thrilled to offer to the market this 3 bedroom duplex apartment. With stunning views over the water and local area, the property brings a real mix of character with contemporary styling.

On the entrance level there are two bedrooms, one double which has its own balcony and the other a good size single, both with views out over the water as well as a family bathroom. Stairs to the next floor lead on to a landing with doors to the large reception room with French doors onto a balcony and ample eave storage, a modern fitted kitchen with integral appliances, and the principle bedroom suite which has a walk in dressing room and en-suite wet room.

Externally the property really is quite unique surrounded by the Mill pond and the river Wey navigation giving access to some delightful river side walks. The property also offers an exclusive residents Gym and swimming pool complex, an allocated space in the underground car park as well as residents only gated access.

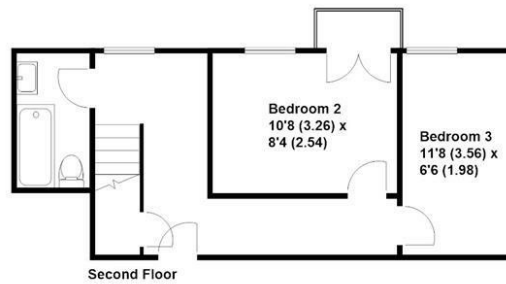
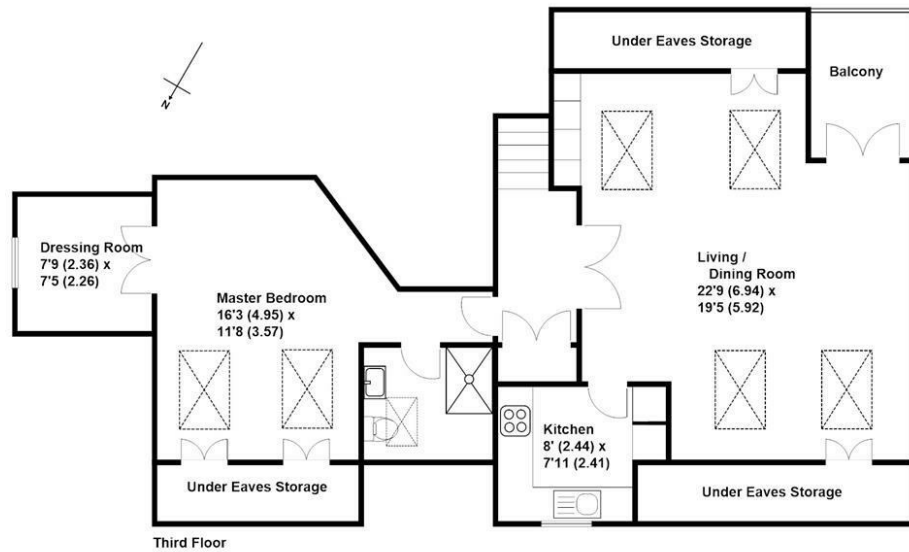
Share of Freehold





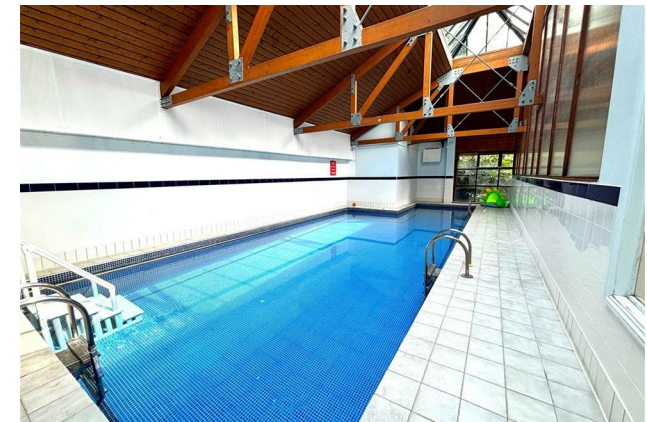
EPC: null





Approximate Gross Internal Floor Area - 1211 sq/ft - 112.5 sq/mtr

Grants Independent has prepared these sales particulars for general guidance purposes only. They do not form or constitute any part of an offer or contract. The services, systems and appliances listed in these details have not been tested by us, and no guarantee is given to their operational ability or efficiency. Lease details, service charges and ground rent are given as a guide and should be checked by your solicitor prior to exchange of contracts. These plans are not drawn to scale and are for representational purposes only. Created by www.wiseman.co.uk



Grants Homes 155 Station Road Addlestone KT15 2AT
T: 01932 858885 E: addlestone@grantshomes.co.uk

