



Alexandra Road, Addlestone, KT15 2PQ





Beautifully presented three double bedroom Victorian home with off street parking for two vehicles. Situated in a no through road close to the town centre and railway station, Weybridge town centre is also within a 20 minute walk.

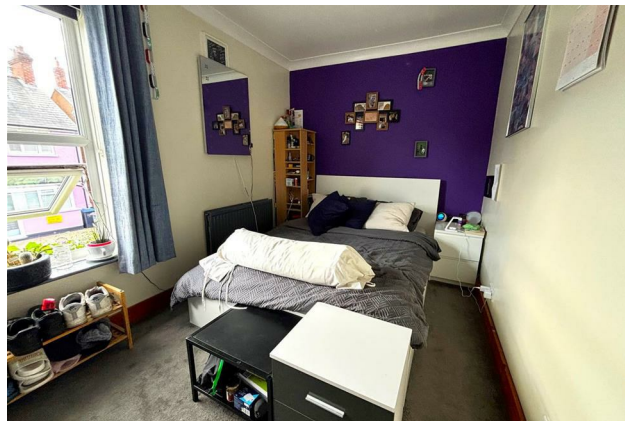
This wonderful family home has been extended to provide accommodation over three floors which on the ground floor consists of a homely front aspect sitting room with log burner, a rear aspect dining room with French doors out to a lovely courtyard area and the garden, fitted kitchen and a separate bathroom and WC.

The first floor houses a large rear aspect double bedroom and a further double front aspect bedroom and stairs then lead up to the second floor which is the main bedroom suite, with ample dressing area and en suite shower room as well as a Juliet balcony with fantastic views out over the garden and local area.

The garden to this property really is an oasis with the large courtyard area leading on to lawn with mature landscaped features and then onto the equally spacious raised patio area at the end of the garden which is perfect for entertaining on those lovely summer nights.

Freehold





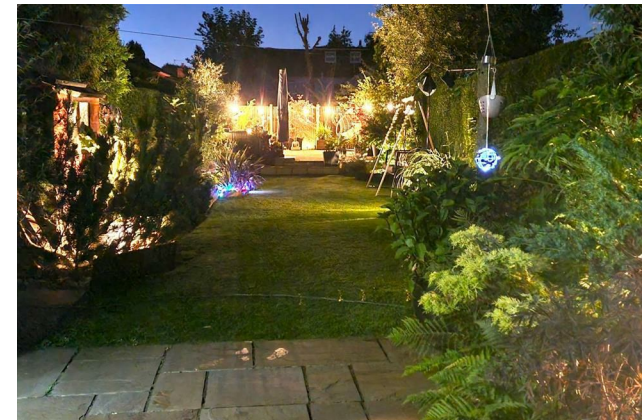
EPC: D62





Approximate Gross Internal Floor Area - 1168 sq/ft - 108.5 sq/mtr

Grants Independent has prepared these sales particulars for general guidance purposes only. They do not form or constitute any part of an offer or contract. The services, systems and appliances listed in these details have not been tested by us, and no guarantee is given to their operational ability or efficiency. Lease details, service charges and ground rent are given as a guide and should be checked by your solicitor prior to exchange of contracts. These plans are not drawn to scale and are for representational purposes only. Created by www.visionwithn.co.uk



Grants Homes 155 Station Road Addlestone KT15 2AT
 T: 01932 858885 E: addlestone@grantshomes.co.uk

