



Harrow Close, Addlestone, KT15 2GJ





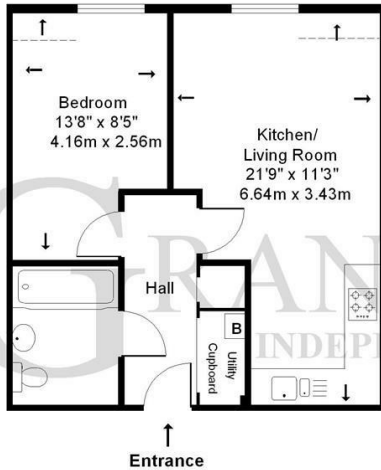
No Onward Chain. A well presented recently redecorated one bedroom top floor apartment with allocated parking space. Situated on the Addlestone / Chertsey border, the property benefits from an living/dining area which is open plan to a modern fitted kitchen. a double bedroom with views out over local parkland and a contempmporary bathroom with white suite and shower over the bath. Ideal as first time buy or as an investment property with an expected rental of £1050 pcm.



Leasehold



## Second Floor



**Not to scale**

**Approximate Gross Internal Floor Area: 42m sq (451sq ft)**

Whilst every attempt has been made to ensure the accuracy of this floor plan, room sizes and measurements are approximate and accordingly should not be relied upon for carpets and furnishings. These plans are for representation purposes only and no responsibility can be given for errors and omissions.

© Drawing Rooms 2012

EPC Rating: 78 C



Grants Homes 155 Station Road, Addlestone, Surrey, KT15 2AT  
T: 01932 858885 E: [addlestone@grantshomes.co.uk](mailto:addlestone@grantshomes.co.uk)

