



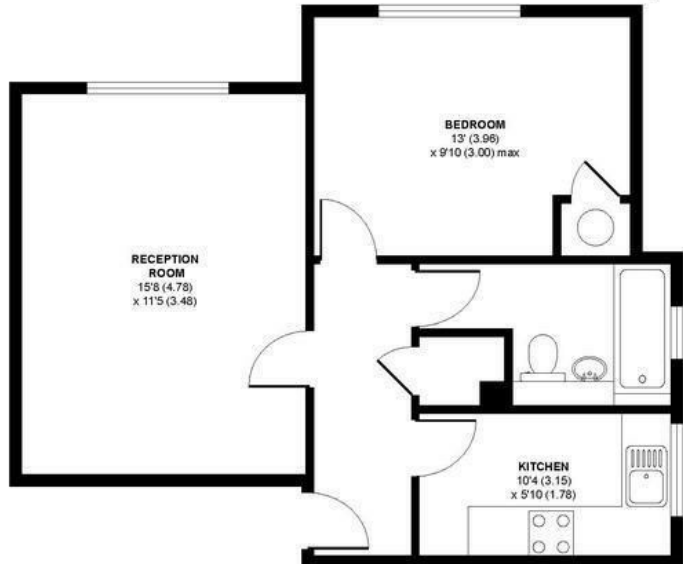
The Courtyard, High Street, Addlestone, KT15 1UQ



Guide Price £199,950

Offered to the market is this spacious one bedroom apartment situated conveniently within a very short walk of Addlestone town centre and train station. Set on the first floor of this quiet development, the accommodation consists of a fitted kitchen, good sized living room, double bedroom and bathroom. Further benefits to the property include an allocated parking space, secure door entry system, long lease and low outgoings.

TOTAL GROSS
INTERNAL FLOOR AREA
496 SQFT 46.1 SQM



EPC: 73/83

Leasehold

Grants Homes 155 Station Road, Addlestone, Surrey, KT15 2AT 01932 858885 addlestone@grantshomes.co.uk