



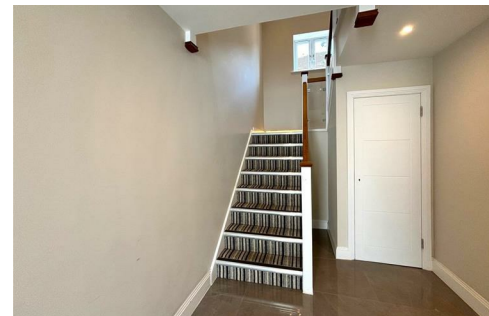
12 Woodham Lane, New Haw, KT15 3EH

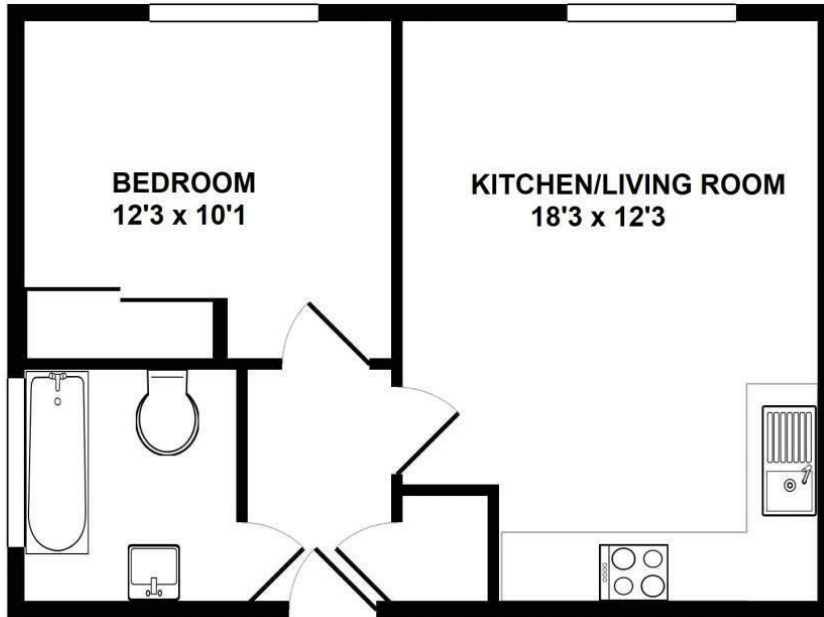




Offered to the market with no onward chain is this stunning first floor apartment close to local amenities and within walking distance of Byfleet & New Haw railway station. Built in 2019 by Boost Homes and offering an allocated parking space, this wonderful modern property offers a beautiful bathroom with shower over the bath, spacious double bedroom with fitted double wardrobe and a great size open plan kitchen living room. The kitchen is fully fitted with integral appliances. As well as a light and airy feel, further benefits include a long lease, the remainder of the new build warranty and low outgoings.

Leasehold





TOTAL APPROX. FLOOR AREA 42 SQ.M.

Whilst every attempt has been made to ensure the accuracy of the floor plan contained here, measurements of doors, windows, rooms and any other items are approximate and no responsibility is taken for any error, omission, or mis-statement. This plan is for illustrative purposes only and should be used as such by any prospective purchaser. The services, systems and appliances shown have not been tested and no guarantee as to their operability or efficiency can be given



EPC Rating: 73 C





Grants Homes 155 Station Road, Addlestone, Surrey, KT15 2AT
T: 01932 858885 E: addlestone@grantshomes.co.uk

