

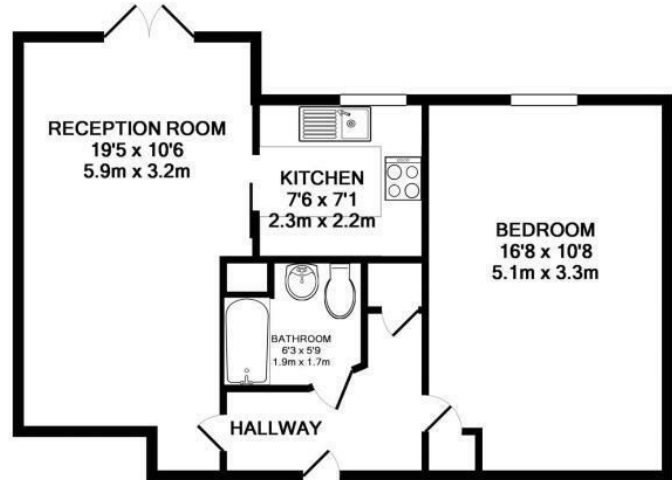


St. Georges Court, Addlestone, KT15 2AY



Guide Price £85,000

A one bedroom second floor apartment located in a well respected over 55's (women) & over 60's (men) development a short walk from the town centre and railway station. Offered to the market with no onward chain, the apartment consists of a good size shower room, double bedroom, kitchen and living room with juliet balcony looking out over the entrance to the development and Weybridge beyond. The development offers an owners lounge, visitor parking as well as residents parking, a house manager Monday to Friday and 24hr careline system in the apartments and communal areas.



TOTAL APPROX. FLOOR AREA 496 SQ.FT. (46.0 SQ.M.)

Whilst every attempt has been made to ensure the accuracy of the floor plan contained here, measurements of doors, windows, rooms and any other items are approximate and no responsibility is taken for any error, omission, or mis-statement. This plan is for illustrative purposes only and should be used as such by any prospective purchaser. The services, systems and appliances shown have not been tested and no guarantee as to their operability or efficiency can be given

Made with Metropix ©2016

EPC: 70/79

Leasehold

Grants Homes 155 Station Road, Addlestone, Surrey, KT15 2AT 01932 858885 addlestone@grantshomes.co.uk