



Victoria Road, Addlestone, KT15 2PL







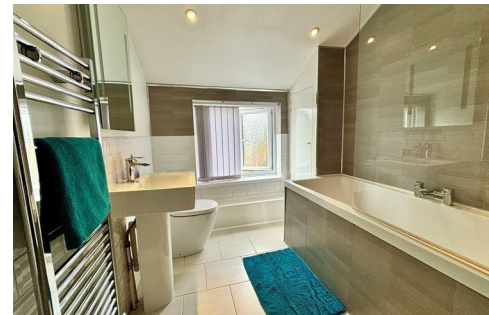
Welcome to this charming end terrace house located in a cul-de-sac close to the Train station and Town centre. This beautifully presented property boasts two reception rooms, a modern fully fitted kitchen and utility room with a WC on the ground floor.

The first floor has a front aspect double bedroom which stretches the full width of the house, a single bedroom with views out over the rear garden and a modern bathroom. On the second floor is the main bedroom which has under eaves storage and an en suite shower room.,

One of the many standout features of this property is the long garden, ideal for those who have green fingers or enjoy hosting outdoor gatherings in the warmer months. Additionally, the convenience of off-street parking ensures you never have to worry about finding a parking space after a long day.

Ideally situated for local amenities and schooling this wonderful home is also just over a mile to Weybridge town centre and within a 10 minute drive of Junction 11 on the M25.

Freehold





**Approximate Gross Internal Floor Area - 1053 sq/ft - 97.8 sq/mtr**

Grants Independent has prepared these sales particulars for general guidance purposes only. They do not form or constitute any part of an offer or contract. The services, systems and appliances listed in these details have not been tested by us, and no guarantee is given to their operational ability or efficiency. Lease details, service charges and ground rent are given as a guide and should be checked by your solicitor prior to exchange of contracts. These plans are not drawn to scale and are for representational purposes only. Created by www.visionwulfm.co.uk

**EPC Rating: 60 D**





Grants Homes 155 Station Road, Addlestone, Surrey, KT15 2AT  
T: 01932 858885 E: [addlestone@grantshomes.co.uk](mailto:addlestone@grantshomes.co.uk)

