



Pyle Close, Addlestone, KT15 2FF







Superbly presented is this wonderful four bedroom, three bathroom modern family home ideally located in the heart of Addlestone town centre. Offered to the market with no onward chain and owned from new by our vendors, this fantastic property offers two allocated parking spaces and accommodation over three floors. On the ground floor there is a welcoming entrance hall with doors leading to a ground floor WC as well as a front aspect fully fitted kitchen breakfast room with integrated appliances including oven, hob, fridge freezer, washing machine and dishwasher. A further door from the hallway leads to the good size rear aspect reception room which has plenty of room to be used as a lounge diner. There are patio doors with large windows to each side which open out on to the lawned garden with small patio area, and these let light flood in. To the first floor are the main bedroom with fitted wardrobes, balcony and en suite shower room, a good sized single bedroom and the family bathroom. On the second floor are two double bedrooms, one with balcony, and a further shower room.

Freehold

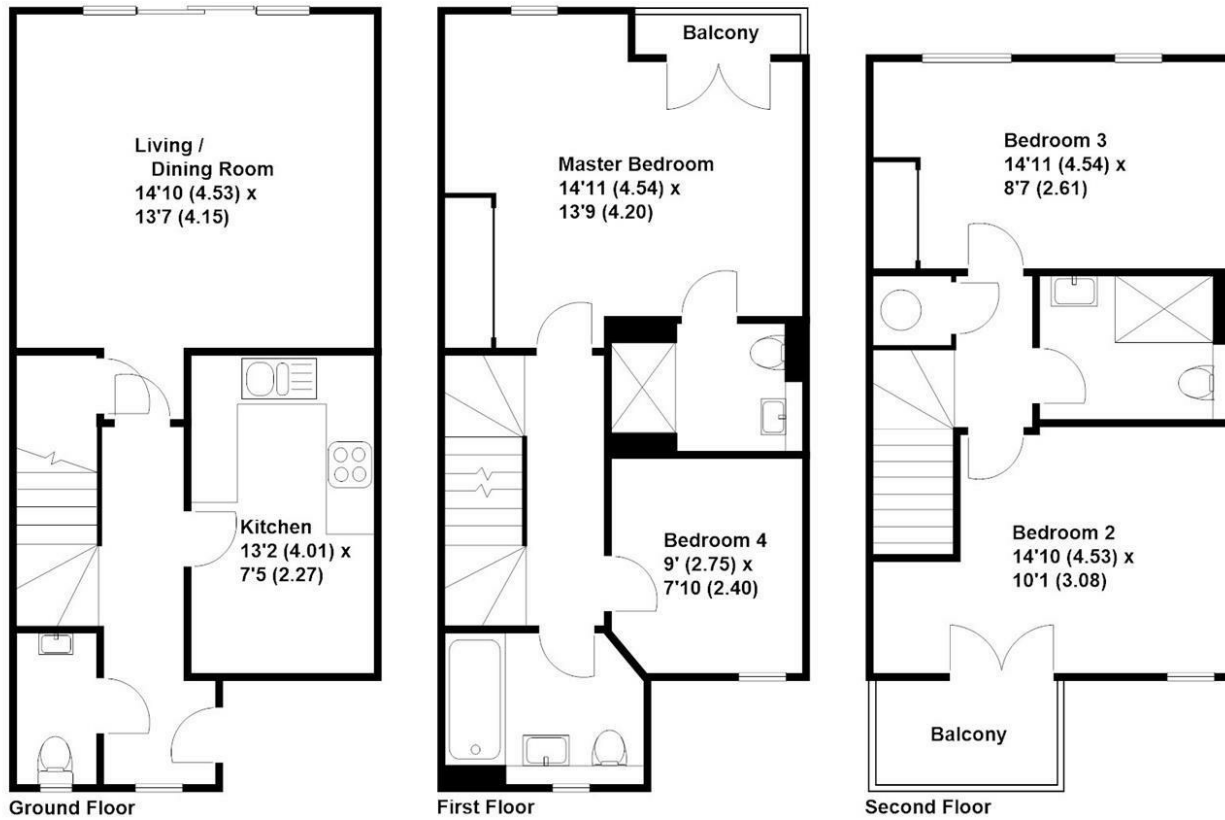




EPC: B81







**Approximate Gross Internal Floor Area - 1253 sq/ft - 116.4 sq/mtr**

Grants Independent has prepared these sales particulars for general guidance purposes only. They do not form or constitute any part of an offer or contract. The services, systems and appliances listed in these details have not been tested by us, and no guarantee is given to their operational ability or efficiency. Lease details, service charges and ground rent are given as a guide and should be checked by your solicitor prior to exchange of contracts. These plans are not drawn to scale and are for representational purposes only. Created by www.visionwithin.co.uk



Grants Homes 155 Station Road Addlestone KT15 2AT  
 T: 01932 858885 E: addlestone@grantshomes.co.uk