



Heathside Road, Woking, GU22 7LL



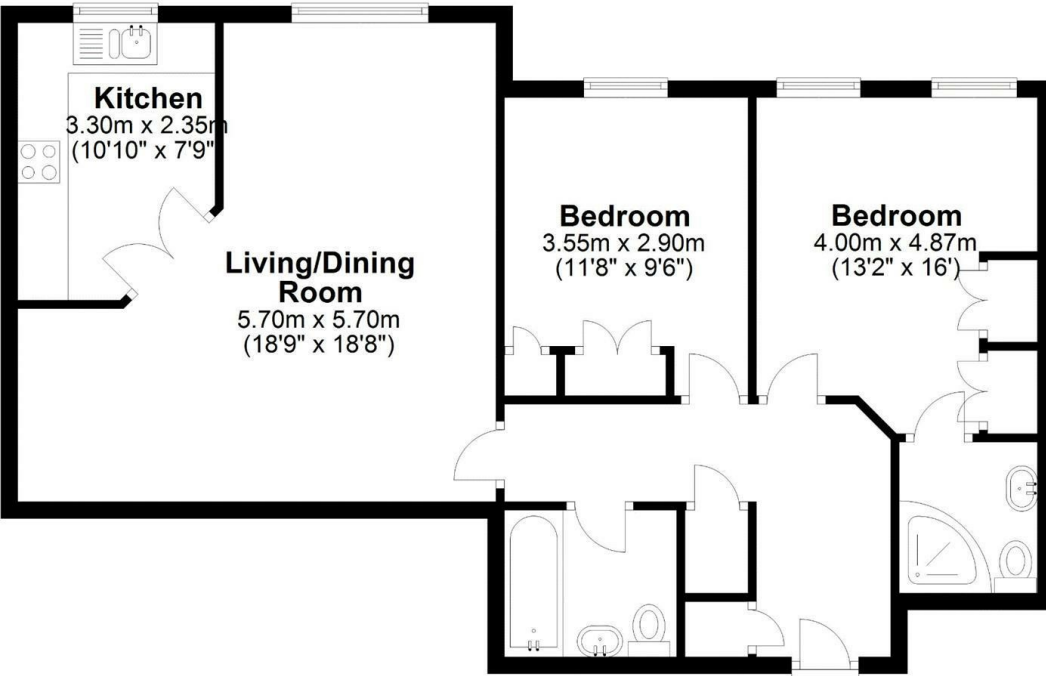


Offered to the market with no onward chain is this spacious two bedroom, two bathroom top floor apartment situated in a private, gated development in the heart of Woking town centre. The apartment comprises a large hallway with ample storage space, living room, leading onto a modern fitted kitchen including a dishwasher, master bedroom with double fitted wardrobes and ensuite shower room, second double bedroom with fitted wardrobes and bathroom with shower over bath. There is also a lift and an allocated parking space.

Leasehold



Approx. 74.0 sq. metres (796.4 sq. feet)



Total area: approx. 74.0 sq. metres (796.4 sq. feet)

EPC Rating: 77 C





Grants Homes 155 Station Road, Addlestone, Surrey, KT15 2AT  
T: 01932 858885 E: [addlestone@grantshomes.co.uk](mailto:addlestone@grantshomes.co.uk)

