



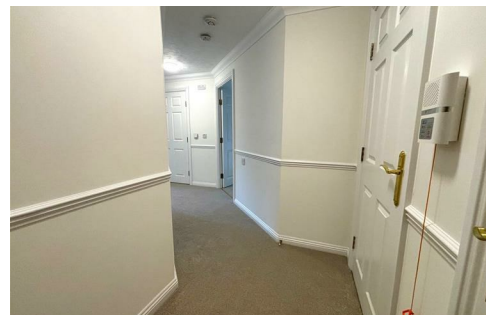
Station Road, Addlestone, KT15 2FB

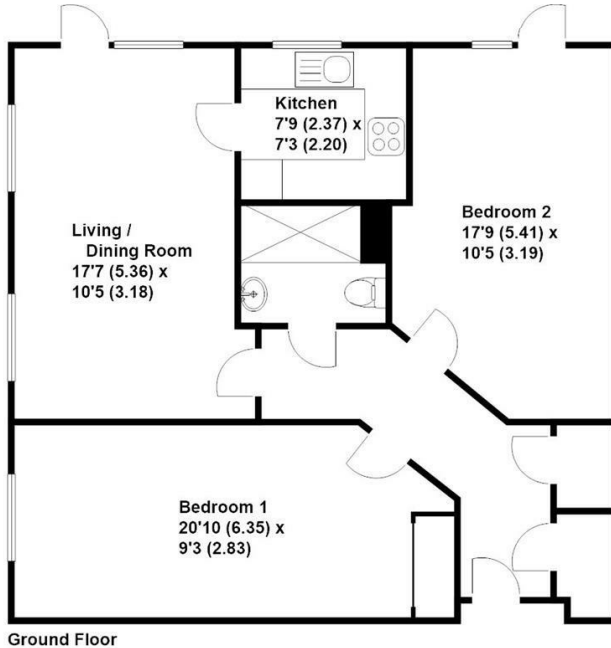




Offered to the market in stunning condition is this spacious two bedroom ground floor apartment in a popular over 60's development. Offered for the first time since original purchase, this wonderful property consists of a double aspect living room, modern fitted kitchen with integral appliances, two spacious double bedrooms both with fitted wardrobes and a contemporary shower room. Newly installed carpets and redecoration throughout has left this home 'turn key' ready for its new owner. Further benefits to this property include an owners lounge, communal laundry room and attractive gardens. Situated within an easy walk of the town centre and on bus routes to both Addlestone & Weybridge.

Leasehold





Approximate Gross Internal Floor Area - 767 sq/ft - 71.3 sq/mtr

Grants Independent has prepared these sales particulars for general guidance purposes only. They do not form or constitute any part of an offer or contract. The services, systems and appliances listed in these details have not been tested by us, and no guarantee is given to their operational ability or efficiency. Lease details, service charges and ground rent are given as a guide and should be checked by your solicitor prior to exchange of contracts. These plans are not drawn to scale and are for representational purposes only. Created by www.visionwithin.co.uk



EPC Rating: 76 C





Grants Homes 155 Station Road, Addlestone, Surrey, KT15 2AT
T: 01932 858885 E: addlestone@grantshomes.co.uk

