



Addlestone Park, Addlestone, KT15 1SU



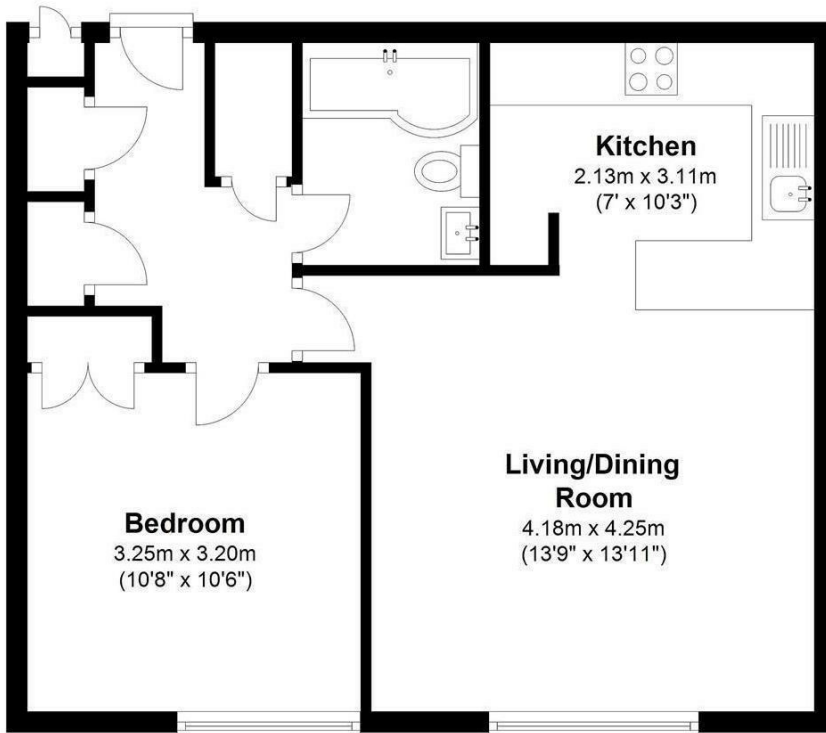


Offered with No Onward Chain is this well presented one bedroom first floor apartment, located less than half a mile from the local train station. This property has a large living room and open plan kitchen with breakfast bar. There is a double bedroom with built in wardrobe and modern bathroom. Set in a well regarded leafy development a short walk from the town centre and train station. Further benefits to the property include a long lease, communal gardens and residents only parking.

Leasehold



Approx. 48.4 sq. metres (520.9 sq. feet)



Total area: approx. 48.4 sq. metres (520.9 sq. feet)

Whilst every effort has been made to ensure the accuracy of this floor plan, we cannot be held responsible for errors, omissions and/or changes in specifications. These plans are for illustrative purposes only and should not be used for any other purpose. The actual layout and dimensions may vary from those shown on this plan.

EPC Rating: 54 E



Grants Homes 155 Station Road, Addlestone, Surrey, KT15 2AT
T: 01932 858885 E: addlestone@grantshomes.co.uk

