



Highfield Park, Rowtown, KT15 1EU

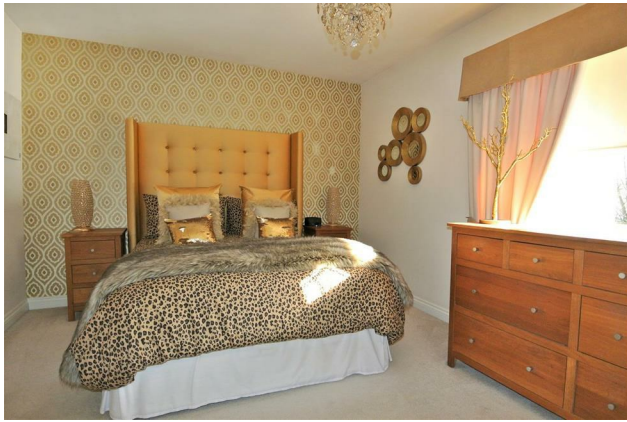




Situated in private development of just 8 executive homes is this wonderfully presented and spacious five bedroom detached property. Built in 2013 and offering just under 2000 sq ft of accommodation, this superb family home's ground floor consists of a large fitted kitchen with integral appliances, utility room, cloakroom, study/family room, dining area which is open plan to the rear aspect living room with french doors out on to the patio and garden area. Stairs to the first floor lead to a landing with doors to the principle bedroom with fitted wardrobes and en-suite, three further double bedrooms all with wardrobes and a good size family bathroom. Stairs to the second floor lead to another double bedroom and a storage area. Externally there is a great size two tier rear garden with a large patio area for entertaining on the lower tier and a long turfed garden with mature borders on the upper tier. To the side there is further garden space which leads to a covered sitting area. To the front is a lawn area as well as parking and garage with up and over door.

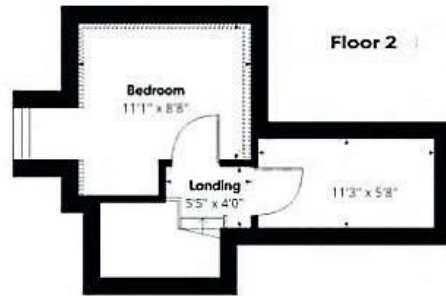
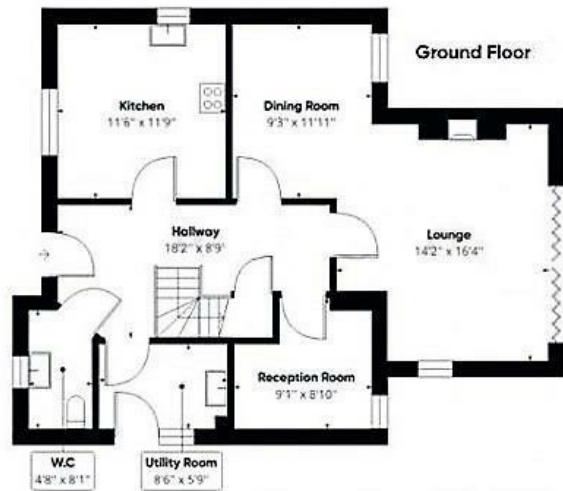
Freehold





EPC: B85





Approximate total area:  
1996 sq ft / 185.43 sq m

