



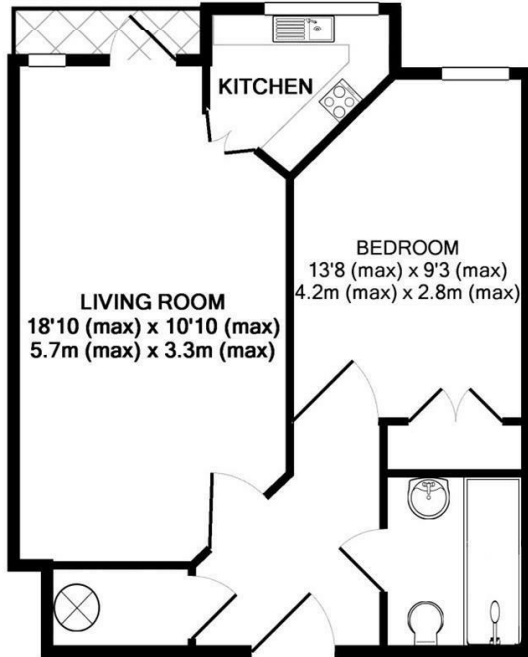
Mead Court, Station Road, Addlestone, KT15 2PR





Offered to the market with no onward chain is this First Floor one bedroom apartment in an exclusive over 55's development. The apartment consists of a large double bedroom with built in mirror fronted double wardrobe, modern bathroom, good size reception room with doors to the modern fully fitted kitchen with integral appliances including waist height oven, halogen hob, fridge and freezer. A further patio door leads out to a private balcony. Each of the rooms in the apartment are equipped with 24 hour care line pull cords, as are the communal areas on the development. These areas include the landscaped gardens, owners lounge, laundry and guest suite. There is also parking at the development.

Leasehold



Whilst every attempt has been made to ensure the accuracy of the floor plan contained here, measurements of doors, windows, rooms and any other items are approximate and no responsibility is taken for any error, omission, or mis-statement. This plan is for illustrative purposes only and should be used as such by any prospective purchaser. The services, systems and appliances shown have not been tested and no guarantee as to their operability or efficiency can be given

EPC Rating: 73 C





Grants Homes 155 Station Road, Addlestone, Surrey, KT15 2AT  
T: 01932 858885 E: [addlestone@grantshomes.co.uk](mailto:addlestone@grantshomes.co.uk)

