

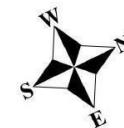
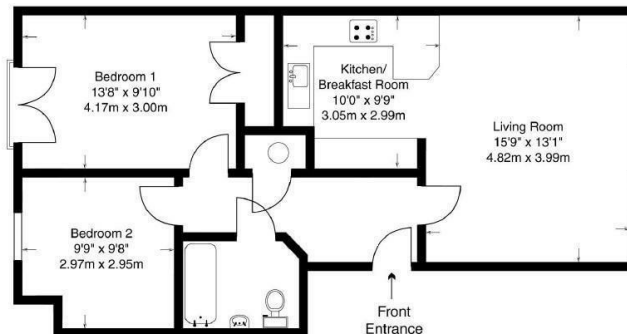


Pond House, Abbey Road, Chertsey, KT16 8AL



Offers In Excess Of £300,000

Pond House is located in a highly desirable residential area close to the centre of Chertsey, moments from the railway station and all local amenities. This superb spacious two bedroom luxury apartment. has accommodation comprising of a generous lounge/dining room which is open plan to a fitted kitchen with integral appliances, contemporary bathroom and two spacious bedrooms, with fitted wardrobes to the master. Further benefits include security entry phone, allocated residents & visitors parking.



This diagram has been produced by Sedlacek Design for Grants to the following specification:
 1. Internal measurements only are taken and measurements in each room are within +/- 3 inches and should be checked before any important decisions are made upon them.
 2. Baths, toilets, showers etc. are visuals only as style and shape may differ to actual fitment. Windows are measured internally.
 3. Sedlacek Design will not be held responsible for any errors or omissions
 4. This floorplan is only a illustration, do not scale.
 5. Copyright 2005, Sedlacek Design 07753 635053. Reproduced by Grants. only. All Rights Reserved.

Approx. Gross Internal
 Floorplan Area:
 699 Square Feet
 65 Square Metres

EPC: 82/88

Leasehold

Grants Homes 155 Station Road, Addlestone, Surrey, KT15 2AT 01932 858885 addlestone@grantshomes.co.uk