



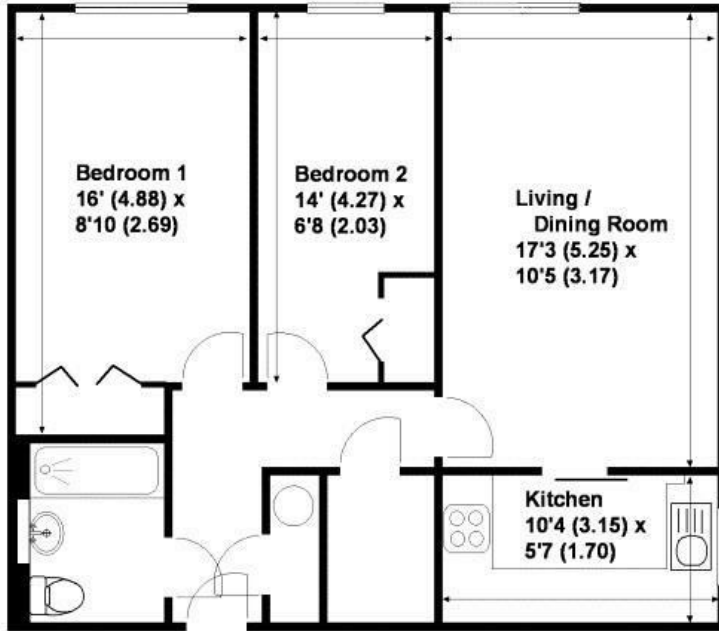
Cedar Court, Crockford Park Road, Addlestone, KT15 2LO



Offered with no onward chain is this two bedroom apartment in a popular development for the over 60's. Within a short level walk of the town centre, doctors and public transport, the apartment is located on the first floor (lift and stair access). The two bedrooms have fitted wardrobes with further storage available and further storage is provided via a large walk in cupboard off the hallway. The dual aspect living room is a good size with a bay window overlooking the superb grounds and opens to the modern kitchen which has integrated double oven and hob. The bathroom has been upgraded from the original to a modern shower room. Each apartment has a 24 hour emergency Appello call system. The development has owners facilities including a lounge, laundry and lodge manager on site Mon - Fri.

Leasehold





Approximate Gross Internal Floor Area - 613 sq/ft - 57 sq/mtr

EPC Rating: 82 B







Grants Homes 155 Station Road, Addlestone, Surrey, KT15 2AT  
T: 01932 858885 E: [addlestone@grantshomes.co.uk](mailto:addlestone@grantshomes.co.uk)

