



Cedar Court, Crockford Park Road, Addlestone, KT15 2LO



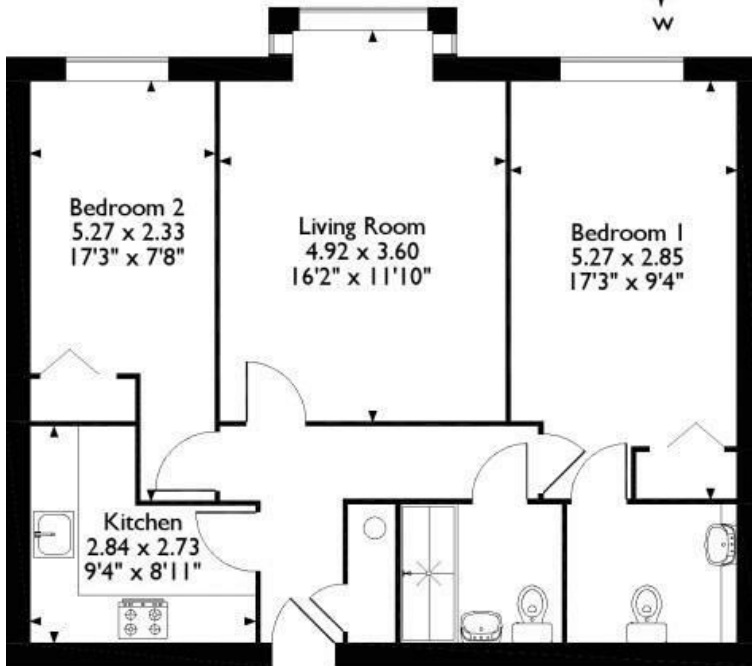
Offered to the market with no onward chain is this well presented Two Bedroom First Floor Apartment in a popular retirement development. Situated a short walk from the town centre and in pretty, well kept communal gardens, the apartment comprises a good sized living room, kitchen, modern shower room and two good sized bedrooms, one with a separate WC and built in wardrobes. Of further benefit is a 122 year lease.

The development has owners facilities including a lounge, laundry and lodge manager on site Mon - Fri.
NB, Images are pre-tenancy.

Leasehold



Approximate Gross Internal Area
64 Sq M/690 Sq Ft



First Floor Flat



EPC Rating: 83 B





Grants Homes 155 Station Road, Addlestone, Surrey, KT15 2AT
T: 01932 858885 E: addlestone@grantshomes.co.uk

