



St. Georges Road, Addlestone, KT15 2AY



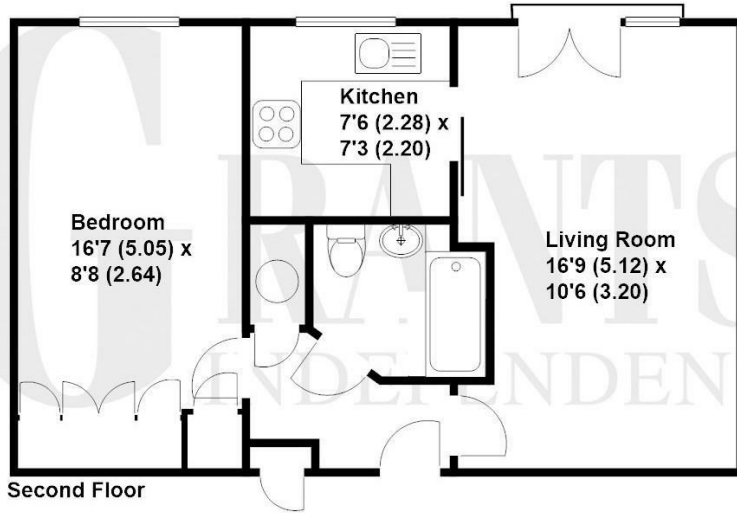


Offered to the market with no onward chain is this light and airy one bedroom apartment set in an over 55's (women) & over 60's (men) development a short stroll from the town centre. Situated on the second floor, accessed by a recently installed lift, the property consists of a good size double bedroom, tiled bathroom with white suite, living room with juliet balcony and kitchen. The development benefits from communal gardens, owners lounge and a lodge manager who is on duty Mon - Fri and 24hr careline system in the apartments and communal areas.

Leasehold







**Approximate Gross Internal Floor Area - 457 sq/ft - 42.5 sq/mtr**

Grants Independent has prepared these sales particulars for general guidance purposes only. They do not form or constitute any part of an offer or contract. The services, systems and appliances listed in these details have not been tested by us, and no guarantee is given to their operational ability or efficiency. Lease details, service charges and ground rent are given as a guide and should be checked by your solicitor prior to exchange of contracts. These plans are not drawn to scale and are for representational purposes only. Created by [www.visionwithin.co.uk](http://www.visionwithin.co.uk)

**EPC Rating: 73 C**



Grants Homes 155 Station Road, Addlestone, Surrey, KT15 2AT  
T: 01932 858885 E: [addlestone@grantshomes.co.uk](mailto:addlestone@grantshomes.co.uk)

