



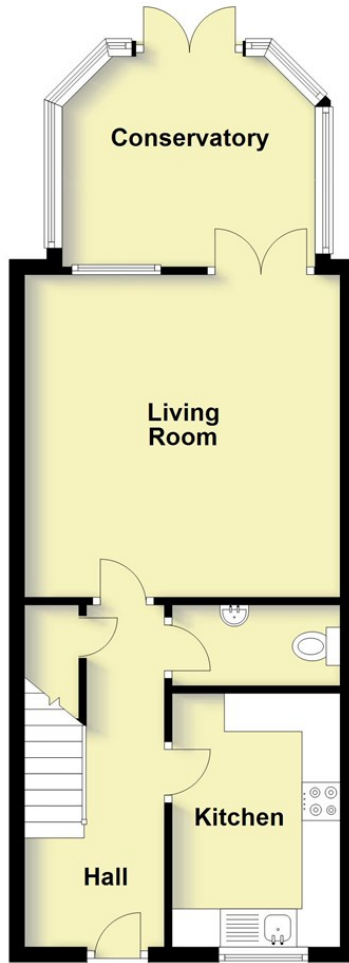
2 Bed  
House - End Terrace  
located in Hatton  
Park

£1,100 PCM

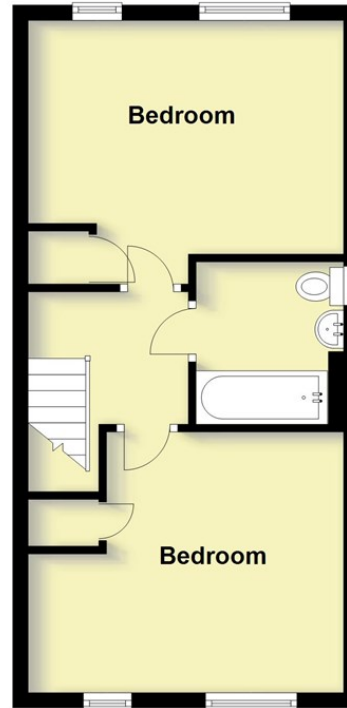


  
**MARGETTS**  
ESTABLISHED 1806

**Ground Floor**  
Approx. 45.4 sq. metres (489.1 sq. feet)

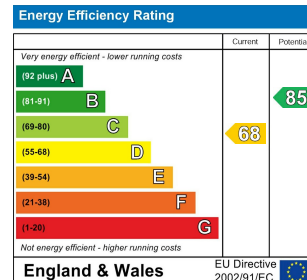


**First Floor**  
Approx. 36.4 sq. metres (391.8 sq. feet)



Total area: approx. 81.8 sq. metres (880.9 sq. feet)

This plan is for illustration purposes only and should not be relied upon as a statement of fact



**DIRECTIONS**

**CONTACT**

12 High Street  
Warwick  
Warwickshire  
CV34 4AP

E: [lettings@margetts.co.uk](mailto:lettings@margetts.co.uk)  
T: 01926 496262  
[www.margetts.co.uk](http://www.margetts.co.uk)

