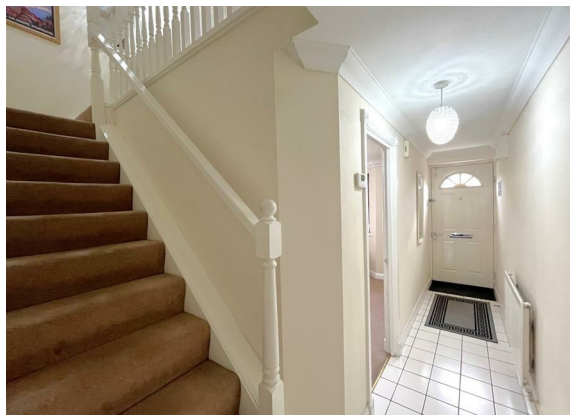




3 Bed
House - Mid Terrace
located in

£1,375 PCM




MARGETTS
ESTABLISHED 1806

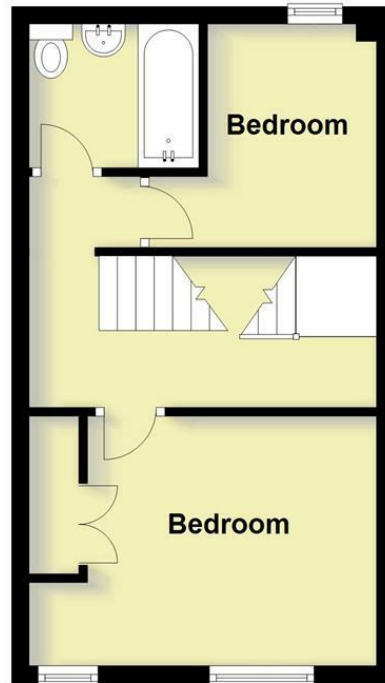
Ground Floor

Approx. 36.1 sq. metres (388.4 sq. feet)



First Floor

Approx. 29.5 sq. metres (317.7 sq. feet)



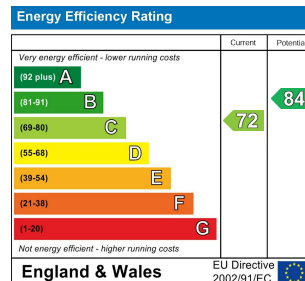
Second Floor

Approx. 29.5 sq. metres (317.7 sq. feet)



Total area: approx. 95.1 sq. metres (1023.9 sq. feet)

This plan is for illustration purposes only and should not be relied upon as a statement of fact



DIRECTIONS

CONTACT

12 High Street
Warwick
Warwickshire
CV34 4AP

E: lettings@margetts.co.uk
T: 01926 496262
www.margetts.co.uk



MARGETTS
ESTABLISHED 1806