



**4 Bed
House
located in Hatton**

Four Winds Hockley Road
Hatton
Warwick
CV35 7HQ


MARGETTS
ESTABLISHED 1806

Price Guide £900,000

Four Winds Hockley Road
Hatton
Warwick
CV35 7HQ



Price Guide £900,000

A rare and exciting opportunity to acquire a substantial, extended, four bedroom, detached home occupying a substantial plot (0.59 Acres of thereabouts) providing excellent family size gardens with the benefit of a swimming pool and garaging for three cars. Viewing highly recommended.

ENTRANCE

Front door with double glazed side panel opens into the

CHARMING RECEPTION HALL

with radiator, double glazed window, door opening to a large cloaks cupboard and beautiful wooden staircase with glass inserts leading up to the open plan first floor sitting room.

LINKED OPEN PLAN FITTED KITCHEN AND LOUNGE

BREAKFAST KITCHEN

21'3" x 11'2"

with work surfacing having matching up stands and inset four ring Bosch induction electric hob, one and a quarter bowl sink with integrated drainer and mixer tap. Comprehensive range of base units with drawers units and eyelevel wall cupboards above incorporating the Bosch cooker hood. Integrated Bosch full-size dishwasher, further range of tall larder cupboards incorporating the Bosch steam oven, Bosch microwave and conventional oven, Bosch oven and grill and further Bosch electric oven. Floor mounted oil fire central heating boiler, door to the side, and two double glazed leaded light windows.

LOUNGE

25'0" x 10'10"

with contemporary tall radiator, wood effect flooring, double glazed patio doors opening on to the rear patio and garden.

DINING ROOM/BEDROOM FOUR

11'11" x 10'11"

Believed to be formally used as a dining room but presently used as bedroom four, with radiator and double window.

UTILITY ROOM

14'7" x 7'8"

with wooden Butcher block style work surfacing incorporating a single Belfast sink with mixer tap and drawers and cupboard beneath, space for tumble dryer and space and plumbing for washing machine. Double door eyelevel wall cupboard, heated towel rail, airing cupboard housing the hot water cylinder. Door to garage.

GROUND FLOOR SHOWER ROOM

has been beautifully reappointed with a large double walk-in shower cubicle with rain shower and handheld adjustable shower attachment, wash hand basin with cupboard beneath, low level WC, shaver point, tiled floor with matching skirtings, heated towel rail, twin obscured double glazed windows.



MASTER BEDROOM SUITE

BEDROOM AREA

14'7" max x 14'3" max incl. wardrobes with double glazed window overlooking the swimming pool and garden, radiator, coved ceiling, and the dimensions include a six door range of fitted wardrobes, archway through to the inner hallway with a four-door further range of fitted wardrobes and sliding patio doors giving access to the patio garden and swimming pool.

BATHROOM

has a modern white suite with antique style tub bath, with mixer tap and hand held attachment, his and her wash hand basin with mixer taps and drawers beneath, low level WC, heated towel rail, downlights, tiled walls and floor and electric underfloor heating system.

First Floor





STUNNING FIRST FLOOR SITTING ROOM

25'1" max x 13'10" max reducing to 13'6"

This amazing room has double glazed French doors with matching side windows affording most attractive views across the swimming pool and garden, further double glazed windows and fitted log burning stove. Access to under eaves storage. Access to small loft.

BEDROOM TWO

14'7" x 11'2" excl wardrobes

(These measurements are partly under the eaves) with radiator, double glazed window, under eaves storage, access to the roof space, fitted range of wardrobes and sink with mixer tap and cupboard beneath. Access to small loft.



ENSUITE SHOWER ROOM

with fully tiled shower cubicle, low level WC, wiring for two wall lights, heater rail, and double glazed windows.

BEDROOM THREE

12'6" x 11'4" (partly under eaves)

with double glazed window, radiator and the dimensions exclude a full height range of fitted mirrored wardrobes. Under eaves storage. Access to small loft.

OUTSIDE

The property sits amidst a delightful plot extending to??? acres and enjoys extensive lawned areas with borders stocked with shrubs and plants. There is an extensive patio area adjoining the property and further patio area by the swimming pool, summer house/changing room.



DRIVEWAY

provides extensive parking and gives access to a

DETACHED SINGLE GARAGE

DOUBLE GARAGE

17'8" x 16'6" max

with electric light, power and personal door back into the utility room.

GENERAL INFORMATION

We understand all mains services are connected except gas.

The property enjoys oil fired central heating.

The oil tank is located at the front of the property.

We understand the property to be freehold.

Viewings are strictly by prior appointment through the agents.





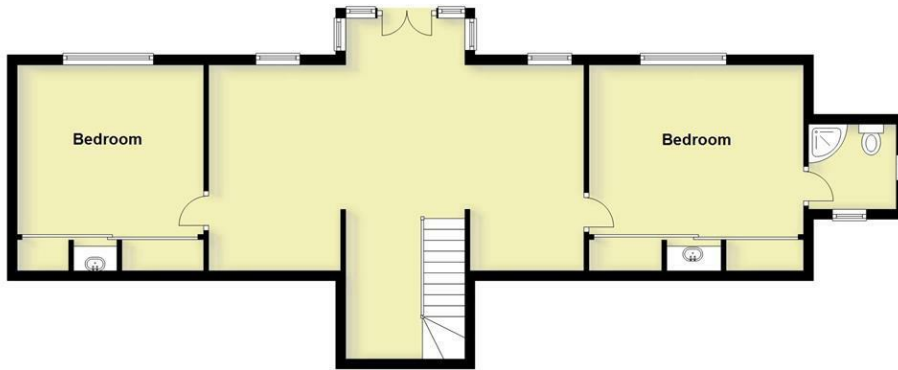
Four Winds Hockley Road, Hatton, Warwick, CV35 7HQ



Ground Floor
Approx. 154.1 sq. metres (1658.3 sq. feet)



First Floor
Approx. 76.4 sq. metres (821.8 sq. feet)



Total area: approx. 230.4 sq. metres (2480.1 sq. feet)

This plan is for illustration purposes only and should not be relied upon as a statement of fact.

Total area does not include the Single Garage

Energy Efficiency Rating		Current	Potential
<i>Very energy efficient - lower running costs</i>			
(92 plus) A			83
(81-91) B			
(69-80) C			
(55-68) D			
(39-54) E		41	
(21-38) F			
(1-20) G			
<i>Not energy efficient - higher running costs</i>			
England & Wales		EU Directive 2002/91/EC	

CONTACT

12 High Street
Warwick
Warwickshire
CV34 4AP

E: lettings@margetts.co.uk

T: 01926 496262

www.margetts.co.uk

