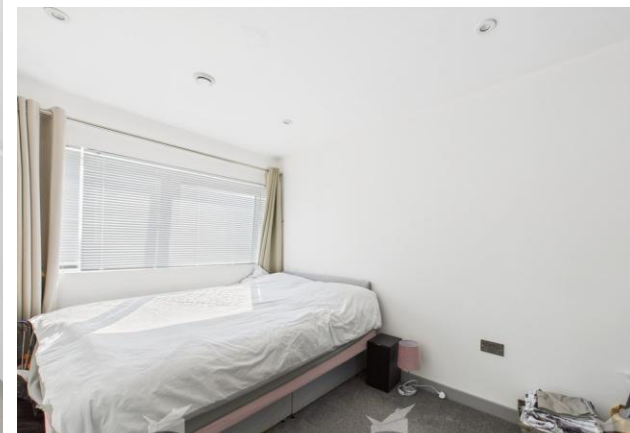


LET



Consort House, Waterdale


MARTIN&CO



Consort House, Waterdale

Flat,
1 bedroom, 1 bathroom

Date available: 8th April 2025

Deposit:

Unfurnished

Council Tax band: A

- One Bedroom.
- Modern Kitchen.
- Modern Bathroom.
- Fully Refurbished.
- Close to City Centre.
- Close to Local Amenities.
- Excellent Transport Links.

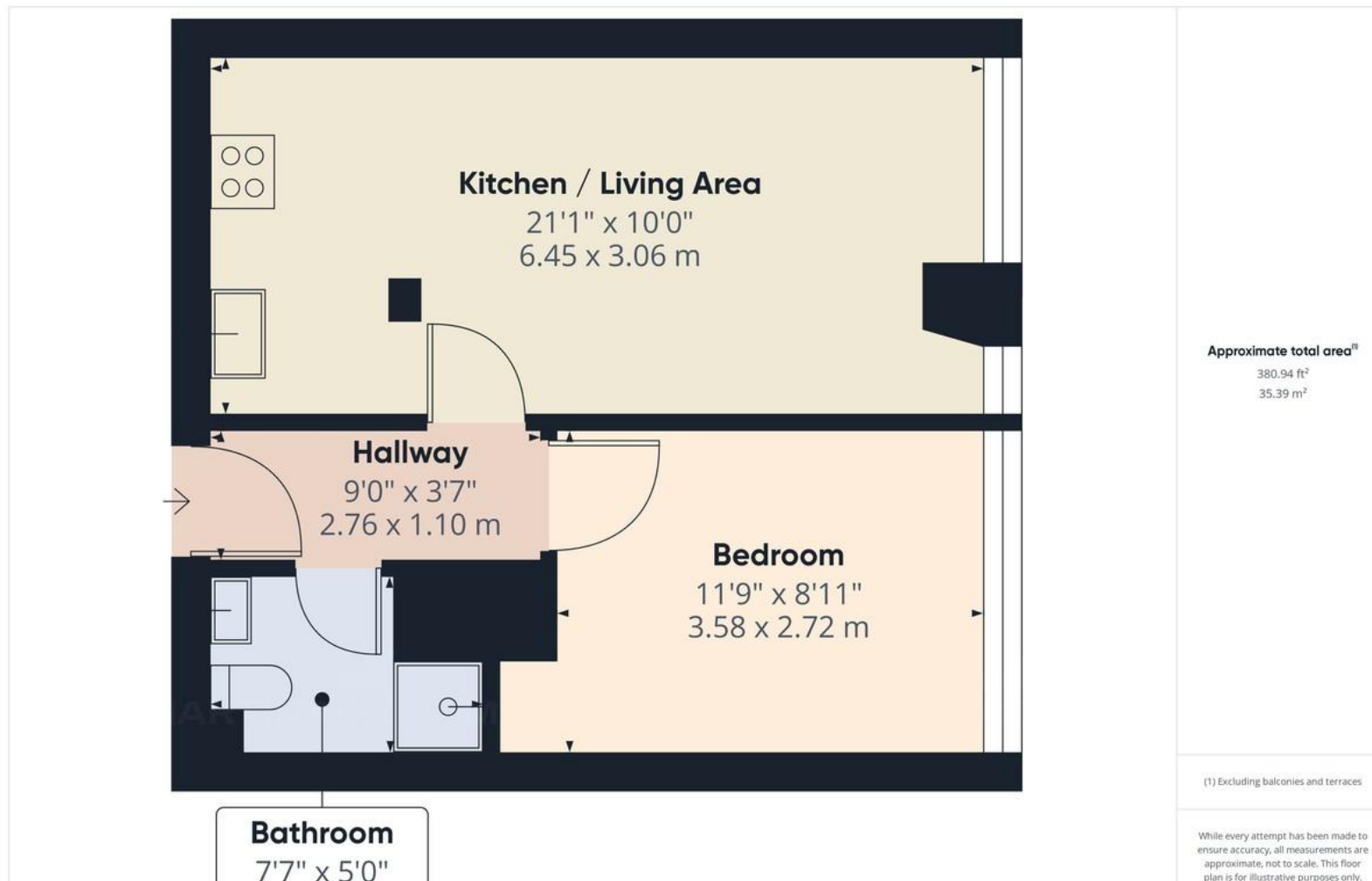
Martin and Co are pleased to present a newly refurbished one bedroom studio apartment located in the City Centre. Briefly comprising of a Kitchen/Living Area, Bedroom and Bathroom. Call now to arrange a viewing!

KITCHEN/LIVING AREA 21' 1" x 10' 0" (6.43m x 3.05m) With a range of light grey wall and base units, complimented with wood effect worktops. Also benefits from an induction hob, oven and extractor fan.

BEDROOM 11' 9" x 8' 11" (3.58m x 2.72m) A double bedroom neutrally decorated with white walls and grey carpet.

BATHROOM 7' 7" x 5' 0" (2.31m x 1.52m) A modern bathroom fitted with white piece suite and separate shower unit.

%epcGraph_c_1_544%



Martin & Co Doncaster

38 Hall Gate • Doncaster • DN1 3NR
T: 01302 343 494 • E: doncaster@martinco.com

01302 343 494

<http://www.martinco.com>



Accuracy: References to the Tenure of a Property are based on information supplied by the Seller. The Agent has not had sight of the title documents. A Buyer is advised to obtain verification from their Solicitor. Items shown in photographs including but not limited to carpets, fixtures and fittings are not included unless specifically mentioned within the sales particulars. They may however be available by separate negotiation. Buyers must check the availability of any property and make an appointment to view before embarking on any journey to see a property. No person in the employment of the agent has any authority to make any representation about the property, and accordingly any information given is entirely without responsibility on the part of the agents, sellers(s) or lessors(s). Any property particulars are not an offer or contract, nor form part of one. **Sonic / Laser Tape:** Measurements taken using a sonic / laser tape measure may be subject to a small margin of error. **All Measurements:** All Measurements are Approximate. **Services Not tested:** The Agent has not tested any apparatus, equipment, fixtures and fittings or services and so cannot verify that they are in working order or fit for the purpose. A Buyer is advised to obtain verification from their Solicitor or Surveyor.