

TO LET



Park Road , Doncaster
£700 pcm


MARTIN & CO



Park Road , Doncaster

Mid Terraced House,
2 bedroom, 1 bathroom

£700 pcm

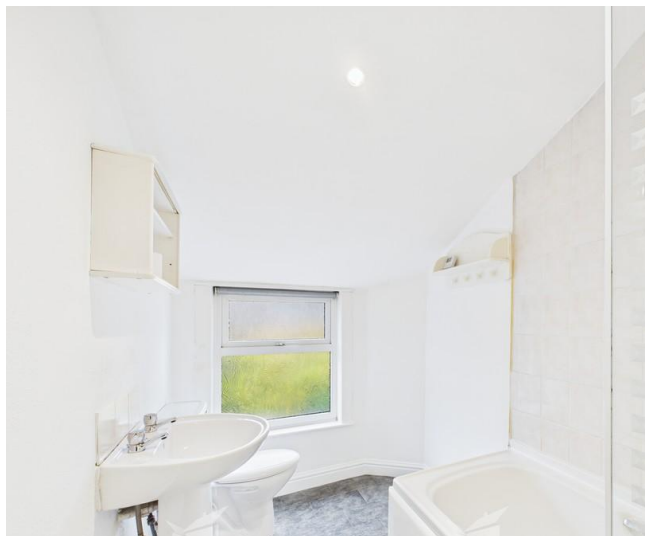
Date available: 17th November 2025

Deposit: £807.69

Unfurnished

Council Tax band: A

- Two Double Bedrooms
- Lounge & Separate Dining Room
- Fitted Kitchen
- Good Sized Bathroom With White Suite
- Walking Distance To Town Centre
- Basement ideal for Storage.
- New Carpets.



A well proportioned newly re-decorated two double bedroom mid terrace house situated in the heart of Doncaster Town Centre ideally located for shops, public houses and restaurants.

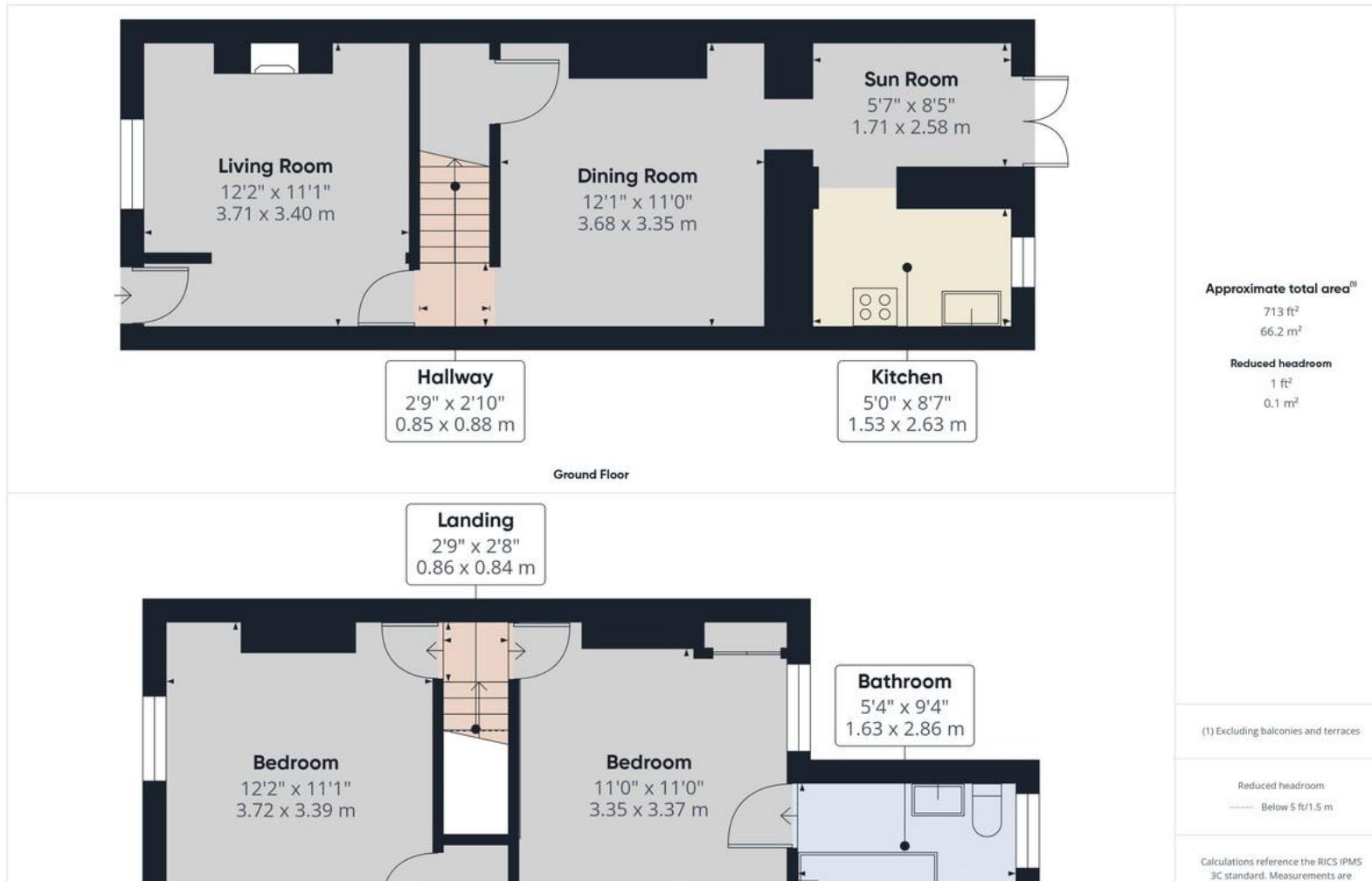
The accommodation comprises entrance lobby, front aspect lounge with fireplace, separate dining room, cellar, separate sun room and fitted kitchen to the ground floor. Two double bedrooms and bathroom with shower over.

Exterior

Having a front fore garden and to the rear an enclosed garden with paved patio area.



%epcGraph_c_1_544%



Martin & Co Doncaster

38 Hall Gate • Doncaster • DN1 3NR
 T: 01302 343 494 • E: doncaster@martinco.com

01302 343 494

<http://www.martinco.com>



Accuracy: References to the Tenure of a Property are based on information supplied by the Seller. The Agent has not had sight of the title documents. A Buyer is advised to obtain verification from their Solicitor. Items shown in photographs including but not limited to carpets, fixtures and fittings are not included unless specifically mentioned within the sales particulars. They may however be available by separate negotiation. Buyers must check the availability of any property and make an appointment to view before embarking on any journey to see a property. No person in the employment of the agent has any authority to make any representation about the property, and accordingly any information given is entirely without responsibility on the part of the agents, sellers(s) or lessors(s). Any property particulars are not an offer or contract, nor form part of one. **Sonic / Laser Tape:** Measurements taken using a sonic / laser tape measure may be subject to a small margin of error. **All Measurements:** All Measurements are Approximate. **Services Not tested:** The Agent has not tested any apparatus, equipment, fixtures and fittings or services and so cannot verify that they are in working order or fit for the purpose. A Buyer is advised to obtain verification from their Solicitor or Surveyor.