

**WITHDRAWN**



**Harrington Street , Doncaster**  
**£700 pcm**

**MARTIN&CO**



## Harrington Street , Doncaster

Mid Terraced House,  
2 bedroom, 1 bathroom

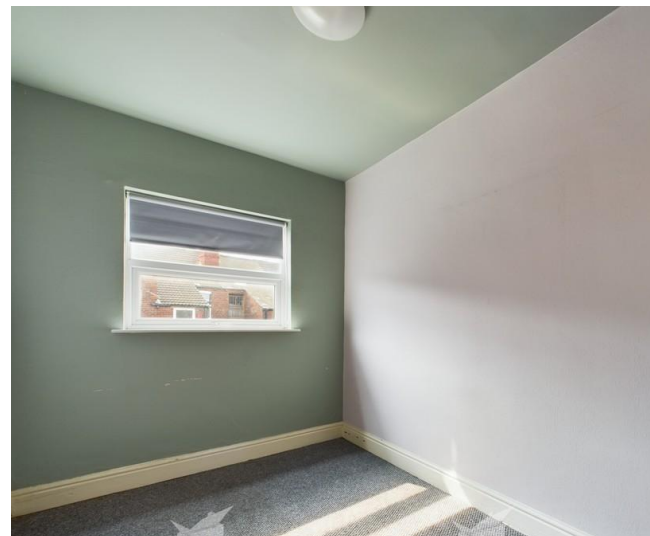
£700 pcm

Date available: Available Now

Deposit: £807.69

Council Tax band:

- Two Bedrooms.
- Mid-Terraced.
- On Road Parking.
- Rear Garden.
- Town Centre Location.
- Close to Local Amenities.
- Excellent Transport Links.



A two bedroom mid-terraced property situated in the town centre. Briefly comprising of a kitchen and living room on the ground floor. A double bedroom, a single bedroom and family bathroom on the first floor. Also benefits from rear garden. Close to local amenities and excellent transport links. Call now to arrange a viewing!

**LIVING ROOM** 11' 8" x 12' 6" (3.56m x 3.81m) A spacious living room situated at the front of the property.

**KITCHEN** 12' 4" x 13' 0" (3.76m x 3.96m) With a range of white wall and base units complimented with wood effect worktops. Also benefits from a freestanding oven and hob. There is also plumbing for

a washing machine and space for a fridge/freezer.

BEDROOM 11' 8" x 12' 3" (3.56m x 3.73m) A double bedroom situated on the first floor.

BEDROOM 12' 5" x 7' 5" (3.78m x 2.26m) A single bedroom situated on the first floor.

BATHROOM 9' 2" x 5' 3" (2.79m x 1.6m) Fitted with white three piece suite and over bath shower.

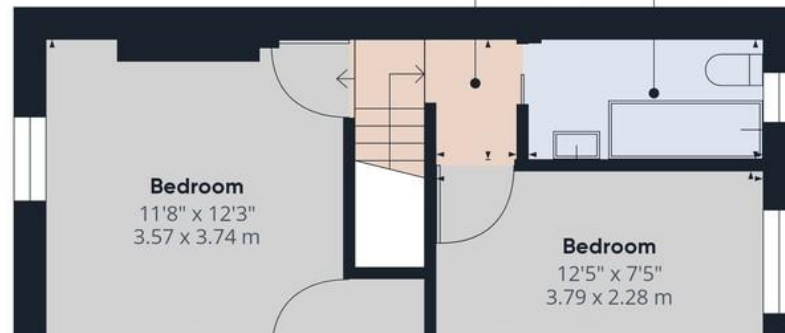
%epcGraph\_c\_1\_544%





**Hallway**  
2'8" x 3'3"  
0.83 x 0.99 m

Ground Floor



**Landing**  
3'0" x 5'0"  
0.94 x 1.54 m

**Bathroom**  
9'2" x 5'3"  
2.80 x 1.61 m

**Bedroom**  
11'8" x 12'3"  
3.57 x 3.74 m

**Bedroom**  
12'5" x 7'5"  
3.79 x 2.28 m

**Approximate total area<sup>(1)</sup>**  
640.56 ft<sup>2</sup>  
59.51 m<sup>2</sup>

(1) Excluding balconies and terraces

While every attempt has been made to ensure accuracy, all measurements are approximate, not to scale. This floor plan is for illustrative purposes only.

## Martin & Co Doncaster

38 Hall Gate • Doncaster • DN1 3NR  
T: 01302 343 494 • E: doncaster@martinco.com

# 01302 343 494

<http://www.martinco.com>



**Accuracy:** References to the Tenure of a Property are based on information supplied by the Seller. The Agent has not had sight of the title documents. A Buyer is advised to obtain verification from their Solicitor. Items shown in photographs including but not limited to carpets, fixtures and fittings are not included unless specifically mentioned within the sales particulars. They may however be available by separate negotiation. Buyers must check the availability of any property and make an appointment to view before embarking on any journey to see a property. No person in the employment of the agent has any authority to make any representation about the property, and accordingly any information given is entirely without responsibility on the part of the agents, sellers(s) or lessors(s). Any property particulars are not an offer or contract, nor form part of one. **Sonic / Laser Tape:** Measurements taken using a sonic / laser tape measure may be subject to a small margin of error. **All Measurements:** All Measurements are Approximate. **Services Not tested:** The Agent has not tested any apparatus, equipment, fixtures and fittings or services and so cannot verify that they are in working order or fit for the purpose. A Buyer is advised to obtain verification from their Solicitor or Surveyor.

