

ON HOLD



**Consort House, Waterdale,
£625 pcm**

MARTIN&CO



Consort House, Waterdale,

Studio,

1 bedroom, 1 bathroom

£625 pcm

Date available: 24th June 2024

Deposit: £721.15

Part Furnished

Council Tax band:

- Studio Apartment.
- Fully Refurbished.
- Modern Kitchen.
- Modern Bathroom.
- Washing Machine.
- Fridge/Freezer.
- Close to Local Amenities.

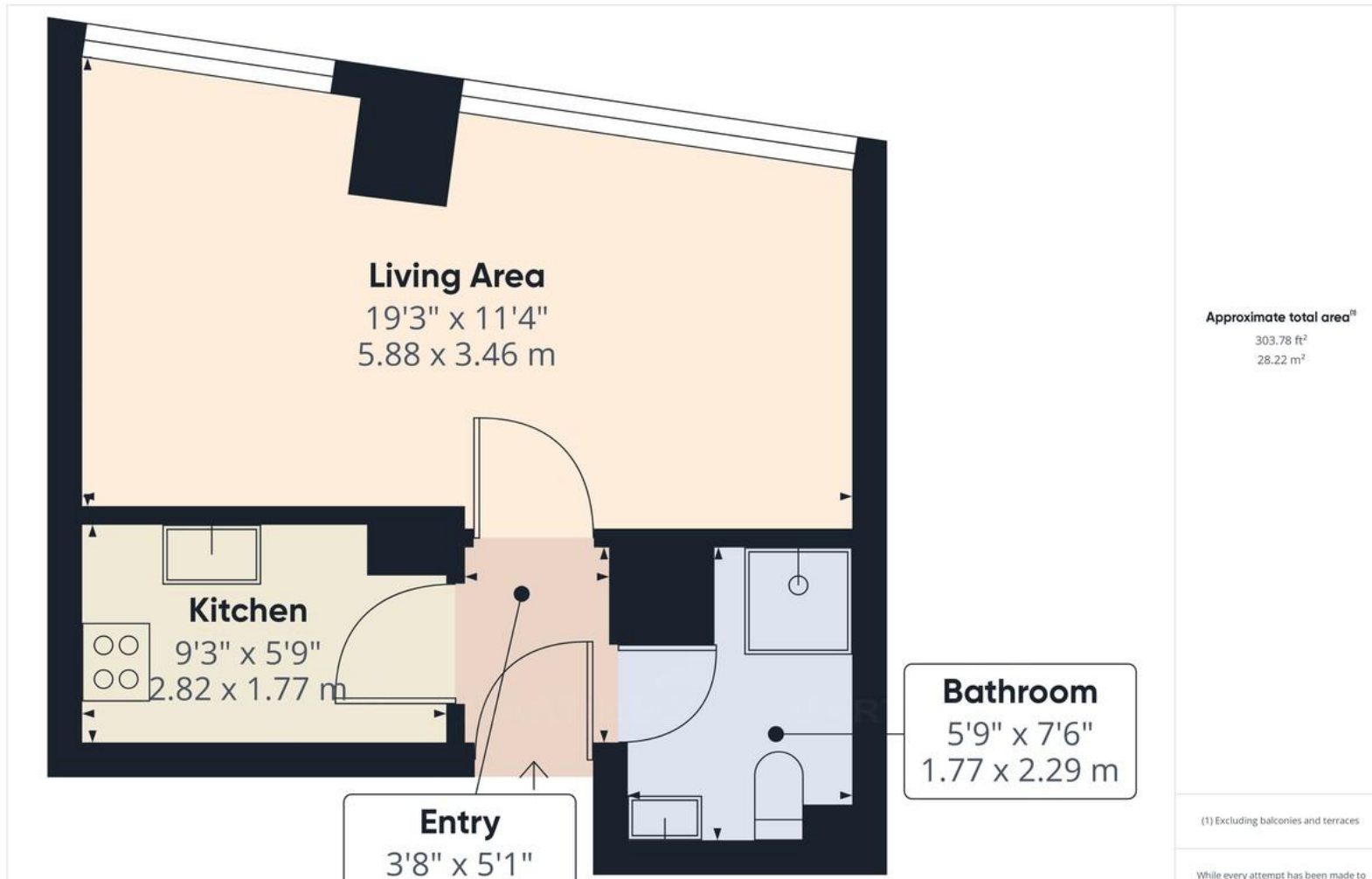
Martin and Co are pleased to present a newly refurbished studio apartment located in the City Centre. Briefly comprising of a Kitchen, Living Area and Bathroom. Also benefits from Washing Machine and Fridge/Freezer. Call now to arrange a viewing!

LIVING AREA 19' 3" x 11' 4" (5.87m x 3.45m) A spacious living area complimented with a bed, wardrobe, side table, two seater dining table with chairs, sofa, coffee table and TV cabinet.

KITCHEN 9' 3" x 5' 9" (2.82m x 1.75m) With a range of light grey wall and base units, complimented with wood effect worktops. Also benefits from an induction hob, oven, extractor fan, washing machine and fridge/freezer.

BATHROOM 5' 9" x 7' 6" (1.75m x 2.29m) A modern bathroom fitted with white two piece suite and corner shower unit.

%epcGraph_c_1_544%



Martin & Co Doncaster

38 Hall Gate • Doncaster • DN1 3NR
T: 01302 343 494 • E: doncaster@martinco.com

01302 343 494

<http://www.martinco.com>



Accuracy: References to the Tenure of a Property are based on information supplied by the Seller. The Agent has not had sight of the title documents. A Buyer is advised to obtain verification from their Solicitor. Items shown in photographs including but not limited to carpets, fixtures and fittings are not included unless specifically mentioned within the sales particulars. They may however be available by separate negotiation. Buyers must check the availability of any property and make an appointment to view before embarking on any journey to see a property. No person in the employment of the agent has any authority to make any representation about the property, and accordingly any information given is entirely without responsibility on the part of the agents, sellers(s) or lessors(s). Any property particulars are not an offer or contract, nor form part of one. **Sonic / Laser Tape:** Measurements taken using a sonic / laser tape measure may be subject to a small margin of error. **All Measurements:** All Measurements are Approximate. **Services Not tested:** The Agent has not tested any apparatus, equipment, fixtures and fittings or services and so cannot verify that they are in working order or fit for the purpose. A Buyer is advised to obtain verification from their Solicitor or Surveyor.