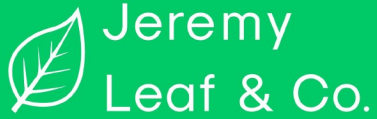


est 1979



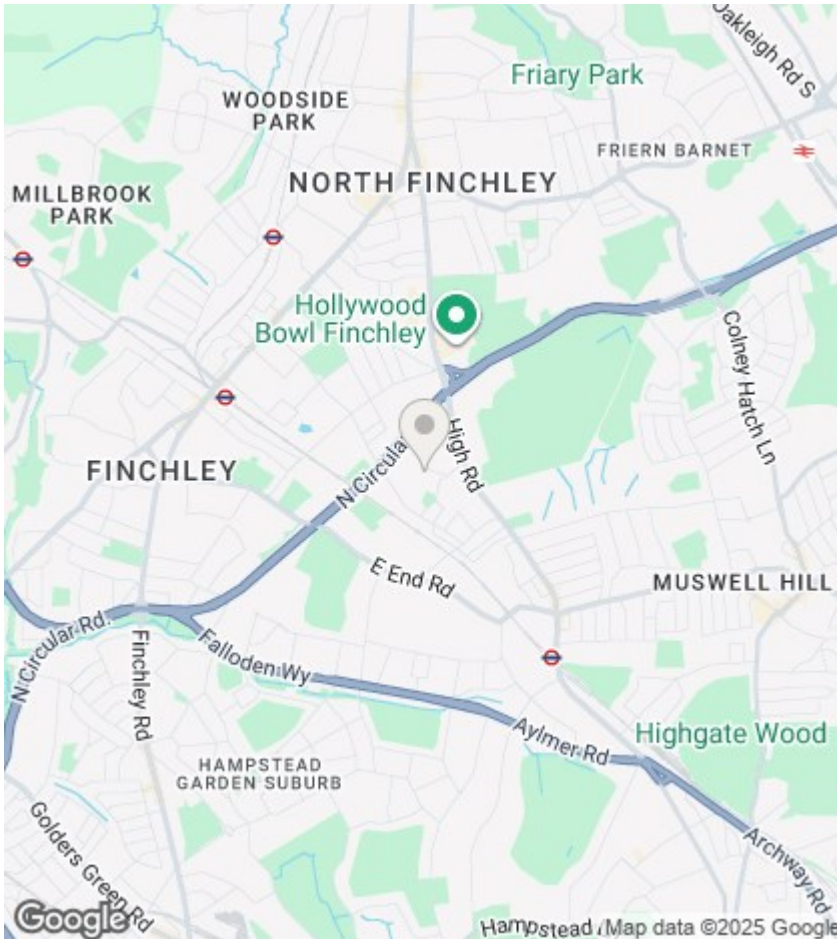
17 Simms Gardens, East Finchley, N2 8HT

£299,950

- Communal Gardens
- Service charge - £2,150 p.a.
- Council Tax Band D
- Close to High Road
- 141 Years Lease
- 1 mile to East Finchley Tube (Zone 3)
- Ground Rent £336 p.a.
- Large reception with dining area
- Residents Parking
- Chain Free

98 High Road, London, N2 9EB
020 8444 5222

eastfinchley@jeremyleaf.co.uk
<https://www.jeremyleaf.co.uk/>



Directions

Viewings

Viewings by arrangement only. Call 020 8444 5222 to make an appointment.

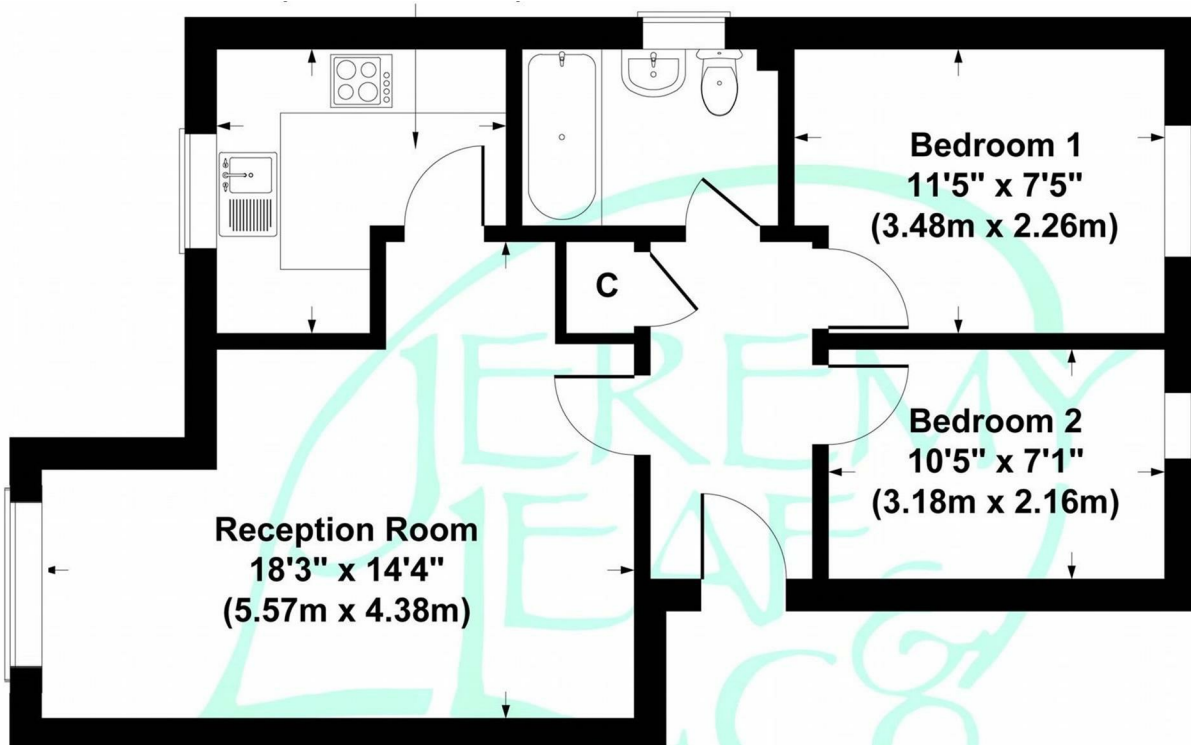
Council Tax Band:

D

EPC Rating:

D

Energy Efficiency Rating		
	Current	Potential
Very energy efficient - lower running costs		
(92 plus) A		
(81-91) B		
(69-80) C		75
(55-68) D	60	
(39-54) E		
(21-38) F		
(1-20) G		
Not energy efficient - higher running costs		
EU Directive 2002/91/EC		
England & Wales		



Ground Floor

Simms Gardens, London, N2

Gross Internal Area 570 sq ft / 53 sq metres