



14 Stretton Court, 24-28 Bournemouth Road, Poole BH14 0EX

A two bedroom pet friendly ground floor flat forming part of a small low rise block situated within the heart of Ashley Cross village.

EPC: 54 Council Tax Band: B Price: TBC

 **2**  **0**  **0**





Key Features

- TWO DOUBLE BEDROOM GROUND FLOOR FLAT
- SITUATED IN THE HEART OF ASHLEY CROSS VILLAGE
- LOUNGE/DINING ROOM WITH ACCESS ONTO A SMALL PATIO
- MODERN FITTED KITCHEN & SHOWER ROOM
- GAS CENTRAL HEATING AND DOUBLE GLAZING
- PET FRIENDLY
- VACANT POSSESSION
- SHARE OF THE FREEHOLD
- ALLOCATED PARKING SPACE
- SERVICE CHARGE £145 PER MONTH

The Property

The property has been updated in recent years and offers spacious and well configured accommodation presented in lovely condition throughout.

The front door opens into a welcoming reception hall with doors to all principal rooms.

There is a generous lounge/dining room which enjoys a sunny aspect overlooking the front of the development with a glass door opening onto a small patio area.

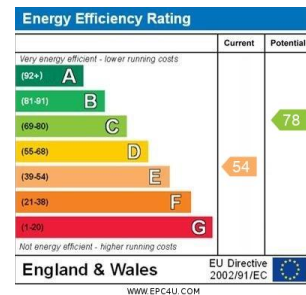
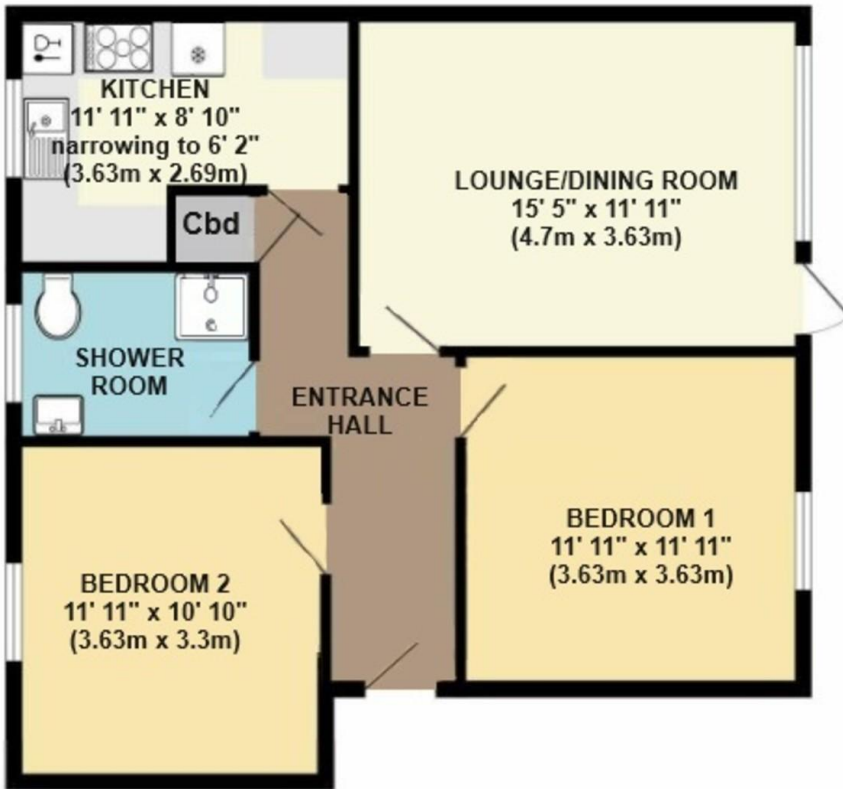
The kitchen has been refitted in recent years with a

good range of high gloss built in units and incorporates integrated fridge/freezer, split level oven, microwave, gas hob and dishwasher.

There are also two good size double bedrooms and a modern fitted shower room with a double walk in shower cubicle and mains shower.

Other features include gas central heating (new boiler 2019), share of the freehold, double glazing, and an allocated parking space.

Subletting is not permitted.



All rooms have been measured with an electronic laser and are approximate measurements only. To comply with the Consumer Protection from Unfair Trading Regulations 2008, we clarify that none of the services to the above property have been tested by ourselves, and we cannot guarantee that the installations described in the details are in perfect working order. Wilson Thomas for themselves, and for the vendors or lessors, produce these brochures in good faith, and are a guideline only. They do not constitute any part of a contract and are correct to the best of our knowledge at the time of going to press.

Broadstone Office
219 Lower Blandford Road, Broadstone, Dorset BH18 8DN
T: 01202 691122 E: broadstone@wilsonthomas.co.uk

Lower Parkstone Office
5 Bournemouth Road, Lower Parkstone, Poole, Dorset BH14 0EF
T: 01202 717771 E: lowerparkstone@wilsonthomas.co.uk

www.wilsonthomas.co.uk



[rightmove](#)

[OnTheMarket](#)

