



## 28 Hilltop Road, Corfe Mullen, Wimborne BH21 3PS

A two bedroom detached bungalow situated on a generous plot and now in need of extensive refurbishment.

**EPC:** TBC **Council Tax Band:** D **Price Guide:** £325,000 Freehold











## Key Features

- TWO BEDROOM DETACHED BUNGALOW
- LOUNGE
- KITCHEN WITH DINING AREA
- GOOD SIZE REAR GARDEN
- LONG DRIVEWAY TO GARAGE
- POTENTIAL TO EXTEND (STPP)
- POPULAR SCHOOL CATCHMENT AREA
- CLOSE TO LOCAL AMENITIES
- QUIET RESIDENTIAL LOCATION
- NO FORWARD CHAIN

## The Property

Situated in an established residential location close to amenities and bus routes is this two bedroom detached bungalow now in need of extensive refurbishment.

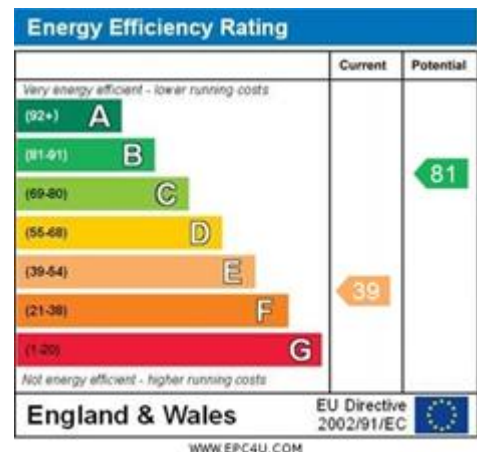
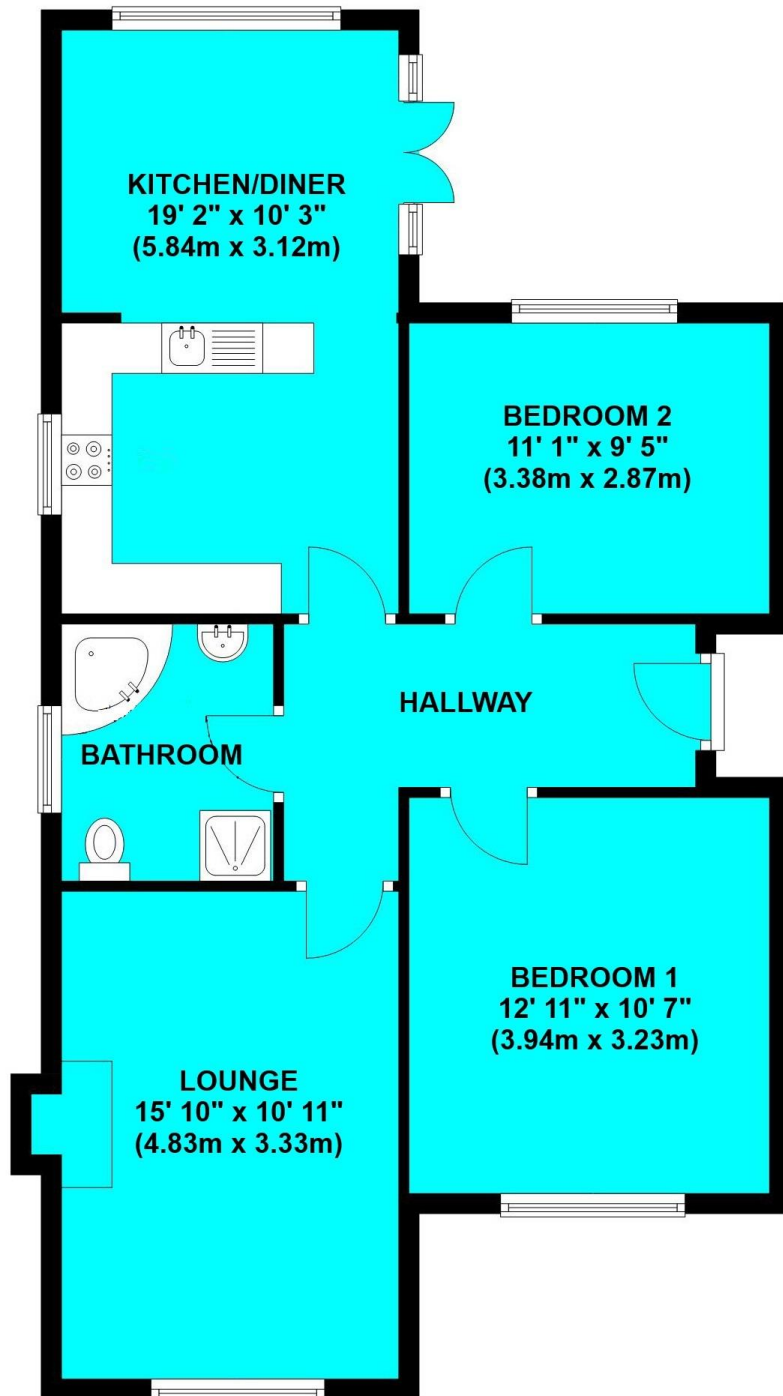
The property comprises of a reception hall with lounge, kitchen which has been extended to provide a dining area, two bedrooms and a bathroom. There is a front garden, a long driveway leading to a detached garage and then a generous rear garden.

The property offers great potential to extend and improve subject to the usual planning permissions.

Within the village of Corfe Mullen there is popular schooling for all age groups, doctors, dentists, a library and a private health club. Bus services connect to the nearby centres of Broadstone, Wimborne and Poole.

# Ground Floor

Approx. 74.9 sq. metres (806.4 sq. feet)



All rooms have been measured with an electronic laser and are approximate measurements only. To comply with the Consumer Protection from Unfair Trading Regulations 2008, we clarify that none of the services to the above property have been tested by ourselves, and we cannot guarantee that the installations described in the details are in perfect working order. Wilson Thomas for themselves, and for the vendors or lessors, produce these brochures in good faith, and are a guideline only. They do not constitute any part of a contract and are correct to the best of our knowledge at the time of going to press.

## Broadstone Office

219 Lower Blandford Road, Broadstone, Dorset BH18 8DN  
T: 01202 691122 E: broadstone@wilsonthomas.co.uk

## Lower Parkstone Office

5 Bournemouth Road, Lower Parkstone, Poole, Dorset BH14 0EF  
T: 01202 717771 E: lowerparkstone@wilsonthomas.co.uk

[www.wilsonthomas.co.uk](http://www.wilsonthomas.co.uk)



rightmove

OnTheMarket

**wt**  
**WILSON THOMAS**  
ESTATE AGENTS