



Everything you need to know about:

**Rose Street,  
Morecambe,  
LA4 5JB**



**Introduction**



**The Property**



**Local Authority**



**Transport Links**

**Education**



**Health**



**Local Policing**





### An invaluable insight into your new home

This i-PACK brochure offers an informed overview of **Rose Street** as a potential new home, along with essential material about its surrounding area and its local community. It provides a valuable insight for any prospective owner or tenant.

We wanted to provide you with information that you can absorb quickly, so we have presented it as visually as possible, making use of maps, icons, tables, graphs and charts. Overall, the brochure contains information about:

- **The Property** - including property details, floor plans, room details, photographs and Energy Performance Certificate.
- **Transport** - including locations of bus and coach stops, railway stations and ferry ports.
- **Health** - including locations, contact details and organisational information on the nearest GPs, pharmacies, hospitals and dentists.
- **Local Policing** - including locations, contact details and information about local community policing and the nearest police station, as well as police officers assigned to the area.
- **Education** - including locations of infant, primary and secondary schools and Key Performance Indicators (KPIs) for each key stage.



**Farrell Heyworth** 3-7 Victoria Street, Morecambe, LA4 4AE **01524 832929**



ROSE STREET, MORECAMBE £155,000



x2

Bedrooms



x1

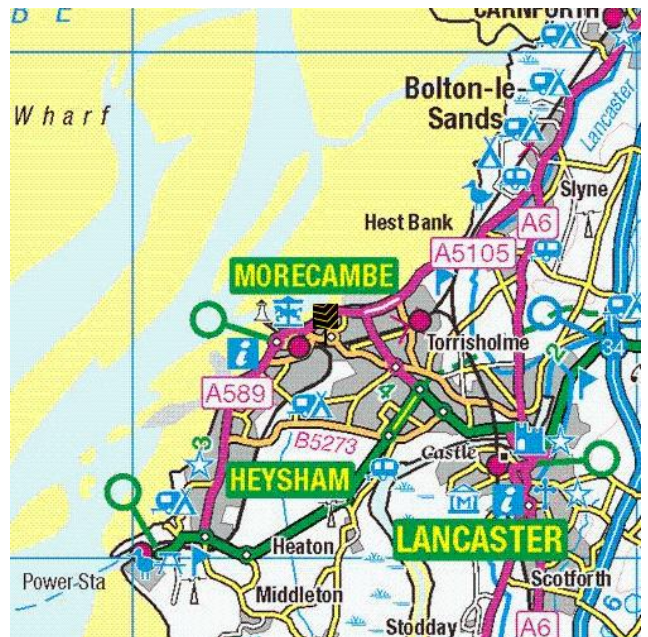
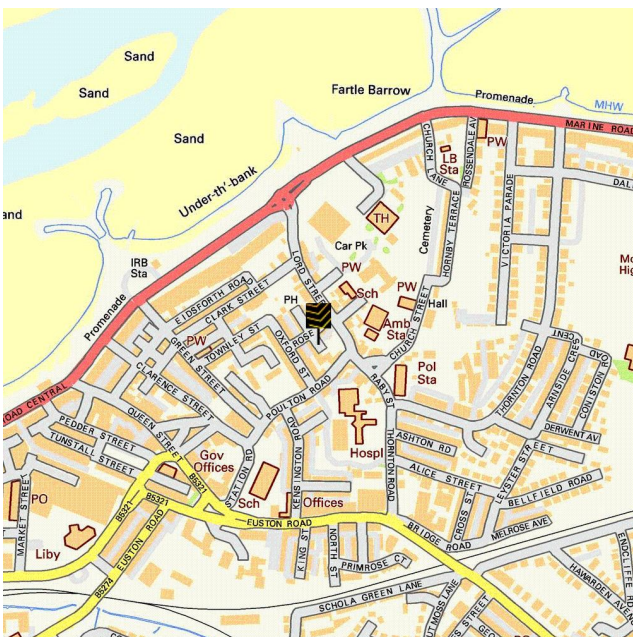
Living Rooms

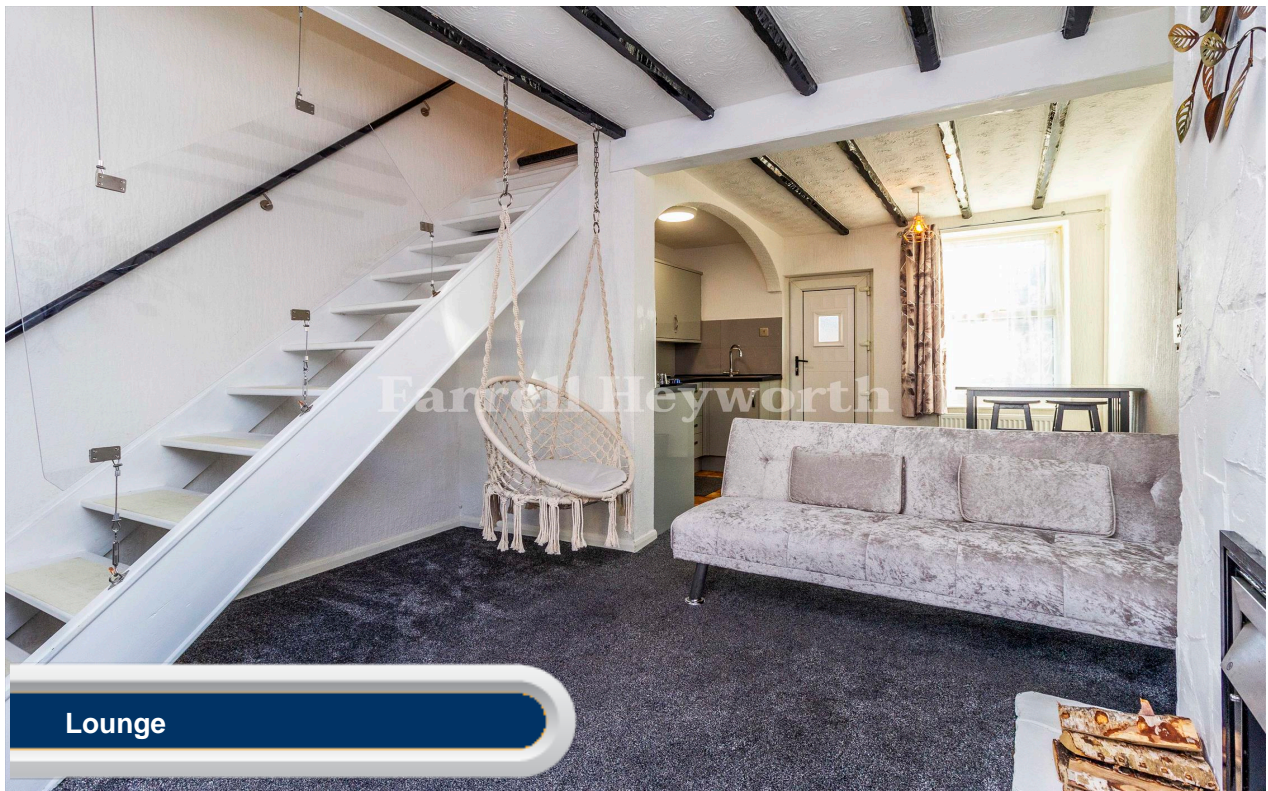


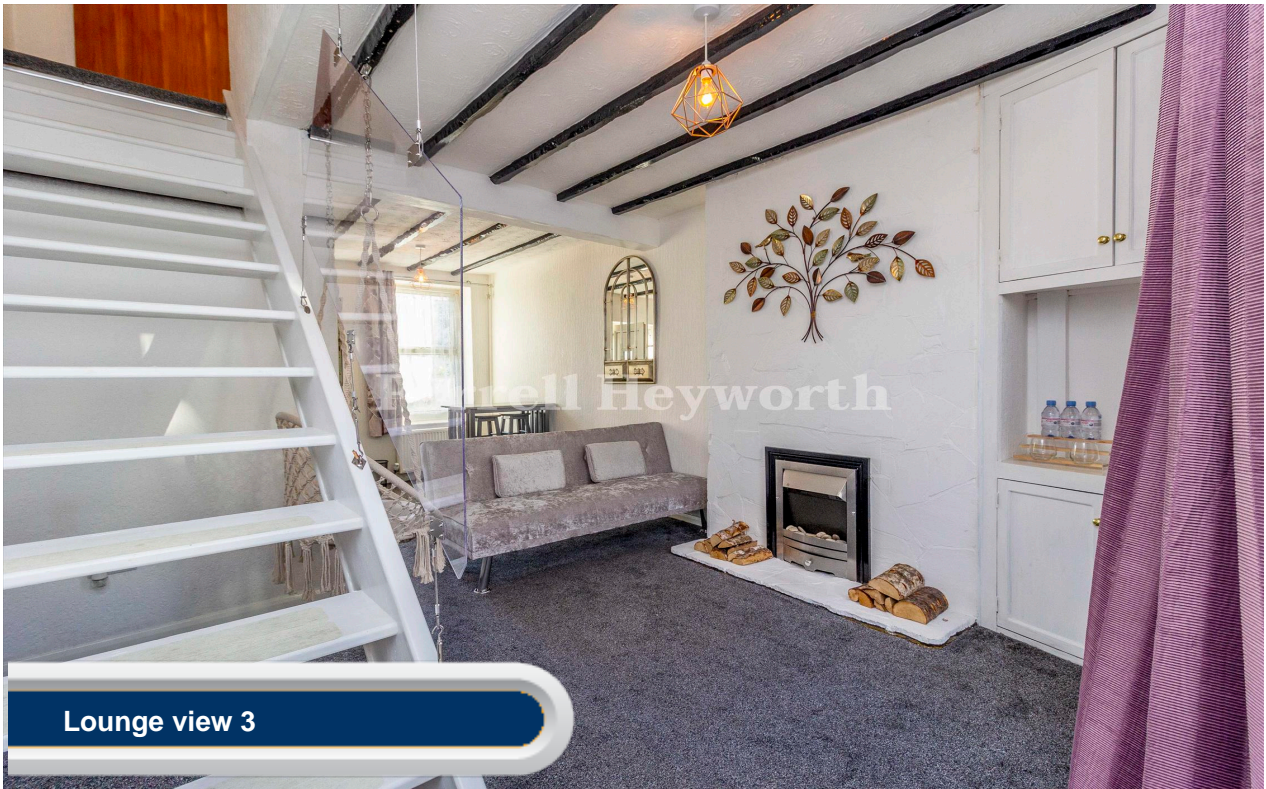
x1

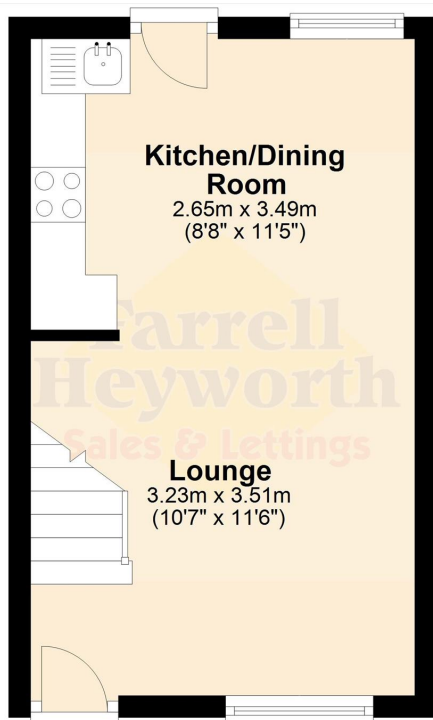
Bathrooms

Where you are

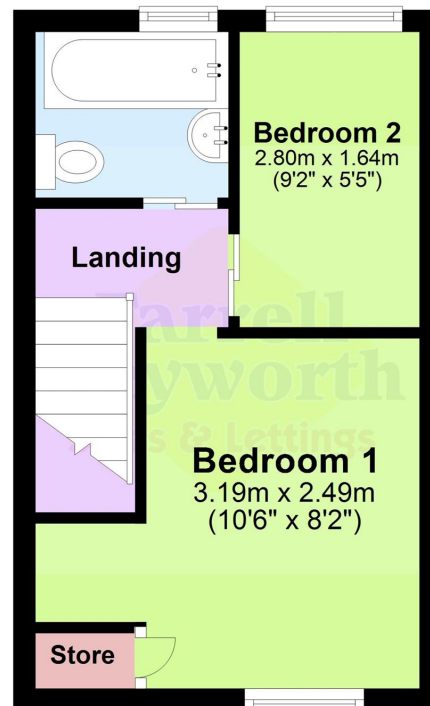








**Ground Floor**



**First Floor**





Everything you want  
to know about  
local authorities







**Get to know your local authorities**

Local government directly affects quality of life, particularly when it comes to council tax, planning, waste disposal and the impact of local policies. You may want to investigate how this is likely to affect you if you decide to move. There are nearly 400 local authorities in England, with five different types of local government structure. These can be broadly divided into **single-tier** and **two-tier authorities**.

Single-tier authorities are **Metropolitan Authorities**, **London Boroughs** and **Unitary** or **Shire Authorities**.

Two-tier authorities have both a **County Council**, and a **District Council** or **City Council**.

There are also around 10,000 parish and town councils, effectively creating an additional tier in some areas - mostly, but not exclusively, in rural areas. The National Association of Local Councils (NALC) represents and works on behalf of these community councils and is a useful contact point.

The local authority locations and contact details for **Rose Street** are:

Shire / County / District	Website	Address	Contact details
---------------------------	---------	---------	-----------------

**Disclaimer:** The information displayed above has been obtained using the property's postcode in proximity to its local authority. It is recommended that this information is independently verified.



Everything you want  
to know about  
transport links

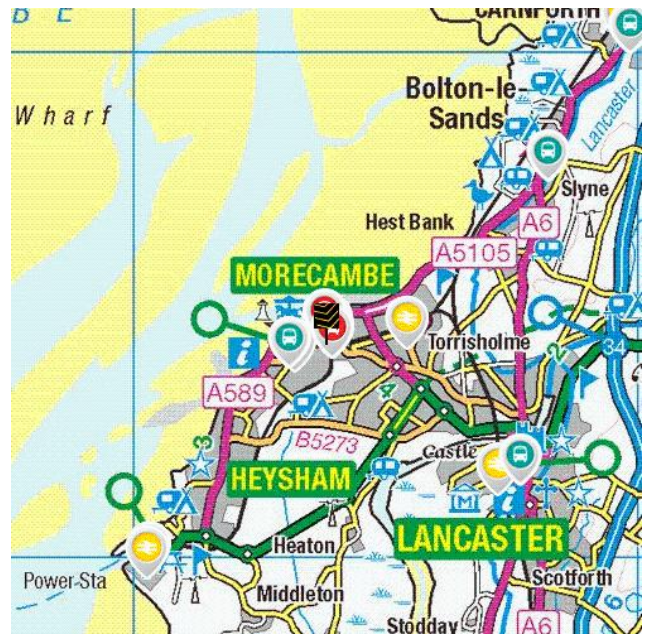
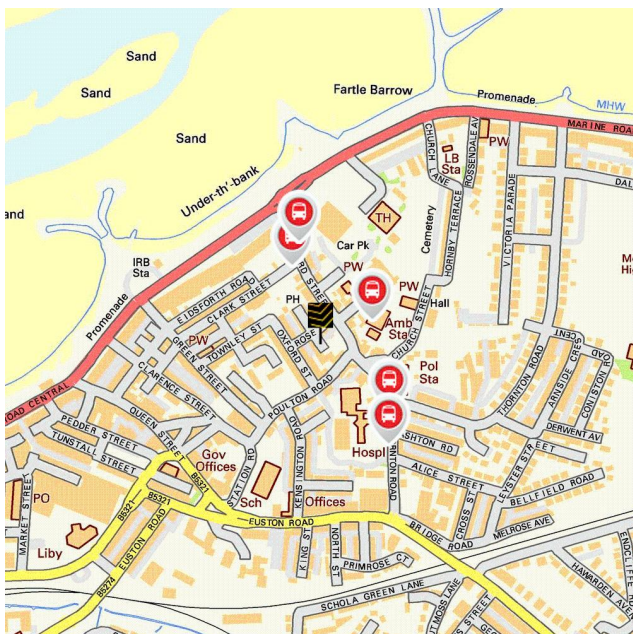







### Become familiar with public transport links

Being able to choose to travel by public transport is important for many reasons. It helps to reduce congestion, provides access to work and education, and facilitates use of health and leisure facilities. If you or your family members travel abroad, access to the nearest ferry terminals is also likely to be a significant factor in choosing a new property. Using the maps below, you can pinpoint the precise locations of transport links for **Rose Street**. Tables for each type of transport indicate the property's distance from the nearest bus stops, railway stations, coach stops and ferry terminals (providing that these facilities are within the scale proximity of the maps.)

## Transport Links





	Airports	Approx Distance
	Blackpool International Airport	21.75 miles
	Ferry ports	Approx Distance
	Heysham Ferry Terminal	3.52 miles
	Knott End-On-Sea Ferry Landing	11.51 miles
	Fleetwood for Knott End Ferry Landing	11.73 miles
	Piel Island Ferry Landing	12.69 miles
	Roa Island Ferry Landing	12.74 miles
	Train Stations	Approx Distance
	Morecambe Rail Station	0.48 miles
	Bare Lane Rail Station	0.99 miles
	Lancaster Rail Station	2.75 miles
	Heysham Port Rail Station	3.57 miles
	Carnforth Rail Station	5.24 miles

**Disclaimer:** The information represented in this section has been sourced from the Department of Transport's Open Data and is based on the property's postcode. It is recommended that this information is independently verified.



**Farrell Heyworth** 3-7 Victoria Street, Morecambe, LA4 4AE **01524 832929**

Bus Stops		Approx Distance
	Poulton Le Sands CEPS	0.06 miles
	Lord Street	0.09 miles
	Health Centre	0.09 miles
	Lord Street	0.11 miles
	Health Centre	0.12 miles
Coach Stops		Approx Distance
	Morecambe: Central Drive Bus Station	0.51 miles
	Lancaster Bus Station	2.9 miles
	Bolton le Sands (Lancs): Coach Stop	3.4 miles
	Carnforth: Lancaster Rd Coach Stop	5.19 miles
	Lancaster: University Underpass Coach Stop	5.35 miles

**Disclaimer:** The information represented in this section has been sourced from the Department of Transport's Open Data and is based on the property's postcode. It is recommended that this information is independently verified.



**Farrell Heyworth** 3-7 Victoria Street, Morecambe, LA4 4AE **01524 832929**



Everything you want  
to know about  
local schools



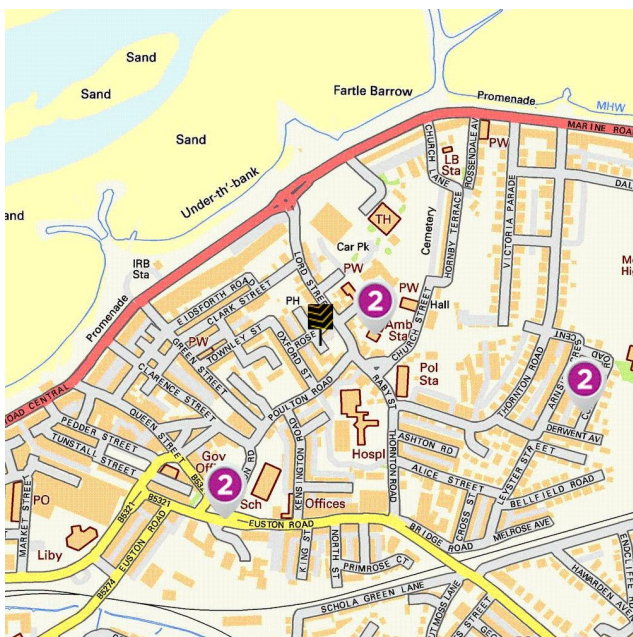


### How are local schools performing?

If schools are important to you, then this section sets out the published Key Performance Indicators for schools near to your prospective new home. Key Performance Indicators look primarily at how well pupils perform in their tests and examinations, as well as some other measures like attendance.

If you want to know more about a particular school or college, you can also visit the Ofsted website <http://www.ofsted.gov.uk/inspection-reports/find-inspection-report>

### Local Schools



The next page shows tables and charts divided into Key Stages and a list of respective schools local to **Rose Street**. There are four main age-related Key Stages defined as:



Special schools are marked with this icon

Key Stage	Definition
Key Stage 1	Fits broadly with the first stage of education, i.e. ages 5-7.
Key Stage 2	Fits the later stage of primary education, often known as junior schools, i.e. ages 8-11. This takes pupils up to the standardised break at age 11 after which pupils generally change schools and transfer to secondary education.
Key Stage 3	Secondary education split between key stages 3 and 4, with key stage 3 covering ages 11-13.
Key Stage 4	Key Stage 4 (ages 14-16) covers the two year period of study for GCSE level examinations.
Key Stage 5	Beyond key stage 4 is 16+ or Sixth Form provision, sometimes unofficially referred to as Key Stage 5.



**Farrell Heyworth** 3-7 Victoria Street, Morecambe, LA4 4AE **01524 832929**



	Key Stage 2 - Information	Approx Distance
	<p><b>Name:</b> Poulton-le-Sands Church of England Primary School  <b>Address:</b> Church Street, Morecambe, LA4 5QA  <b>Contact Number:</b> 01524413273  <b>Age Range:</b> 4-11 yrs  <b>Local Education Authority:</b> Lancashire  <b>Religious Character:</b> Church of England</p>	0.06 miles
	<p><b>Name:</b> Morecambe Bay Community Primary School  <b>Address:</b> Station Road, Morecambe, LA4 5JL  <b>Contact Number:</b> 01524401002  <b>Age Range:</b> 3-11 yrs  <b>Local Education Authority:</b> Lancashire  <b>Religious Character:</b> Does not apply</p>	0.19 miles
	<p><b>Name:</b> St Mary's Catholic Primary School, Morecambe  <b>Address:</b> Coniston Road, Morecambe, LA4 5PS  <b>Contact Number:</b> 01524413032  <b>Age Range:</b> 4-11 yrs  <b>Local Education Authority:</b> Lancashire  <b>Religious Character:</b> Roman Catholic</p>	0.27 miles
	<p><b>Name:</b> Lancaster Road Primary School  <b>Address:</b> Lancaster Road, Morecambe, LA4 5TH  <b>Contact Number:</b> 01524410914  <b>Age Range:</b> 4-11 yrs  <b>Local Education Authority:</b> Lancashire  <b>Religious Character:</b> Does not apply</p>	0.6 miles
	<p><b>Name:</b> Morecambe and Heysham Westgate Primary School  <b>Address:</b> Langridge Way, Morecambe, LA4 4XF  <b>Contact Number:</b> 01524832747  <b>Age Range:</b> 4-11 yrs  <b>Local Education Authority:</b> Lancashire  <b>Religious Character:</b> Does not apply</p>	0.93 miles

**Disclaimer:** The information represented in this section has been sourced from the Department of Education's 2019 results data s and is based on the property's postcode.




## Reading, Writing and Maths

	Name	Expected	Higher
	Poulton-le-Sands Church of England Primary School	46.0 %	0.0 %
	Morecambe Bay Community Primary School	32.0 %	2.0 %
	St Mary's Catholic Primary School, Morecambe	56.0 %	4.0 %
	Lancaster Road Primary School	57.0 %	9.0 %
	Morecambe and Heysham Westgate Primary School	57.0 %	0.0 %
	<b>Lancashire</b>	64.0 %	10.0 %
<b>National</b>	65.0 %	11.0 %	

## Primary Progress Measures

As well as actual pupil performance in tests and exams an important Key Performance Indicator is that of progress measures that compare the actual achievements of other pupils nationally with similar prior attainment. Any increase in attainment achieved by each pupil will be reflected in the schools progress scores. They are fairer to schools in challenging circumstances, as they recognise a school that is doing a good job with an intake with poor prior attainment



## Progress Measures for 2019

	Name	Math	Reading	Writing
	Poulton-le-Sands Church of England Primary School	-2.9 %	-2.4 %	-3.0 %
	Morecambe Bay Community Primary School	-0.7 %	-1.2 %	0.4 %
	St Mary's Catholic Primary School, Morecambe	-0.1 %	-0.1 %	-1.6 %
	Lancaster Road Primary School	-0.9 %	-1.8 %	-0.5 %
	Morecambe and Heysham Westgate Primary School	-0.7 %	-0.6 %	-1.2 %

**Disclaimer:** The information represented in this section has been sourced from the Department of Education's 2019 results data set and is based on the property's postcode.



Farrell Heyworth 3-7 Victoria Street, Morecambe, LA4 4AE 01524 832929

	Key Stage 4 - Information	Approx Distance
4	<b>Name:</b> Morecambe Bay Academy <b>Address:</b> Dallam Avenue, Morecambe, LA4 5BG <b>Contact Number:</b> 01524410207 <b>Age Range:</b> 11-18 yrs <b>Local Education Authority:</b> Lancashire <b>Religious Character:</b> Does not apply	0.39 miles
	<b>Name:</b> Morecambe Community High School <b>Address:</b> Dallam Avenue, Morecambe, LA4 5BG <b>Contact Number:</b> 01524410207 <b>Age Range:</b> 11-18 yrs <b>Local Education Authority:</b> Lancashire <b>Religious Character:</b> Does not apply	0.39 miles
	 <b>Name:</b> Morecambe Road School <b>Address:</b> Morecambe Road, Morecambe, LA3 3AB <b>Contact Number:</b> 01524414384 <b>Age Range:</b> 3-16 yrs <b>Local Education Authority:</b> Lancashire <b>Religious Character:</b> Does not apply	1.34 miles
	 <b>Name:</b> The Loyne Specialist School <b>Address:</b> Sefton Drive, Lancaster, LA1 2PZ <b>Contact Number:</b> 0152464543 <b>Age Range:</b> 2-19 yrs <b>Local Education Authority:</b> Lancashire <b>Religious Character:</b> Does not apply	2.1 miles
	<b>Name:</b> Our Lady's Catholic College <b>Address:</b> Morecambe Road, Lancaster, LA1 2RX <b>Contact Number:</b> 0152466689 <b>Age Range:</b> 11-18 yrs <b>Local Education Authority:</b> Lancashire <b>Religious Character:</b> Roman Catholic	2.59 miles

**Disclaimer:** The information represented in this section has been sourced from the Department of Education's 2019 results data and is based on the property's postcode.



**Percentage of pupils achieving 5+ A\*-C/9-4 or equivalents including 9-4 in both English and mathematics GCSEs**

	Name	2019	2018	2017	2016
4	Morecambe Bay Academy	N/A	N/A	N/A	N/A
	Morecambe Community High School	58.0 %	54.0 %	50.0 %	50.0 %
	Morecambe Road School	0.0 %	0.0 %	0.0 %	0.0 %
	The Loyne Specialist School	N/A	N/A	N/A	N/A
	Our Lady's Catholic College	51.0 %	56.0 %	50.0 %	52.0 %
	<b>Lancashire</b>	<b>66.0 %</b>	<b>66.1 %</b>	<b>61.7 %</b>	<b>58.5 %</b>
	<b>National</b>	<b>60.0 %</b>	<b>59.4 %</b>	<b>56.6 %</b>	<b>53.5 %</b>

**Disclaimer:** The information represented in this section has been sourced from the Department of Education's 2017 results data set and is based on the property's postcode.

**Average number of GCSE entries per pupil**

	Name	Number
4	Morecambe Bay Academy	N/A
	Morecambe Community High School	6.9
	Morecambe Road School	1.2
	The Loyne Specialist School	N/A
	Our Lady's Catholic College	6.6
	<b>Lancashire</b>	<b>7.5</b>
	<b>National</b>	<b>7.1</b>

**Disclaimer:** The information represented in this section has been sourced from the Department of Education's 2019 results data set and is based on the property's postcode.




	Key Stage 5 - Information	Approx Distance
	<p><b>Name:</b> Morecambe Community High School  <b>Address:</b> Dallam Avenue, Morecambe, LA4 5BG  <b>Contact Number:</b> 01524410207  <b>Age Range:</b> 11-18 yrs  <b>Local Education Authority:</b> Lancashire  <b>Religious Character:</b> Does not apply</p>	0.39 miles
	<p><b>Name:</b> Bay Leadership Academy  <b>Address:</b> Limes Avenue, Morecambe, LA3 1HS  <b>Contact Number:</b> 01524416830  <b>Age Range:</b> 11-18 yrs  <b>Local Education Authority:</b> Lancashire  <b>Religious Character:</b> Does not apply</p>	1.25 miles
	<p><b>Name:</b> Lancaster and Morecambe College  <b>Address:</b> Morecambe Road, Lancaster, LA1 2TY  <b>Contact Number:</b> 0152466215  <b>Age Range:</b> 16+ yrs  <b>Local Education Authority:</b> Lancashire  <b>Religious Character:</b> Does not apply  <b>Admission Policy:</b> Not applicable</p>	1.57 miles
	<p><b>Name:</b> Our Lady's Catholic College  <b>Address:</b> Morecambe Road, Lancaster, LA1 2RX  <b>Contact Number:</b> 0152466689  <b>Age Range:</b> 11-18 yrs  <b>Local Education Authority:</b> Lancashire  <b>Religious Character:</b> Roman Catholic</p>	2.59 miles
	<p><b>Name:</b> Lancaster Girls' Grammar School  <b>Address:</b> Regent Street, Lancaster, LA1 1SF  <b>Contact Number:</b> 01524581661  <b>Age Range:</b> 11-18 yrs  <b>Local Education Authority:</b> Lancashire  <b>Religious Character:</b> None  <b>Admission Policy:</b> Selective</p>	3.02 miles

**Disclaimer:** The information represented in this section has been sourced from the Department of Education's 2019 results data s and is based on the property's postcode.



**Percentage of A level students achieving at least three levels at grades AAB or better, at least two of which are in facilitating subjects**

	Name	%
	Morecambe Community High School	6.1 %
	Bay Leadership Academy	N/A
	Lancaster and Morecambe College	N/A
	Our Lady's Catholic College	10.0 %
	Lancaster Girls' Grammar School	46.9 %
	<b>Lancashire</b>	<b>15.1 %</b>
	<b>National</b>	<b>16.5 %</b>

**Disclaimer:** The information represented in this section has been sourced from the Department of Education's 2019 results data set and is based on the property's postcode.

As well as actual pupil performance in tests and exams, an important Key Performance Indicator is that of Value Added. When pupils start a school, they all have varying levels of ability and social advantage. A school's Value Added score measures how much progress they have made from the beginning to the end of their compulsory secondary education (i.e. between the end of Key Stage 2 and the end of Key Stage 4). It is a quick measurement of the effect of a school on its pupils.

	Name	Value Added
	Morecambe Community High School	-0.5
	Bay Leadership Academy	-0.5
	Lancaster and Morecambe College	N/A
	Our Lady's Catholic College	0.5
	Lancaster Girls' Grammar School	0.0



**Farrell Heyworth** 3-7 Victoria Street, Morecambe, LA4 4AE 01524 832929



Everything you want  
to know about  
local health services





**How local are the health services?**

We all want good access to local health facilities, wherever we live. To see how well **Rose Street** is served, we have set out below the exact locations of hospitals, Accident & Emergency centres, GPs, pharmacies, dentists, out-of-hours medical care and walk-in clinics. Where it's available, you will find more detailed information, including the names of practitioners and their contact details.

Hospitals		Approx Distance
	Royal Lancaster Infirmary, Ashton Road, Lancaster, Lancashire, LA1 4RP	3.28 miles
	Furness General Hospital, Dalton Lane, Barrow-In-Furness, Cumbria, LA14 4LF	14.73 miles
	Westmorland General Hospital, Kendal, LA9 7RG	16.85 miles
	Blackpool Victoria Hospital, Whinney Heys Road, Blackpool, Lancashire, FY3 8NR	18.63 miles
	Royal Preston Hospital, Sharoe Green Lane North, Preston, Lancashire, PR2 9HT	20.49 miles
A&E		Approx Distance
	Royal Lancaster Infirmary, Ashton Road, Lancaster, Lancashire, LA1 4RP	3.28 miles
	Furness General Hospital, Dalton Lane, Barrow-In-Furness, Cumbria, LA14 4LF	14.73 miles
	Blackpool Victoria Hospital, Whinney Heys Road, Blackpool, Lancashire, FY3 8NR	18.63 miles
	Royal Preston Hospital, Sharoe Green Lane North, Preston, Lancashire, PR2 9HT	20.49 miles
	Royal Blackburn Hospital, Haslingden Road, Blackburn, Lancashire, BB2 3HH	28.26 miles



	Walk-in Clinics	Approx Distance
	Same Day Health Centre – Morecambe, Same Day Health Centre, Morecambe, Lancashire, LA4 5LY	0.1 miles
	Same Day Health Centre – Fleetwood, Same Day Health Centre, Fleetwood, Lancashire, FY7 6HP	12.22 miles
	Westmorland General Hospital, Kendal, LA9 7RG	16.85 miles
	Blackpool Victoria Hospital, Whinney Heys Road, Blackpool, Lancashire, FY3 8NR	18.63 miles
	Blackpool Nhs Walk-in Centre, Whitegate Health Centre, Blackpool, Lancashire, FY3 9ES	19.4 miles
	GPs	Approx Distance
	COASTAL MEDICAL GROUP, COASTAL MEDICAL GROUP, LA4 5LY	0.09 miles
	YORK BRIDGE SURGERY, YORK BRIDGE SURGERY, LANCASHIRE, LA4 5TE	0.32 miles
	THE WESTGATE MED PRACTICE, THE WESTGATE MED PRACTICE, MORECAMBE, LANCASHIRE, LA4 4UZ	0.94 miles
	STRAWBERRY GARDENS MEDICAL PRACTICE, HEYSHAM PRIMARY CARE CTR, LANCASHIRE, LA3 2LE	2.38 miles
	OWEN ROAD SURGERY, 67 OWEN ROAD, LANCASHIRE, LA1 2LG	2.57 miles
	Dental Surgeons	Approx Distance
	Lancaster Dental Clinic, 8 Aldrens Lane, LANCASTER, Lancashire, LA1 2DU	2.63 miles
	Mayo Dental Clinic, 3 Meeting House Lane, LANCASTER, Lancashire, LA1 1TJ	2.84 miles
	Central Dental Practice, Telephone House, LANCASTER, Lancashire, LA1 1AB	2.88 miles
	Bay Dental Partnership, 6 New Street, LANCASTER, Lancashire, LA1 1EG	2.9 miles
	Mayo Dental Clinic, Dallas Road, LANCASTER, Lancashire, LA1 1TW	2.94 miles

**Disclaimer:** The information represented in this section has been sourced from Experian and is based on the property's postcode.



**Farrell Heyworth** 3-7 Victoria Street, Morecambe, LA4 4AE 01524 832929



Everything you want  
to know about  
local policing





### Understanding who polices your neighbourhood

When you move to a new area, you want to know the arrangements for local community policing. See below for essential information about police services near to **Rose Street**. We have included location and contact details for the police station and wherever possible, details of police officers assigned to the area.

#### Your policing neighbourhood

The name of your policing neighbourhood is **Poulton in Morecambe** and it has a population of **7623**.

#### Your Local Policing Team

Name	Rank	Tel No.	E-mail
Abby Twiname	PCSO		
Heather Joslin	PCSO		
Robert Brookbanks	Constable		
Linda Head	Constable		

**Disclaimer:** The information represented in this section has been sourced from data.police.uk.

**Disclaimer:** The information represented in this section has been sourced from data.police.uk.

**Farrell Heyworth** 3-7 Victoria Street, Morecambe, LA4 4AE **01524 832929**

