



Everything you need to know about:

**Cherry Tree Close,  
Heysham, Morecambe,  
LA3 2RU**



**Introduction**



**The Property**



**Local Authority**



**Transport Links**

**Education**



**Health**



**Local Policing**







### An invaluable insight into your new home

This i-PACK brochure offers an informed overview of **Cherry Tree Close** as a potential new home, along with essential material about its surrounding area and its local community. It provides a valuable insight for any prospective owner or tenant.

We wanted to provide you with information that you can absorb quickly, so we have presented it as visually as possible, making use of maps, icons, tables, graphs and charts. Overall, the brochure contains information about:

- **The Property** - including property details, floor plans, room details, photographs and Energy Performance Certificate.
- **Transport** - including locations of bus and coach stops, railway stations and ferry ports.
- **Health** - including locations, contact details and organisational information on the nearest GPs, pharmacies, hospitals and dentists.
- **Local Policing** - including locations, contact details and information about local community policing and the nearest police station, as well as police officers assigned to the area.
- **Education** - including locations of infant, primary and secondary schools and Key Performance Indicators (KPIs) for each key stage.



**Farrell Heyworth** 3-7 Victoria Street, Morecambe, LA4 4AE **01524 832929**





CHERRY TREE CLOSE, MORECAMBE £550,000



x7

Bedrooms



x2

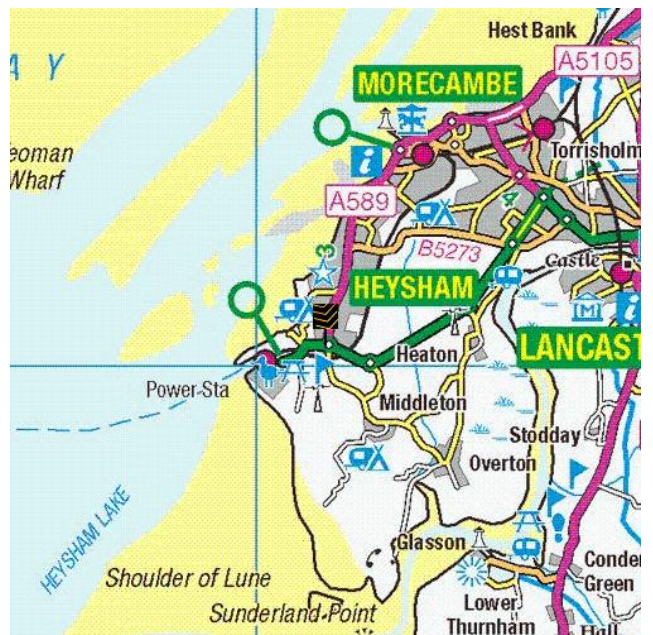
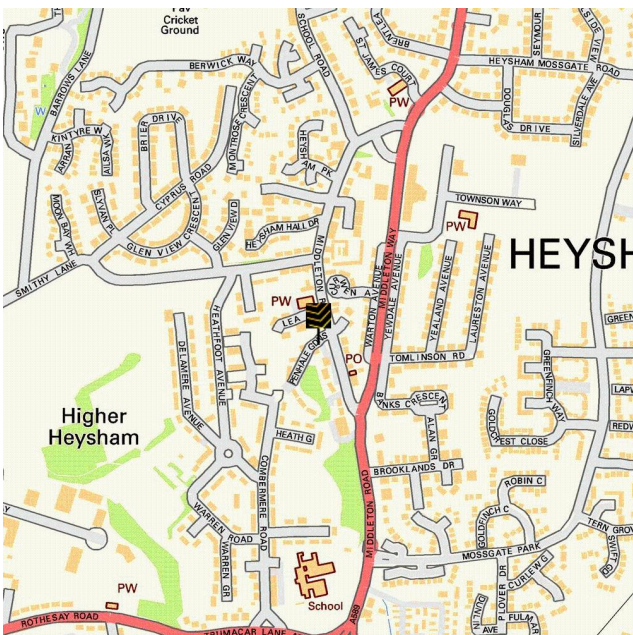
Living Rooms



x3

Bathrooms

Where you are

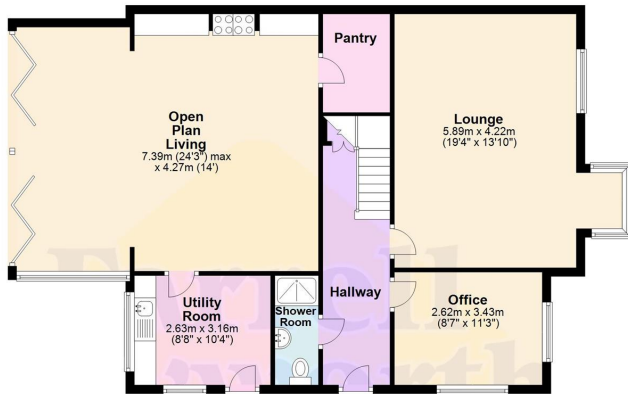




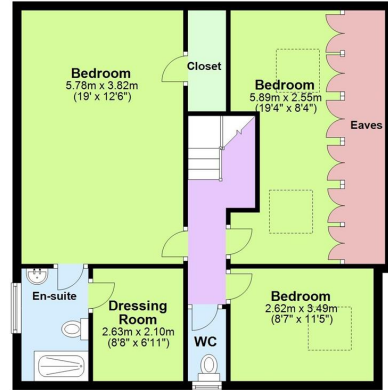




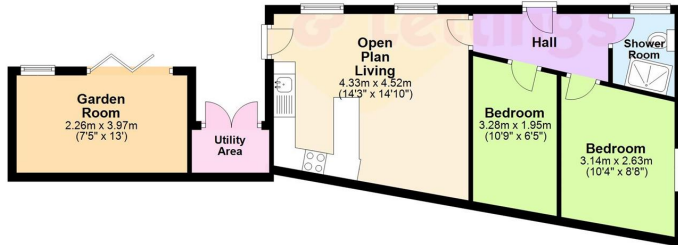




Ground Floor



First Floor







Everything you want  
to know about  
local authorities







**Get to know your local authorities**

Local government directly affects quality of life, particularly when it comes to council tax, planning, waste disposal and the impact of local policies. You may want to investigate how this is likely to affect you if you decide to move. There are nearly 400 local authorities in England, with five different types of local government structure. These can be broadly divided into **single-tier** and **two-tier authorities**.

Single-tier authorities are **Metropolitan Authorities, London Boroughs** and **Unitary or Shire Authorities**.

Two-tier authorities have both a **County Council**, and a **District Council or City Council**.

There are also around 10,000 parish and town councils, effectively creating an additional tier in some areas - mostly, but not exclusively, in rural areas. The National Association of Local Councils (NALC) represents and works on behalf of these community councils and is a useful contact point.

The local authority locations and contact details for **Cherry Tree Close** are:

Shire / County / District	Website	Address	Contact details
---------------------------	---------	---------	-----------------

**Disclaimer:** The information displayed above has been obtained using the property's postcode in proximity to its local authority. It is recommended that this information is independently verified.



Everything you want  
to know about  
transport links



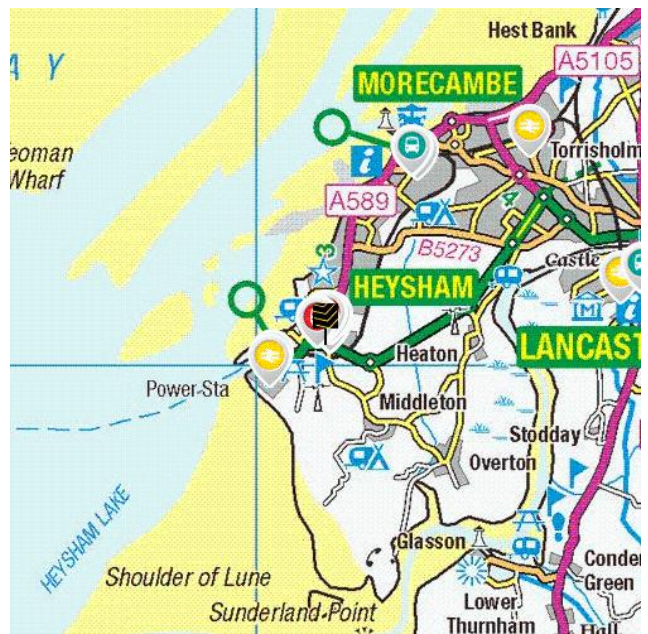







**Become familiar with public transport links**

Being able to choose to travel by public transport is important for many reasons. It helps to reduce congestion, provides access to work and education, and facilitates use of health and leisure facilities. If you or your family members travel abroad, access to the nearest ferry terminals is also likely to be a significant factor in choosing a new property. Using the maps below, you can pinpoint the precise locations of transport links for **Cherry Tree Close**. Tables for each type of transport indicate the property's distance from the nearest bus stops, railway stations, coach stops and ferry terminals (providing that these facilities are within the scale proximity of the maps.)

**Transport Links**



	Airports	Approx Distance
	Blackpool International Airport	19.02 miles
	Liverpool John Lennon Airport	48.51 miles
	Ferry ports	Approx Distance
	Heysham Ferry Terminal	0.78 miles
	Knott End-On-Sea Ferry Landing	8.71 miles
	Fleetwood for Knott End Ferry Landing	8.93 miles
	Piel Island Ferry Landing	11.32 miles
	Roa Island Ferry Landing	11.5 miles
	Train Stations	Approx Distance
	Heysham Port Rail Station	0.82 miles
	Morecambe Rail Station	2.37 miles
	Bare Lane Rail Station	3.44 miles
	Lancaster Rail Station	3.65 miles
	Carnforth Rail Station	8.01 miles

**Disclaimer:** The information represented in this section has been sourced from the Department of Transport's Open Data and is based on the property's postcode. It is recommended that this information is independently verified.



**Farrell Heyworth** 3-7 Victoria Street, Morecambe, LA4 4AE 01524 832929



	Bus Stops	Approx Distance
	Tomlinson Road	0.06 miles
	Tomlinson Road	0.07 miles
	Warton Drive	0.09 miles
	Middleton Road	0.09 miles
	Heathfoot Avenue	0.1 miles
	Coach Stops	Approx Distance
	Morecambe: Central Drive Bus Station	2.37 miles
	Lancaster Bus Station	3.94 miles
	Lancaster: University Underpass Coach Stop	4.94 miles
	Galgate: Crossroads Coach Stop	5.46 miles
	Bolton le Sands (Lancs): Coach Stop	6.11 miles

**Disclaimer:** The information represented in this section has been sourced from the Department of Transport's Open Data and is based on the property's postcode. It is recommended that this information is independently verified.



**Farrell Heyworth** 3-7 Victoria Street, Morecambe, LA4 4AE **01524 832929**



Everything you want  
to know about  
local schools





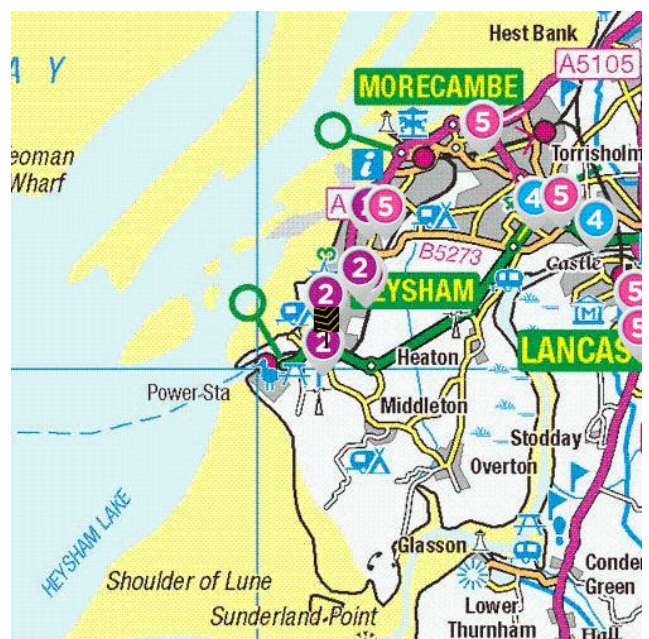
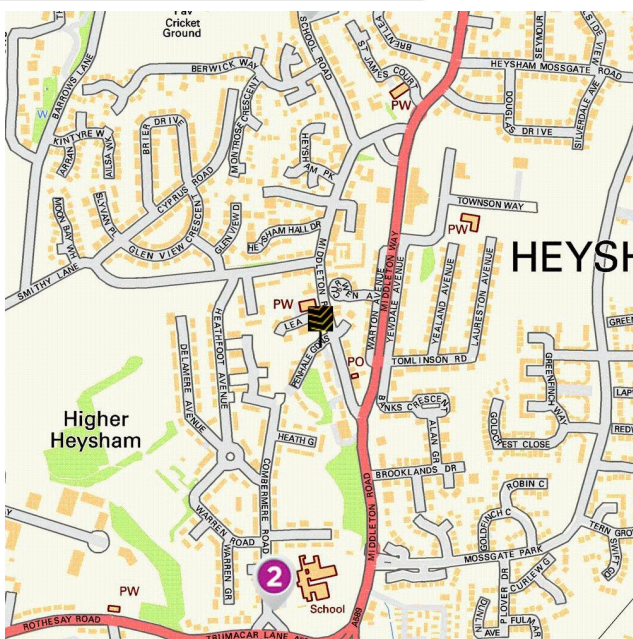


### How are local schools performing?

If schools are important to you, then this section sets out the published Key Performance Indicators for schools near to your prospective new home. Key Performance Indicators look primarily at how well pupils perform in their tests and examinations, as well as some other measures like attendance.

If you want to know more about a particular school or college, you can also visit the Ofsted website <http://www.ofsted.gov.uk/inspection-reports/find-inspection-report>

### Local Schools



The next page shows tables and charts divided into Key Stages and a list of respective schools local to **Cherry Tree Close**. There are four main age-related Key Stages defined as:



Special schools are marked with this icon

Key Stage	Definition
Key Stage 1	Fits broadly with the first stage of education, i.e. ages 5-7.
Key Stage 2	Fits the later stage of primary education, often known as junior schools, i.e. ages 8-11. This takes pupils up to the standardised break at age 11 after which pupils generally change schools and transfer to secondary education.
Key Stage 3	Secondary education split between key stages 3 and 4, with key stage 3 covering ages 11-13.
Key Stage 4	Key Stage 4 (ages 14-16) covers the two year period of study for GCSE level examinations.
Key Stage 5	Beyond key stage 4 is 16+ or Sixth Form provision, sometimes unofficially referred to as Key Stage 5.



**Farrell Heyworth** 3-7 Victoria Street, Morecambe, LA4 4AE **01524 832929**



	Key Stage 2 - Information	Approx Distance
	<p><b>Name:</b> Trumacar Nursery and Community Primary School  <b>Address:</b> Combermere Road, Morecambe, LA3 2ST  <b>Contact Number:</b> 07913758162  <b>Age Range:</b> 3-11 yrs  <b>Local Education Authority:</b> Lancashire  <b>Religious Character:</b> Does not apply</p>	0.25 miles
	<p><b>Name:</b> Heysham St Peter's Church of England Primary School  <b>Address:</b> School Road, Morecambe, LA3 2RF  <b>Contact Number:</b> 01524852155  <b>Age Range:</b> 4-11 yrs  <b>Local Education Authority:</b> Lancashire  <b>Religious Character:</b> Church of England</p>	0.33 miles
	<p><b>Name:</b> St Patrick's Catholic Primary School  <b>Address:</b> Littledale Avenue, Morecambe, LA3 2ER  <b>Contact Number:</b> 01524851766  <b>Age Range:</b> 5-11 yrs  <b>Local Education Authority:</b> Lancashire  <b>Religious Character:</b> Roman Catholic</p>	0.76 miles
	<p><b>Name:</b> Mossgate Primary School  <b>Address:</b> Kingsway, Morecambe, LA3 2EE  <b>Contact Number:</b> 01524850736  <b>Age Range:</b> 4-11 yrs  <b>Local Education Authority:</b> Lancashire  <b>Religious Character:</b> Does not apply</p>	0.78 miles
	<p><b>Name:</b> Morecambe and Heysham Sandylands Community Primary School  <b>Address:</b> Hampton Road, Morecambe, LA3 1EJ  <b>Contact Number:</b> 01524410286  <b>Age Range:</b> 2-11 yrs  <b>Local Education Authority:</b> Lancashire  <b>Religious Character:</b> Does not apply</p>	1.52 miles

**Disclaimer:** The information represented in this section has been sourced from the Department of Education's 2019 results data s and is based on the property's postcode.



## Reading, Writing and Maths

	Name	Expected	Higher
2	Trumacar Nursery and Community Primary School	64.0 %	9.0 %
	Heysham St Peter's Church of England Primary School	60.0 %	9.0 %
	St Patrick's Catholic Primary School	48.0 %	0.0 %
	Mossgate Primary School	50.0 %	11.0 %
	Morecambe and Heysham Sandylands Community Primary School	46.0 %	2.0 %
	<b>Lancashire</b>	64.0 %	10.0 %
	<b>National</b>	65.0 %	11.0 %

## Primary Progress Measures

As well as actual pupil performance in tests and exams an important Key Performance Indicator is that of progress measures that compare the actual achievements of other pupils nationally with similar prior attainment. Any increase in attainment achieved by each pupil will be reflected in the schools progress scores. They are fairer to schools in challenging circumstances, as they recognise a school that is doing a good job with an intake with poor prior attainment

## Progress Measures for 2019




	Name	Math	Reading	Writing
2	Trumacar Nursery and Community Primary School	1.9 %	2.4 %	1.4 %
	Heysham St Peter's Church of England Primary School	-3.5 %	-3.7 %	-0.7 %
	St Patrick's Catholic Primary School	0.1 %	0.6 %	0.9 %
	Mossgate Primary School	1.1 %	-0.9 %	0.0 %
	Morecambe and Heysham Sandylands Community Primary School	-1.6 %	-3.1 %	-3.2 %

**Disclaimer:** The information represented in this section has been sourced from the Department of Education's 2019 results data set and is based on the property's postcode.



Farrell Heyworth 3-7 Victoria Street, Morecambe, LA4 4AE 01524 832929



	Key Stage 4 - Information	Approx Distance
	 <p><b>Name:</b> Morecambe Road School  <b>Address:</b> Morecambe Road, Morecambe, LA3 3AB  <b>Contact Number:</b> 01524414384  <b>Age Range:</b> 3-16 yrs  <b>Local Education Authority:</b> Lancashire  <b>Religious Character:</b> Does not apply</p>	2.97 miles
	<p><b>Name:</b> Morecambe Bay Academy  <b>Address:</b> Dallam Avenue, Morecambe, LA4 5BG  <b>Contact Number:</b> 01524410207  <b>Age Range:</b> 11-18 yrs  <b>Local Education Authority:</b> Lancashire  <b>Religious Character:</b> Does not apply</p>	3.09 miles
	<p><b>Name:</b> Morecambe Community High School  <b>Address:</b> Dallam Avenue, Morecambe, LA4 5BG  <b>Contact Number:</b> 01524410207  <b>Age Range:</b> 11-18 yrs  <b>Local Education Authority:</b> Lancashire  <b>Religious Character:</b> Does not apply</p>	3.09 miles
	 <p><b>Name:</b> The Loyne Specialist School  <b>Address:</b> Sefton Drive, Lancaster, LA1 2PZ  <b>Contact Number:</b> 0152464543  <b>Age Range:</b> 2-19 yrs  <b>Local Education Authority:</b> Lancashire  <b>Religious Character:</b> Does not apply</p>	3.53 miles
	<p><b>Name:</b> Lancaster Girls' Grammar School  <b>Address:</b> Regent Street, Lancaster, LA1 1SF  <b>Contact Number:</b> 01524581661  <b>Age Range:</b> 11-18 yrs  <b>Local Education Authority:</b> Lancashire  <b>Religious Character:</b> None  <b>Admission Policy:</b> Selective</p>	3.79 miles

**Disclaimer:** The information represented in this section has been sourced from the Department of Education's 2019 results data and is based on the property's postcode.



### Percentage of pupils achieving 5+ A\*-C/9-4 or equivalents including 9-4 in both English and mathematics GCSEs

	Name	2019	2018	2017	2016
4	Morecambe Road School	0.0 %	0.0 %	0.0 %	0.0 %
	Morecambe Bay Academy	N/A	N/A	N/A	N/A
	Morecambe Community High School	58.0 %	54.0 %	50.0 %	50.0 %
	The Loyne Specialist School	N/A	N/A	N/A	N/A
	Lancaster Girls' Grammar School	97.0 %	98.0 %	100.0 %	99.0 %
	<b>Lancashire</b>	<b>66.0 %</b>	<b>66.1 %</b>	<b>61.7 %</b>	<b>58.5 %</b>
	<b>National</b>	<b>60.0 %</b>	<b>59.4 %</b>	<b>56.6 %</b>	<b>53.5 %</b>

**Disclaimer:** The information represented in this section has been sourced from the Department of Education's 2017 results data set and is based on the property's postcode.

### Average number of GCSE entries per pupil

	Name	Number
4	Morecambe Road School	1.2
	Morecambe Bay Academy	N/A
	Morecambe Community High School	6.9
	The Loyne Specialist School	N/A
	Lancaster Girls' Grammar School	9.8
	<b>Lancashire</b>	<b>7.5</b>
	<b>National</b>	<b>7.1</b>

**Disclaimer:** The information represented in this section has been sourced from the Department of Education's 2019 results data set and is based on the property's postcode.





	Key Stage 5 - Information	Approx Distance
	<p><b>Name:</b> Bay Leadership Academy  <b>Address:</b> Limes Avenue, Morecambe, LA3 1HS  <b>Contact Number:</b> 01524416830  <b>Age Range:</b> 11-18 yrs  <b>Local Education Authority:</b> Lancashire  <b>Religious Character:</b> Does not apply</p>	1.58 miles
	<p><b>Name:</b> Morecambe Community High School  <b>Address:</b> Dallam Avenue, Morecambe, LA4 5BG  <b>Contact Number:</b> 01524410207  <b>Age Range:</b> 11-18 yrs  <b>Local Education Authority:</b> Lancashire  <b>Religious Character:</b> Does not apply</p>	3.09 miles
	<p><b>Name:</b> Lancaster and Morecambe College  <b>Address:</b> Morecambe Road, Lancaster, LA1 2TY  <b>Contact Number:</b> 0152466215  <b>Age Range:</b> 16+ yrs  <b>Local Education Authority:</b> Lancashire  <b>Religious Character:</b> Does not apply  <b>Admission Policy:</b> Not applicable</p>	3.25 miles
	<p><b>Name:</b> Lancaster Girls' Grammar School  <b>Address:</b> Regent Street, Lancaster, LA1 1SF  <b>Contact Number:</b> 01524581661  <b>Age Range:</b> 11-18 yrs  <b>Local Education Authority:</b> Lancashire  <b>Religious Character:</b> None  <b>Admission Policy:</b> Selective</p>	3.79 miles
	<p><b>Name:</b> Ripley St Thomas Church of England Academy  <b>Address:</b> Ashton Road, Lancaster, LA1 4RS  <b>Contact Number:</b> 0152464496  <b>Age Range:</b> 11-18 yrs  <b>Local Education Authority:</b> Lancashire  <b>Religious Character:</b> Church of England</p>	3.81 miles

**Disclaimer:** The information represented in this section has been sourced from the Department of Education's 2019 results data and is based on the property's postcode.



**Percentage of A level students achieving at least three levels at grades AAB or better, at least two of which are in facilitating subjects**

	Name	%
5	Bay Leadership Academy	N/A
	Morecambe Community High School	6.1 %
	Lancaster and Morecambe College	N/A
	Lancaster Girls' Grammar School	46.9 %
	Ripley St Thomas Church of England Academy	6.1 %
	<b>Lancashire</b>	<b>15.1 %</b>
	<b>National</b>	<b>16.5 %</b>

**Disclaimer:** The information represented in this section has been sourced from the Department of Education's 2019 results data set and is based on the property's postcode.

As well as actual pupil performance in tests and exams, an important Key Performance Indicator is that of Value Added. When pupils start a school, they all have varying levels of ability and social advantage. A school's Value Added score measures how much progress they have made from the beginning to the end of their compulsory secondary education (i.e. between the end of Key Stage 2 and the end of Key Stage 4). It is a quick measurement of the effect of a school on its pupils.

	Name	Value Added
5	Bay Leadership Academy	-0.5
	Morecambe Community High School	-0.5
	Lancaster and Morecambe College	N/A
	Lancaster Girls' Grammar School	0.0
	Ripley St Thomas Church of England Academy	-0.1



**Farrell Heyworth** 3-7 Victoria Street, Morecambe, LA4 4AE 01524 832929





Everything you want  
to know about  
local health services





### How local are the health services?

We all want good access to local health facilities, wherever we live. To see how well **Cherry Tree Close** is served, we have set out below the exact locations of hospitals, Accident & Emergency centres, GPs, pharmacies, dentists, out-of-hours medical care and walk-in clinics. Where it's available, you will find more detailed information, including the names of practitioners and their contact details.

	Hospitals	Approx Distance
	Royal Lancaster Infirmary, Ashton Road, Lancaster, Lancashire, LA1 4RP	3.95 miles
	Furness General Hospital, Dalton Lane, Barrow-In-Furness, Cumbria, LA14 4LF	14.27 miles
	Blackpool Victoria Hospital, Whinney Heys Road, Blackpool, Lancashire, FY3 8NR	15.9 miles
	Royal Preston Hospital, Sharoe Green Lane North, Preston, Lancashire, PR2 9HT	18.8 miles
	Westmorland General Hospital, Kendal, LA9 7RG	19.58 miles
	A&E	Approx Distance
	Royal Lancaster Infirmary, Ashton Road, Lancaster, Lancashire, LA1 4RP	3.95 miles
	Furness General Hospital, Dalton Lane, Barrow-In-Furness, Cumbria, LA14 4LF	14.27 miles
	Blackpool Victoria Hospital, Whinney Heys Road, Blackpool, Lancashire, FY3 8NR	15.9 miles
	Royal Preston Hospital, Sharoe Green Lane North, Preston, Lancashire, PR2 9HT	18.8 miles
	Royal Blackburn Hospital, Haslingden Road, Blackburn, Lancashire, BB2 3HH	27.27 miles



	Walk-in Clinics	Approx Distance
	Same Day Health Centre – Morecambe, Same Day Health Centre, Morecambe, Lancashire, LA4 5LY	2.72 miles
	Same Day Health Centre – Fleetwood, Same Day Health Centre, Fleetwood, Lancashire, FY7 6HP	9.42 miles
	Blackpool Victoria Hospital, Whinney Heys Road, Blackpool, Lancashire, FY3 8NR	15.9 miles
	Blackpool Nhs Walk-in Centre, Whitegate Health Centre, Blackpool, Lancashire, FY3 9ES	16.65 miles
	Westmorland General Hospital, Kendal, LA9 7RG	19.58 miles
	GPs	Approx Distance
	STRAWBERRY GARDENS MEDICAL PRACTICE, HEYSHAM PRIMARY CARE CTR, LANCASHIRE, LA3 2LE	1.29 miles
	THE WESTGATE MED PRACTICE, THE WESTGATE MED PRACTICE, MORECAMBE, LANCASHIRE, LA4 4UZ	2.19 miles
	YORK BRIDGE SURGERY, YORK BRIDGE SURGERY, LANCASHIRE, LA4 5TE	2.64 miles
	COASTAL MEDICAL GROUP, COASTAL MEDICAL GROUP, LA4 5LY	2.73 miles
	KING STREET SURGERY, KING STREET SURGERY, LA1 1RE	3.87 miles
	Dental Surgeons	Approx Distance
	Mayo Dental Clinic, 3 Meeting House Lane, LANCASTER, Lancashire, LA1 1TJ	3.73 miles
	Mayo Dental Clinic, Dallas Road, LANCASTER, Lancashire, LA1 1TW	3.73 miles
	Central Dental Practice, Telephone House, LANCASTER, Lancashire, LA1 1AB	3.77 miles
	Bay Dental Partnership, 6 New Street, LANCASTER, Lancashire, LA1 1EG	3.87 miles
	Marketgate Dental Practice, Marketgate Shopping Centre, LANCASTER, Lancashire, LA1 1JF	3.9 miles

**Disclaimer:** The information represented in this section has been sourced from Experian and is based on the property's postcode.



**Farrell Heyworth** 3-7 Victoria Street, Morecambe, LA4 4AE 01524 832929



Everything you want  
to know about  
local policing







### Understanding who polices your neighbourhood

When you move to a new area, you want to know the arrangements for local community policing. See below for essential information about police services near to **Cherry Tree Close**. We have included location and contact details for the police station and wherever possible, details of police officers assigned to the area.

#### Your policing neighbourhood

The name of your policing neighbourhood is **Heysham South** and it has a population of **7264**.

Your Local Policing Team			
Name	Rank	Tel No.	E-mail
Dennis Nelson	PCSO		
Hannah Mason	PCSO		
Andy Blayden-Byrne	PCSO		
Zac Holmes	Constable		

**Disclaimer:** The information represented in this section has been sourced from data.police.uk.

#### Locations of Interest

Morecambe Police Station  
 station  
 Poulton Square Morecambe

Morecambe Police Station is open 09:00 to 17:00 Monday to Friday, Closed Saturday and Sunday

**Disclaimer:** The information represented in this section has been sourced from data.police.uk.

---



**Farrell Heyworth** 3-7 Victoria Street, Morecambe, LA4 4AE **01524 832929**

