



Everything you need to know about:

Hall Lane,  
Mawdesley, Ormskirk,  
L40 2QZ



**Introduction**



**The Property**



**Local Authority**



**Transport Links**

**Education**



**Health**



**Local Policing**





### An invaluable insight into your new home

This i-PACK brochure offers an informed overview of **Hall Lane** as a potential new home, along with essential material about its surrounding area and its local community. It provides a valuable insight for any prospective owner or tenant.

We wanted to provide you with information that you can absorb quickly, so we have presented it as visually as possible, making use of maps, icons, tables, graphs and charts. Overall, the brochure contains information about:

- **The Property** - including property details, floor plans, room details, photographs and Energy Performance Certificate.
- **Transport** - including locations of bus and coach stops, railway stations and ferry ports.
- **Health** - including locations, contact details and organisational information on the nearest GPs, pharmacies, hospitals and dentists.
- **Local Policing** - including locations, contact details and information about local community policing and the nearest police station, as well as police officers assigned to the area.
- **Education** - including locations of infant, primary and secondary schools and Key Performance Indicators (KPIs) for each key stage.



**Farrell Heyworth** 13/15 Cleveland Street, Chorley, PR7 1BH **01257 275231**



HALL LANE, ORMSKIRK £425,000



**x4**  
Bedrooms

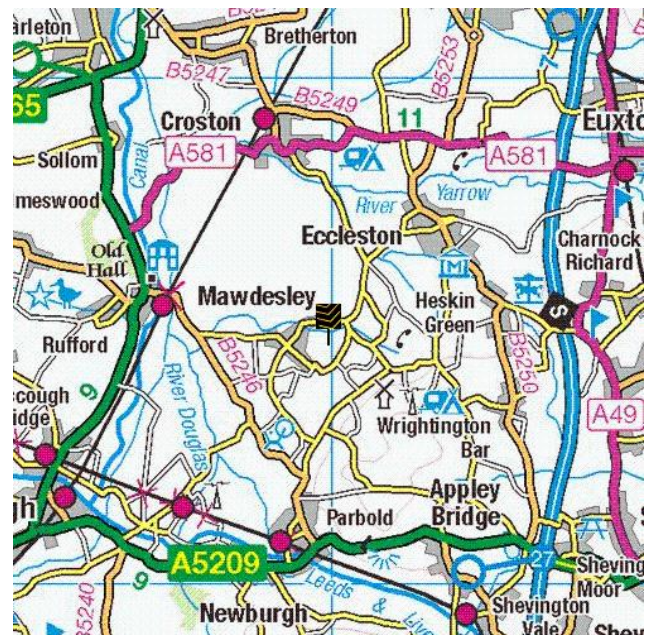
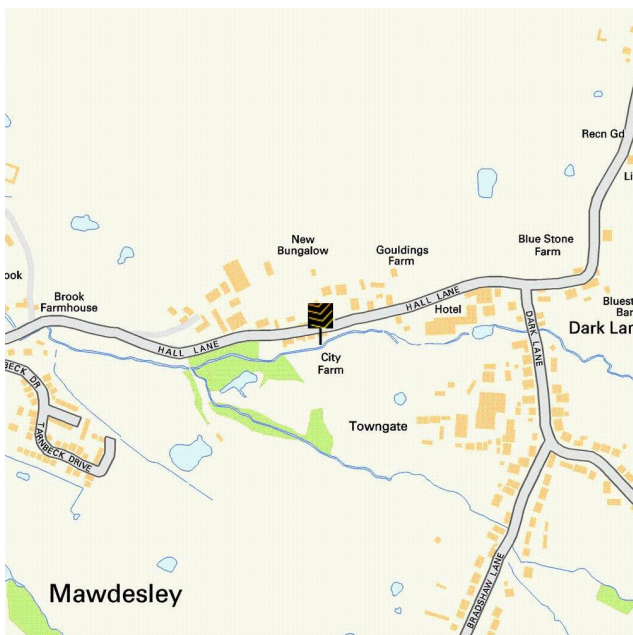


**x0**  
Living Rooms



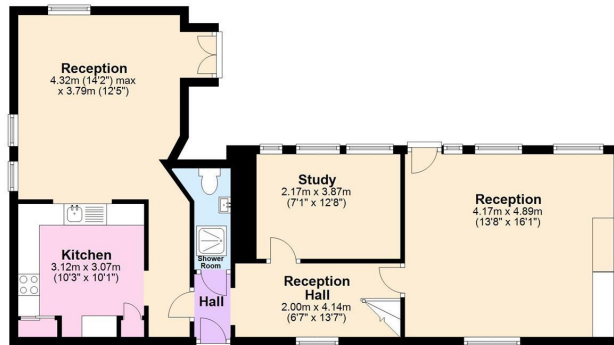
**x1**  
Bathrooms

## Where you are









Ground Floor



First Floor





Everything you want  
to know about  
local authorities







**Get to know your local authorities**

Local government directly affects quality of life, particularly when it comes to council tax, planning, waste disposal and the impact of local policies. You may want to investigate how this is likely to affect you if you decide to move. There are nearly 400 local authorities in England, with five different types of local government structure. These can be broadly divided into **single-tier** and **two-tier authorities**.

Single-tier authorities are **Metropolitan Authorities**, **London Boroughs** and **Unitary** or **Shire Authorities**.

Two-tier authorities have both a **County Council**, and a **District Council** or **City Council**.

There are also around 10,000 parish and town councils, effectively creating an additional tier in some areas - mostly, but not exclusively, in rural areas. The National Association of Local Councils (NALC) represents and works on behalf of these community councils and is a useful contact point.

The local authority locations and contact details for **Hall Lane** are:

Shire / County / District	Website	Address	Contact details
---------------------------	---------	---------	-----------------

**Disclaimer:** The information displayed above has been obtained using the property's postcode in proximity to its local authority. It is recommended that this information is independently verified.



Everything you want  
to know about  
transport links

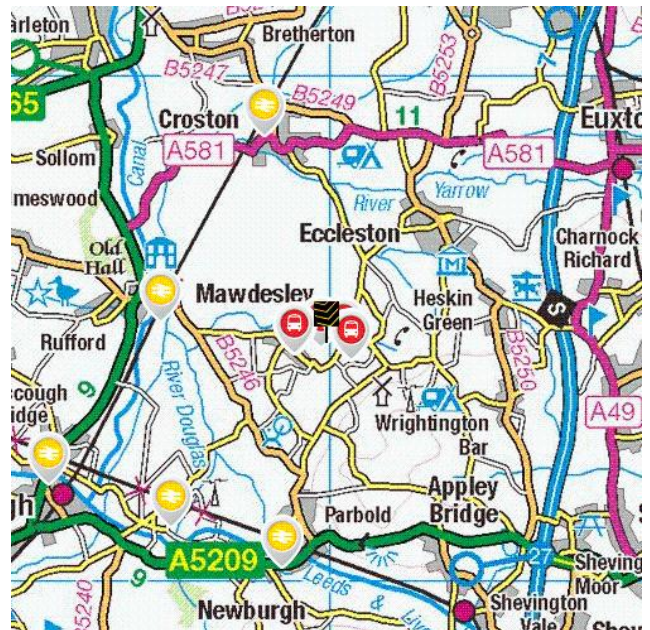
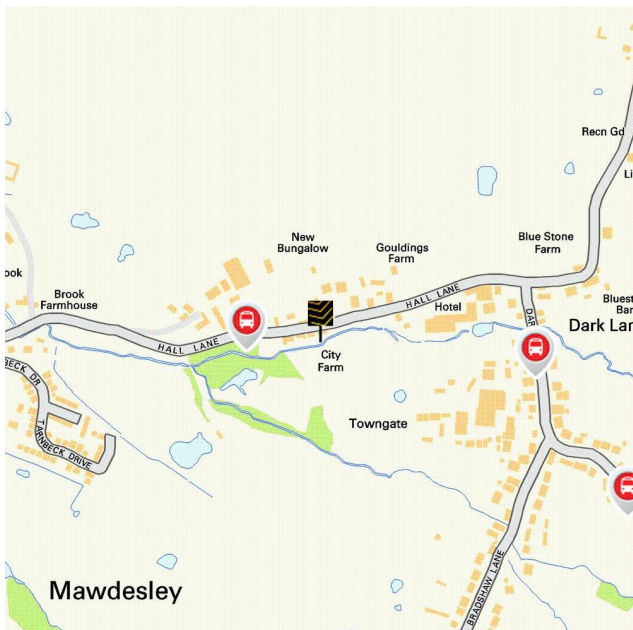





**Become familiar with public transport links**

Being able to choose to travel by public transport is important for many reasons. It helps to reduce congestion, provides access to work and education, and facilitates use of health and leisure facilities. If you or your family members travel abroad, access to the nearest ferry terminals is also likely to be a significant factor in choosing a new property. Using the maps below, you can pinpoint the precise locations of transport links for **Hall Lane**. Tables for each type of transport indicate the property's distance from the nearest bus stops, railway stations, coach stops and ferry terminals (providing that these facilities are within the scale proximity of the maps.)

**Transport Links**



	Airports	Approx Distance
	Blackpool International Airport	15.44 miles
	Liverpool John Lennon Airport	20.58 miles
	Manchester Airport	27.25 miles
	Leeds Bradford International Airport	47.77 miles
	Ferry ports	Approx Distance
	Liverpool Belfast Ferry Terminal Bootle	16.42 miles
	Liverpool Isle of Man & Dublin Terminal	18.35 miles
	Liverpool Pier Head Ferry Terminal	18.35 miles
	Seacombe Ferry Terminal	18.54 miles
	Birkenhead Ferry Terminal	18.99 miles
	Train Stations	Approx Distance
	Rufford Rail Station	2.05 miles
	Croston Rail Station	2.71 miles
	Parbold Rail Station	2.77 miles
	Hoscar Rail Station	2.93 miles
	Burscough Bridge Rail Station	3.8 miles

**Disclaimer:** The information represented in this section has been sourced from the Department of Transport's Open Data and is based on the property's postcode. It is recommended that this information is independently verified.



**Farrell Heyworth** 13/15 Cleveland Street, Chorley, PR7 1BH 01257 275231

	Bus Stops	Approx Distance
	Black Bull	0.07 miles
	Dark Lane	0.21 miles
	Ridley Lane	0.35 miles
	Post Office	0.4 miles
	Post Office	0.4 miles
	Coach Stops	Approx Distance
	Chorley Interchange	5.54 miles
	Ormskirk Bus Station	6.7 miles
	Wigan Bus Station	7.68 miles
	Preston Bus Station	9.39 miles
	Freckleton Coach Stop	9.69 miles

**Disclaimer:** The information represented in this section has been sourced from the Department of Transport's Open Data and is based on the property's postcode. It is recommended that this information is independently verified.



**Farrell Heyworth** 13/15 Cleveland Street, Chorley, PR7 1BH **01257 275231**



Everything you want  
to know about  
local schools



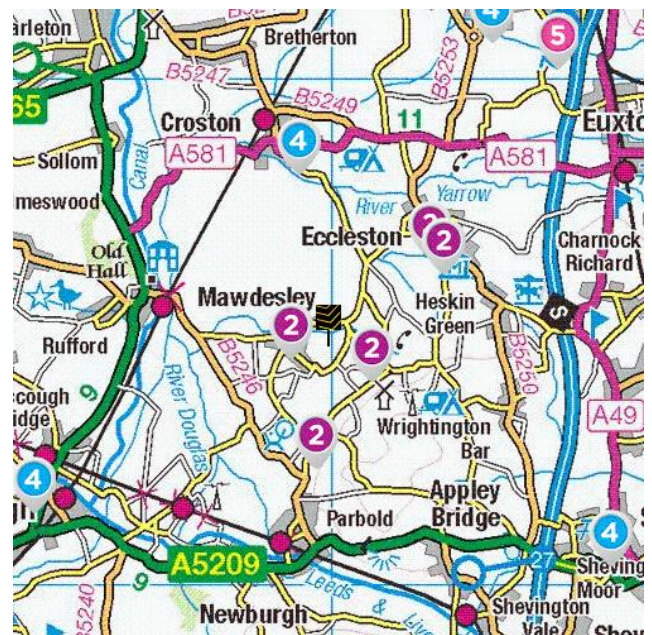
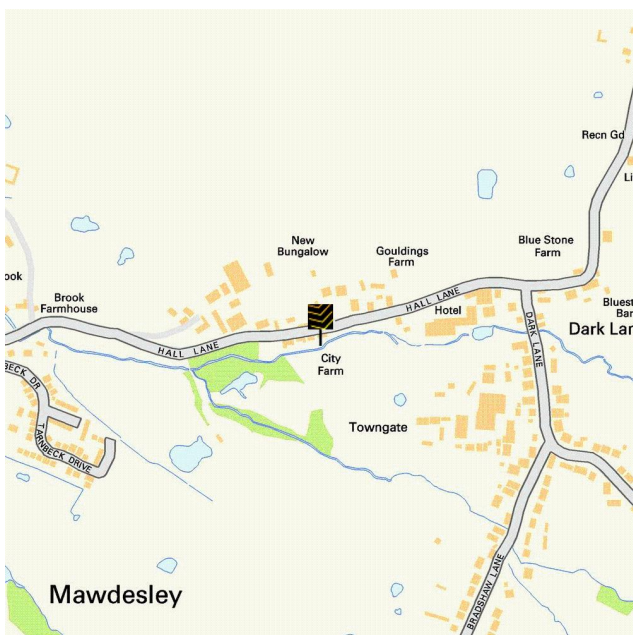


### How are local schools performing?

If schools are important to you, then this section sets out the published Key Performance Indicators for schools near to your prospective new home. Key Performance Indicators look primarily at how well pupils perform in their tests and examinations, as well as some other measures like attendance.

If you want to know more about a particular school or college, you can also visit the Ofsted website <http://www.ofsted.gov.uk/inspection-reports/find-inspection-report>

### Local Schools



The next page shows tables and charts divided into Key Stages and a list of respective schools local to **Hall Lane**. There are four main age-related Key Stages defined as:



Special schools are marked with this icon

Key Stage	Definition
<b>Key Stage 1</b>	Fits broadly with the first stage of education, i.e. ages 5-7.
<b>Key Stage 2</b>	Fits the later stage of primary education, often known as junior schools, i.e. ages 8-11. This takes pupils up to the standardised break at age 11 after which pupils generally change schools and transfer to secondary education.
<b>Key Stage 3</b>	Secondary education split between key stages 3 and 4, with key stage 3 covering ages 11-13.
<b>Key Stage 4</b>	Key Stage 4 (ages 14-16) covers the two year period of study for GCSE level examinations.
<b>Key Stage 5</b>	Beyond key stage 4 is 16+ or Sixth Form provision, sometimes unofficially referred to as Key Stage 5.



**Farrell Heyworth** 13/15 Cleveland Street, Chorley, PR7 1BH **01257 275231**



	Key Stage 2 - Information	Approx Distance
2	<p><b>Name:</b> Mawdesley St Peter's Church of England Primary School  <b>Address:</b> Hurst Green, Ormskirk, L40 2QT  <b>Contact Number:</b> 01704822657  <b>Age Range:</b> 5-11 yrs  <b>Local Education Authority:</b> Lancashire  <b>Religious Character:</b> Church of England</p>	0.47 miles
	<p><b>Name:</b> St Peter and Paul Catholic Primary School, Mawdesley  <b>Address:</b> Ridley Lane, Ormskirk, L40 3PP  <b>Contact Number:</b> 01704822216  <b>Age Range:</b> 4-11 yrs  <b>Local Education Authority:</b> Lancashire  <b>Religious Character:</b> Roman Catholic</p>	0.63 miles
	<p><b>Name:</b> Richard Durning's Endowed Primary School  <b>Address:</b> Chorley Road, Ormskirk, L40 3SL  <b>Contact Number:</b> 01257462968  <b>Age Range:</b> 3-11 yrs  <b>Local Education Authority:</b> Lancashire  <b>Religious Character:</b> Christian</p>	1.43 miles
	<p><b>Name:</b> Eccleston Primary School  <b>Address:</b> Doctors Lane, Chorley, PR7 5RA  <b>Contact Number:</b> 01257451114  <b>Age Range:</b> 4-11 yrs  <b>Local Education Authority:</b> Lancashire  <b>Religious Character:</b> Does not apply</p>	1.71 miles
	<p><b>Name:</b> Eccleston St Mary's Church of England Primary School  <b>Address:</b> The Green, Chorley, PR7 5TE  <b>Contact Number:</b> 01257451317  <b>Age Range:</b> 4-11 yrs  <b>Local Education Authority:</b> Lancashire  <b>Religious Character:</b> Church of England</p>	1.71 miles

**Disclaimer:** The information represented in this section has been sourced from the Department of Education's 2019 results data s and is based on the property's postcode.



**Farrell Heyworth** 13/15 Cleveland Street, Chorley, PR7 1BH **01257 275231**

## Reading, Writing and Maths

	Name	Expected	Higher
2	Mawdesley St Peter's Church of England Primary School	91.0 %	9.0 %
	St Peter and Paul Catholic Primary School, Mawdesley	N/A	N/A
	Richard Durning's Endowed Primary School	79.0 %	21.0 %
	Eccleston Primary School	90.0 %	17.0 %
	Eccleston St Mary's Church of England Primary School	83.0 %	17.0 %
	<b>Lancashire</b>	64.0 %	10.0 %
<b>National</b>	65.0 %	11.0 %	

## Primary Progress Measures

As well as actual pupil performance in tests and exams an important Key Performance Indicator is that of progress measures that compare the actual achievements of other pupils nationally with similar prior attainment. Any increase in attainment achieved by each pupil will be reflected in the schools progress scores. They are fairer to schools in challenging circumstances, as they recognise a school that is doing a good job with an intake with poor prior attainment

## Progress Measures for 2019

	Name	Math	Reading	Writing
2	Mawdesley St Peter's Church of England Primary School	-1.3 %	-2.5 %	1.1 %
	St Peter and Paul Catholic Primary School, Mawdesley	N/A	N/A	N/A
	Richard Durning's Endowed Primary School	1.6 %	4.3 %	2.2 %
	Eccleston Primary School	4.0 %	2.4 %	1.4 %
	Eccleston St Mary's Church of England Primary School	1.1 %	0.8 %	2.2 %

**Disclaimer:** The information represented in this section has been sourced from the Department of Education's 2019 results data set and is based on the property's postcode.



**Farrell Heyworth** 13/15 Cleveland Street, Chorley, PR7 1BH 01257 275231

	Key Stage 4 - Information	Approx Distance
4	<b>Name:</b> Bishop Rawstorne Church of England Academy <b>Address:</b> Highfield Road, Leyland, PR26 9HH <b>Contact Number:</b> 01772600349 <b>Age Range:</b> 11-16 yrs <b>Local Education Authority:</b> Lancashire <b>Religious Character:</b> Church of England	2.22 miles
	<b>Name:</b> Burscough Priory Academy <b>Address:</b> Trevor Road, Ormskirk, L40 7RZ <b>Contact Number:</b> 01704893259 <b>Age Range:</b> 11-16 yrs <b>Local Education Authority:</b> Lancashire <b>Religious Character:</b> Does not apply	4.11 miles
	<b>Name:</b> St Mary's Catholic High School <b>Address:</b> Royal Avenue, Leyland, PR25 1BS <b>Contact Number:</b> 01772421909 <b>Age Range:</b> 11-16 yrs <b>Local Education Authority:</b> Lancashire <b>Religious Character:</b> Roman Catholic	4.3 miles
	<b>Name:</b> Standish Community High School <b>Address:</b> Kenyon Road, Wigan, WN6 0NX <b>Contact Number:</b> 01257422265 <b>Age Range:</b> 11-16 yrs <b>Local Education Authority:</b> Wigan <b>Religious Character:</b> Does not apply	4.34 miles
	<b>Name:</b> Maharishi Free School <b>Address:</b> Cobbs Brow Lane, Ormskirk, L40 6JJ <b>Contact Number:</b> 01695729912 <b>Age Range:</b> 4-16 yrs <b>Local Education Authority:</b> Lancashire <b>Religious Character:</b> None	4.38 miles

**Disclaimer:** The information represented in this section has been sourced from the Department of Education's 2019 results data s and is based on the property's postcode.



**Farrell Heyworth** 13/15 Cleveland Street, Chorley, PR7 1BH **01257 275231**

**Percentage of pupils achieving 5+ A\*-C/9-4 or equivalents including 9-4 in both English and mathematics GCSEs**

	Name	2019	2018	2017	2016
4	Bishop Rawstorne Church of England Academy	89.0 %	91.0 %	85.0 %	85.0 %
	Burscough Priory Academy	76.0 %	N/A	N/A	N/A
	St Mary's Catholic High School	56.0 %	67.0 %	66.0 %	60.0 %
	Standish Community High School	85.0 %	N/A	N/A	N/A
	Maharishi Free School	65.0 %	50.0 %	50.0 %	60.0 %
	<b>Lancashire</b>	66.0 %	66.1 %	61.7 %	58.5 %
<b>National</b>	60.0 %	59.4 %	56.6 %	53.5 %	

**Disclaimer:** The information represented in this section has been sourced from the Department of Education's 2017 results data set and is based on the property's postcode.

**Average number of GCSE entries per pupil**

	Name	Number
4	Bishop Rawstorne Church of England Academy	8.5
	Burscough Priory Academy	8.0
	St Mary's Catholic High School	8.2
	Standish Community High School	7.3
	Maharishi Free School	8.7
	<b>Lancashire</b>	7.5
<b>National</b>	7.1	

**Disclaimer:** The information represented in this section has been sourced from the Department of Education's 2019 results data set and is based on the property's postcode.



	Key Stage 5 - Information	Approx Distance
	<p><b>Name:</b> Runshaw College  <b>Address:</b> Langdale Road, Leyland, PR25 3DQ  <b>Contact Number:</b> 01772622677  <b>Age Range:</b> 16+ yrs  <b>Local Education Authority:</b> Lancashire  <b>Religious Character:</b> Does not apply  <b>Admission Policy:</b> Not applicable</p>	4.47 miles
	<p><b>Name:</b> St John Rigby RC Sixth Form College  <b>Address:</b> Gathurst Road, Wigan, WN5 0LJ  <b>Contact Number:</b> 01942214797  <b>Age Range:</b> 16+ yrs  <b>Local Education Authority:</b> Wigan  <b>Religious Character:</b> Roman Catholic  <b>Admission Policy:</b> Not applicable</p>	5.81 miles
	<p><b>Name:</b> Ormskirk School  <b>Address:</b> Wigan Road, Ormskirk, L39 2AT  <b>Contact Number:</b> 01695583040  <b>Age Range:</b> 11-18 yrs  <b>Local Education Authority:</b> Lancashire  <b>Religious Character:</b> None</p>	6.4 miles
	<p><b>Name:</b> Hutton Church of England Grammar School  <b>Address:</b> Liverpool Road, Preston, PR4 5SN  <b>Contact Number:</b> 01772613112  <b>Age Range:</b> 11-18 yrs  <b>Local Education Authority:</b> Lancashire  <b>Religious Character:</b> Church of England</p>	7.12 miles
	<p><b>Name:</b> The Deanery Church of England High School and Sixth Form College  <b>Address:</b> Frog Lane, Wigan, WN1 1HQ  <b>Contact Number:</b> 01942768801  <b>Age Range:</b> 11-18 yrs  <b>Local Education Authority:</b> Wigan  <b>Religious Character:</b> Church of England</p>	7.54 miles

**Disclaimer:** The information represented in this section has been sourced from the Department of Education's 2019 results data set and is based on the property's postcode.



**Percentage of A level students achieving at least three levels at grades AAB or better, at least two of which are in facilitating subjects**

	Name	%
5	Runshaw College	16.3 %
	St John Rigby RC Sixth Form College	3.1 %
	Ormskirk School	12.8 %
	Hutton Church of England Grammar School	11.8 %
	The Deanery Church of England High School and Sixth Form College	4.5 %
	<b>Lancashire</b>	<b>15.1 %</b>
	<b>National</b>	<b>16.5 %</b>

**Disclaimer:** The information represented in this section has been sourced from the Department of Education's 2019 results data set and is based on the property's postcode.

As well as actual pupil performance in tests and exams, an important Key Performance Indicator is that of Value Added. When pupils start a school, they all have varying levels of ability and social advantage. A school's Value Added score measures how much progress they have made from the beginning to the end of their compulsory secondary education (i.e. between the end of Key Stage 2 and the end of Key Stage 4). It is a quick measurement of the effect of a school on its pupils.

	Name	Value Added
5	Runshaw College	0.0
	St John Rigby RC Sixth Form College	-0.1
	Ormskirk School	0.0
	Hutton Church of England Grammar School	0.2
	The Deanery Church of England High School and Sixth Form College	0.0



**Farrell Heyworth** 13/15 Cleveland Street, Chorley, PR7 1BH 01257 275231





Everything you want  
to know about  
local health services





### How local are the health services?

We all want good access to local health facilities, wherever we live. To see how well **Hall Lane** is served, we have set out below the exact locations of hospitals, Accident & Emergency centres, GPs, pharmacies, dentists, out-of-hours medical care and walk-in clinics. Where it's available, you will find more detailed information, including the names of practitioners and their contact details.

	Hospitals	Approx Distance
	Chorley And South Ribble Hospital, Chorley and South Ribble Hospital, Chorley, Lancashire, PR7 1PP	5.57 miles
	Ormskirk And District General Hospital, Ormskirk, Lancashire, L39 2AZ	6.49 miles
	Royal Albert Edward Infirmary, Wigan, Lancashire, WN1 2NN	7.27 miles
	Southport And Formby District General Hospital, Southport, Merseyside, PR8 6PN	9.02 miles
	Royal Preston Hospital, Sharoe Green Lane North, Preston, Lancashire, PR2 9HT	11.32 miles
	A&E	Approx Distance
	Chorley And South Ribble Hospital, Chorley and South Ribble Hospital, Chorley, Lancashire, PR7 1PP	5.57 miles
	Royal Albert Edward Infirmary, Wigan, Lancashire, WN1 2NN	7.27 miles
	Southport And Formby District General Hospital, Southport, Merseyside, PR8 6PN	9.02 miles
	Royal Preston Hospital, Sharoe Green Lane North, Preston, Lancashire, PR2 9HT	11.32 miles
	Aintree University Hospital, Aintree University Hospital, Liverpool, Merseyside, L9 7AL	13.34 miles



	Walk-in Clinics	Approx Distance
	The Skelmersdale Walk In Centre, 116-118 The Concourse, Skelmersdale, Lancashire, WN8 6LJ	5.58 miles
	Ormskirk And District General Hospital, Ormskirk, Lancashire, L39 2AZ	6.49 miles
	Knowsley Nhs Walk - In Centre, Kirkby, St Chads Clinic, Liverpool, Merseyside, L32 8RE	11.46 miles
	St Helens Nhs Walk-in Centre, Millenium Building, St. Helens, Merseyside, WA10 1DH	12.28 miles
	Darwen Health Care, Darwen Health Centre, Lancashire, BB3 1PY	12.58 miles
	GPs	Approx Distance
	DR BENNETT & DR BRADBURY'S SURGERY, THE HEALTH CENTRE, PR7 5RA	1.71 miles
	CROSTON VILLAGE SURGERY, CROSTON VILLAGE SURGERY, LEYLAND, PR26 9HJ	2.28 miles
	CROSTON MEDICAL CENTRE, CROSTON MEDICAL CENTRE, PR26 9HY	2.57 miles
	PARBOLD SURGERY, THE SURGERY, LANCASHIRE, WN8 7DN	2.65 miles
	BURSCOUGH FAMILY PRACTICE, BURSCOUGH HEALTH CENTRE, ORMSKIRK, LANCASHIRE, L40 4LA	3.86 miles
	Dental Surgeons	Approx Distance
	High Street Smiles, 107-109 High Street, WARRINGTON, Cheshire, WA3 3BZ	12.47 miles
	Mr Jm Kelly & Associates, 7A Stonecross Lane, WARRINGTON, Cheshire, WA3 2SA	12.95 miles
	L Askins, Woodgate, WARRINGTON, Cheshire, WA3 2QZ	13.31 miles
	Hob Hey Dental Practice, 3 Hob Hey Lane, WARRINGTON, Cheshire, WA3 4NQ	15.46 miles
	Talking Teeth, 493 Warrington Road, WARRINGTON, Cheshire, WA3 5QU	15.72 miles

**Disclaimer:** The information represented in this section has been sourced from Experian and is based on the property's postcode.



**Farrell Heyworth** 13/15 Cleveland Street, Chorley, PR7 1BH **01257 275231**



Everything you want  
to know about  
local policing





### Understanding who polices your neighbourhood

When you move to a new area, you want to know the arrangements for local community policing. See below for essential information about police services near to **Hall Lane**. We have included location and contact details for the police station and wherever possible, details of police officers assigned to the area.

#### Your policing neighbourhood

The name of your policing neighbourhood is **Chorley Rural West - Mawdesley** and it has a population of **1702**.

#### Your Local Policing Team

Name	Rank	Tel No.	E-mail
Sonia Prescott	Constable		
Maria Featherstone	PCSO		

**Disclaimer:** The information represented in this section has been sourced from data.police.uk.

#### Locations of Interest

Chorley Police Station  
station  
St Thomas Road Chorley

Chorley Police Station is open 09:00 to 17:00 Monday to Friday, 09:00 to 18:00 Saturday, Closed Sunday

**Disclaimer:** The information represented in this section has been sourced from data.police.uk.



**Farrell Heyworth** 13/15 Cleveland Street, Chorley, PR7 1BH **01257 275231**

