



Everything you need to know about:

**Argyle Street,
Barrow In Furness,
LA14 2EL**



Introduction



The Property



Local Authority



Transport Links

Education



Health



Local Policing





An invaluable insight into your new home

This i-PACK brochure offers an informed overview of **Argyle Street** as a potential new home, along with essential material about its surrounding area and its local community. It provides a valuable insight for any prospective owner or tenant.

We wanted to provide you with information that you can absorb quickly, so we have presented it as visually as possible, making use of maps, icons, tables, graphs and charts. Overall, the brochure contains information about:

- **The Property** - including property details, floor plans, room details, photographs and Energy Performance Certificate.
- **Transport** - including locations of bus and coach stops, railway stations and ferry ports.
- **Health** - including locations, contact details and organisational information on the nearest GPs, pharmacies, hospitals and dentists.
- **Local Policing** - including locations, contact details and information about local community policing and the nearest police station, as well as police officers assigned to the area.
- **Education** - including locations of infant, primary and secondary schools and Key Performance Indicators (KPIs) for each key stage.



Farrell Heyworth 76 Cavendish Street, Barrow In Furness, LA14 1PZ **01229 839090**



ARGYLE STREET, BARROW IN FURNESS £75,000



x2

Bedrooms



x2

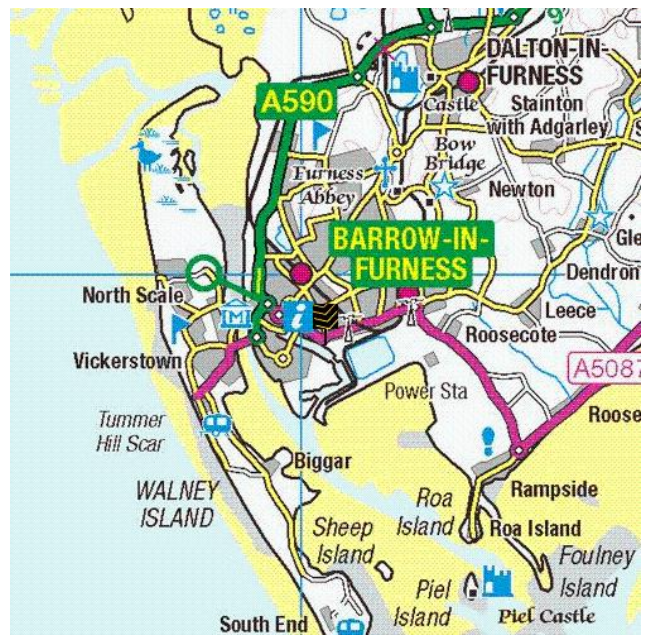
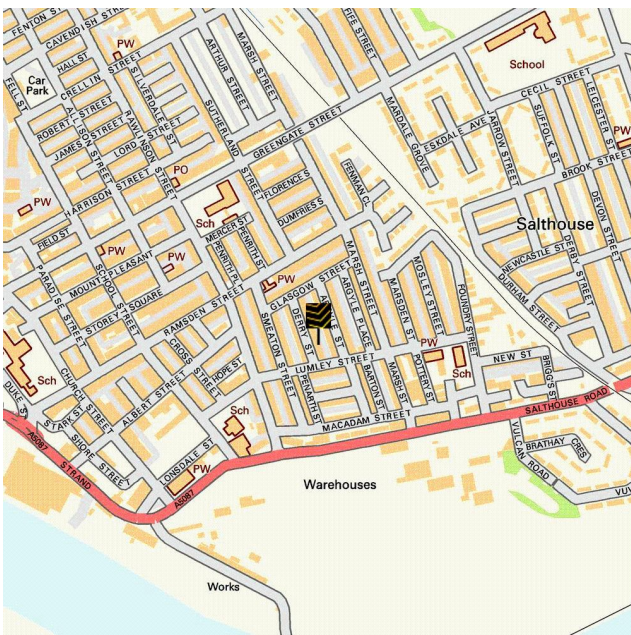
Living Rooms

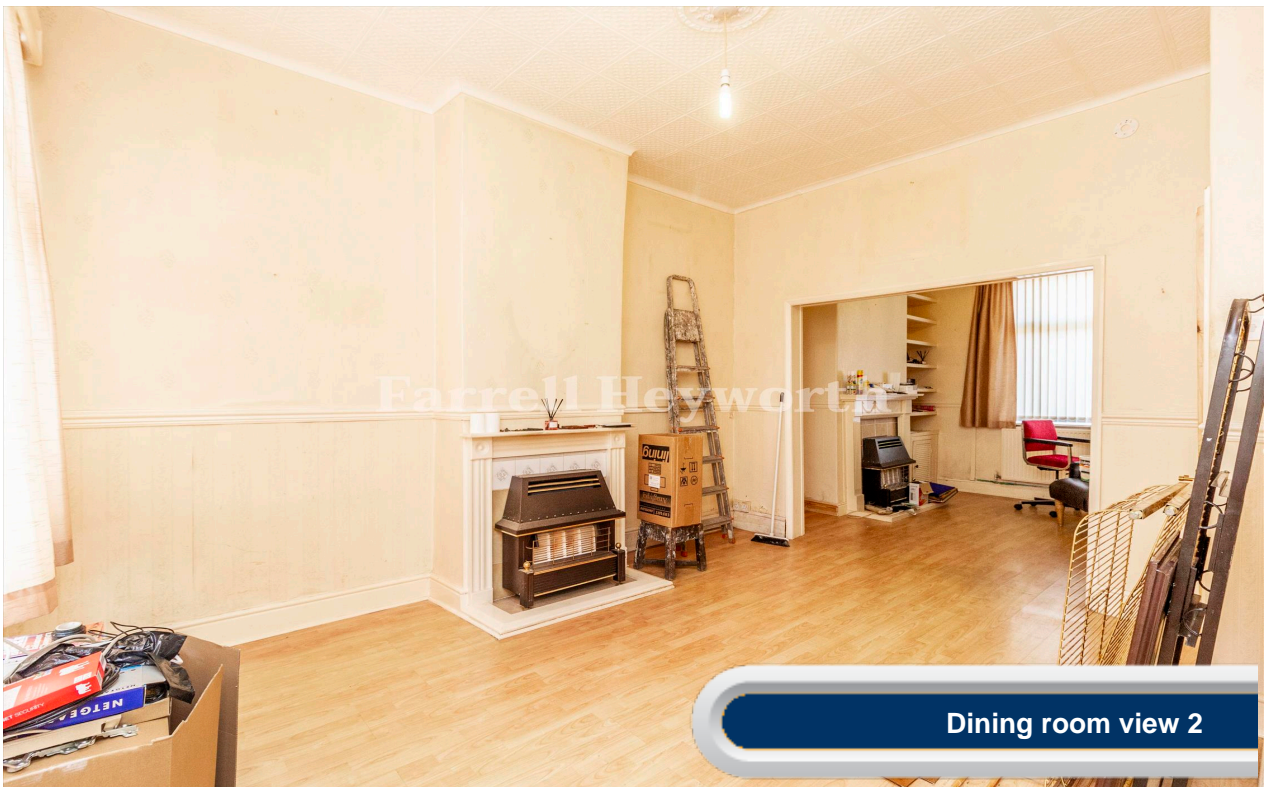
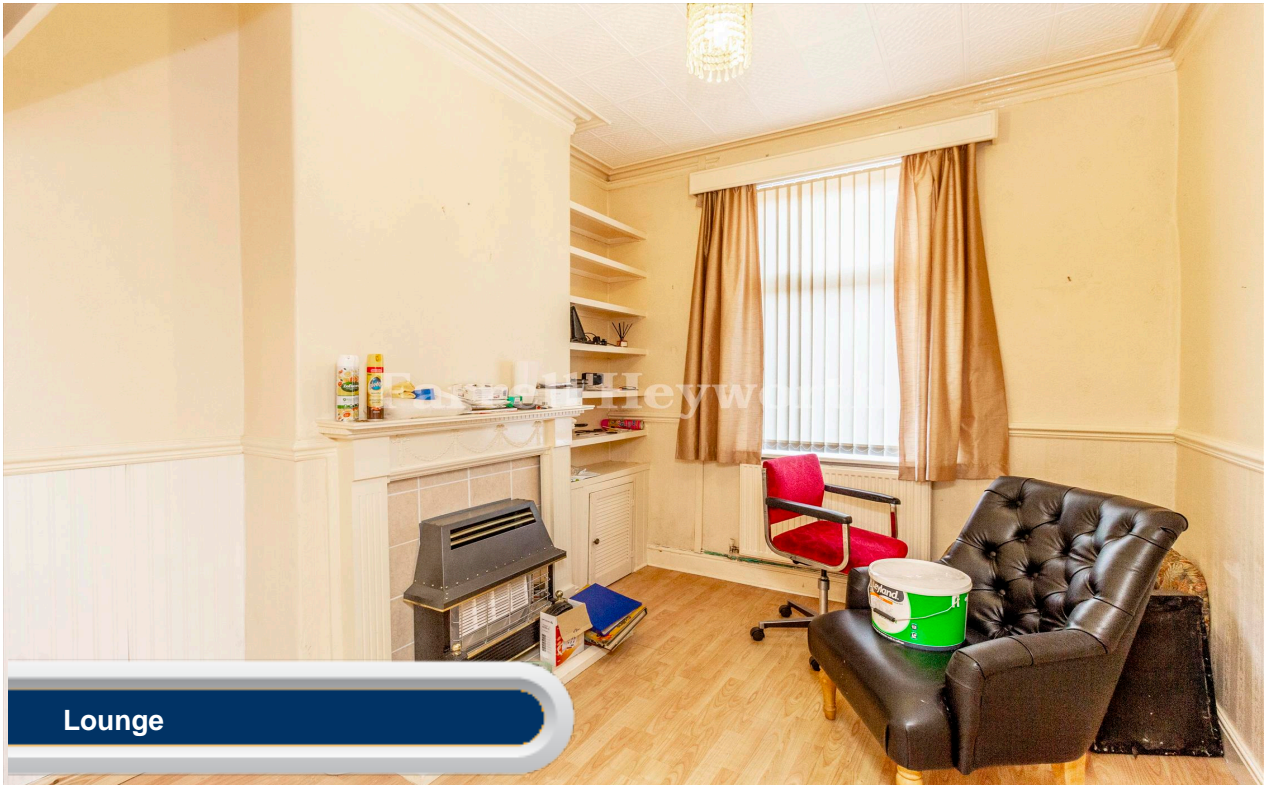


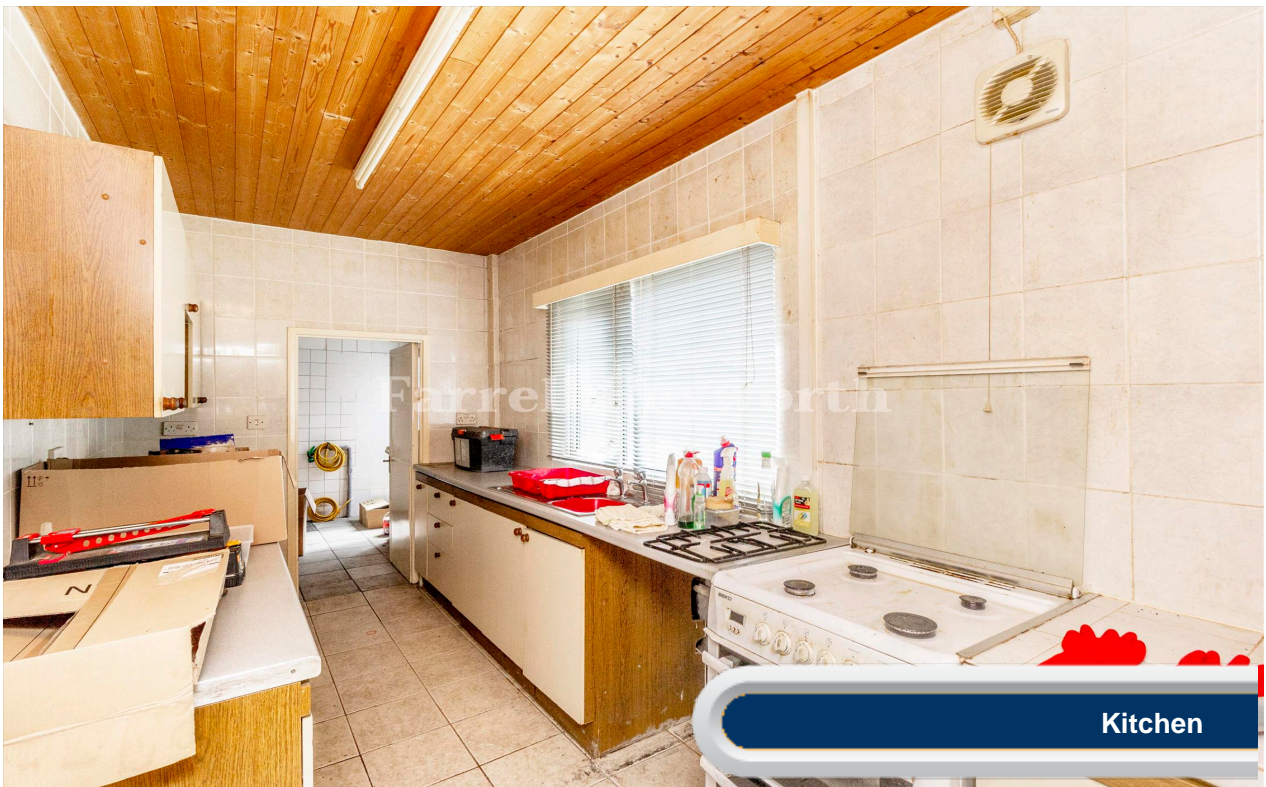
x1

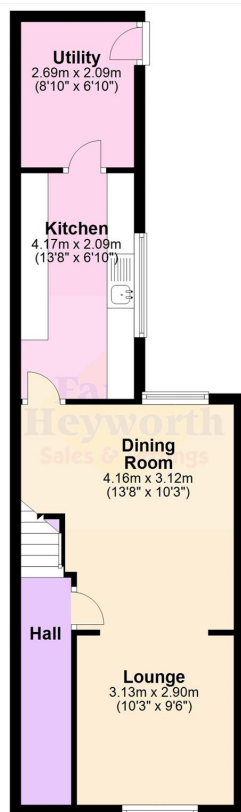
Bathrooms

Where you are

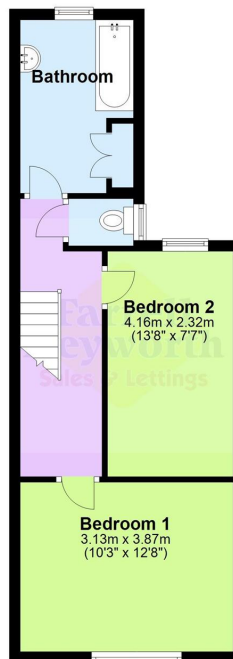








Ground Floor



First Floor





Everything you want
to know about
local authorities





Get to know your local authorities

Local government directly affects quality of life, particularly when it comes to council tax, planning, waste disposal and the impact of local policies. You may want to investigate how this is likely to affect you if you decide to move. There are nearly 400 local authorities in England, with five different types of local government structure. These can be broadly divided into **single-tier** and **two-tier authorities**.

Single-tier authorities are **Metropolitan Authorities, London Boroughs** and **Unitary or Shire Authorities**.

Two-tier authorities have both a **County Council**, and a **District Council or City Council**.

There are also around 10,000 parish and town councils, effectively creating an additional tier in some areas - mostly, but not exclusively, in rural areas. The National Association of Local Councils (NALC) represents and works on behalf of these community councils and is a useful contact point.

The local authority locations and contact details for **Argyle Street** are:

Shire / County / District	Website	Address	Contact details
---------------------------	---------	---------	-----------------

Disclaimer: The information displayed above has been obtained using the property's postcode in proximity to its local authority. It is recommended that this information is independently verified.



Everything you want
to know about
transport links

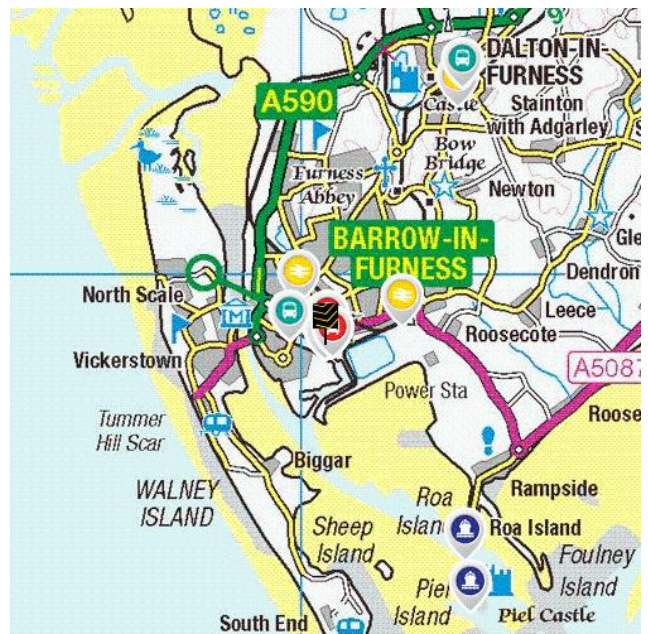
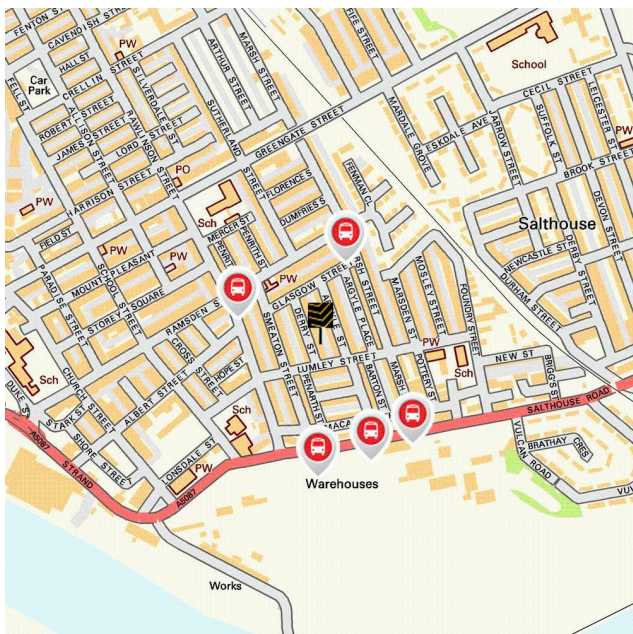







Become familiar with public transport links

Being able to choose to travel by public transport is important for many reasons. It helps to reduce congestion, provides access to work and education, and facilitates use of health and leisure facilities. If you or your family members travel abroad, access to the nearest ferry terminals is also likely to be a significant factor in choosing a new property. Using the maps below, you can pinpoint the precise locations of transport links for **Argyle Street**. Tables for each type of transport indicate the property's distance from the nearest bus stops, railway stations, coach stops and ferry terminals (providing that these facilities are within the scale proximity of the maps.)

Transport Links



	Airports	Approx Distance
	Blackpool International Airport	24.06 miles
	Ferry ports	Approx Distance
	Roa Island Ferry Landing	3.12 miles
	Piel Island Ferry Landing	3.69 miles
	Heysham Ferry Terminal	13.46 miles
	Lake Bank (Coniston) Ferry Landing	14.04 miles
	Water Park (Coniston) Ferry Landing	14.39 miles
	Train Stations	Approx Distance
	Barrow-in-Furness Rail Station	0.67 miles
	Roose Rail Station	0.98 miles
	Dalton Rail Station	3.39 miles
	Askam Rail Station	5.43 miles
	Millom Rail Station	7.24 miles

Disclaimer: The information represented in this section has been sourced from the Department of Transport's Open Data and is based on the property's postcode. It is recommended that this information is independently verified.



Farrell Heyworth 76 Cavendish Street, Barrow In Furness, LA14 1PZ **01229 839090**

	Bus Stops	Approx Distance
	Ramsden Street at Rawlinson Street	0.09 miles
	Marsh Street/Ramsden Street	0.09 miles
	Salthouse Road/Ruskin Terrace	0.12 miles
	Salthouse Road/Rawlinson Street	0.13 miles
	Marsh Street at Salthouse Road	0.13 miles
	Coach Stops	Approx Distance
	Barrow-in-Furness: Cornwallis St Coach Stop	0.45 miles
	Dalton in Furness: Tudor Square Coach Stop	3.61 miles
	Ulverston: Victoria Rd Bus Terminus	7.6 miles
	Grange-over-Sands: Rail Station Coach Stop	14.01 miles
	Morecambe: Central Drive Bus Station	14.31 miles

Disclaimer: The information represented in this section has been sourced from the Department of Transport's Open Data and is based on the property's postcode. It is recommended that this information is independently verified.



Farrell Heyworth 76 Cavendish Street, Barrow In Furness, LA14 1PZ **01229 839090**



Everything you want
to know about
local schools



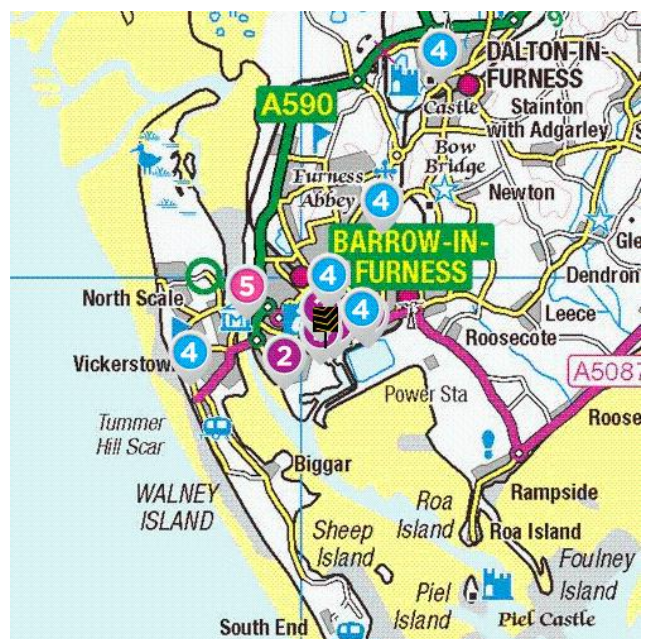
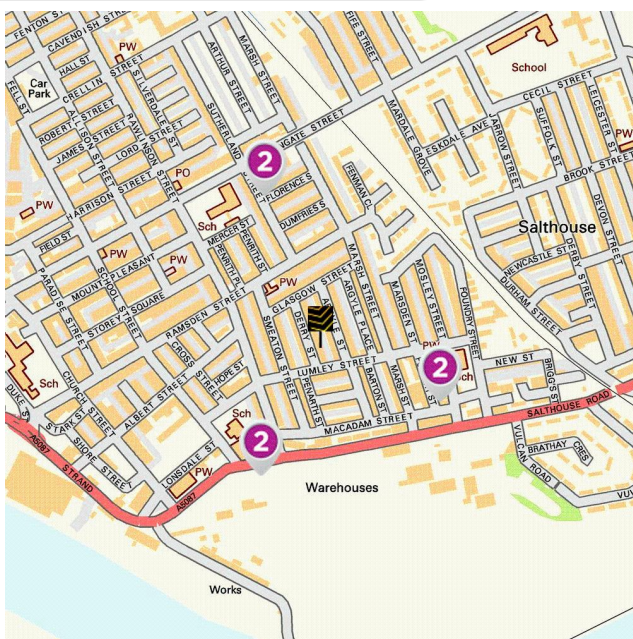


How are local schools performing?

If schools are important to you, then this section sets out the published Key Performance Indicators for schools near to your prospective new home. Key Performance Indicators look primarily at how well pupils perform in their tests and examinations, as well as some other measures like attendance.

If you want to know more about a particular school or college, you can also visit the Ofsted website <http://www.ofsted.gov.uk/inspection-reports/find-inspection-report>

Local Schools



The next page shows tables and charts divided into Key Stages and a list of respective schools local to **Argyle Street**. There are four main age-related Key Stages defined as:



Special schools are marked with this icon

Key Stage	Definition
Key Stage 1	Fits broadly with the first stage of education, i.e. ages 5-7.
Key Stage 2	Fits the later stage of primary education, often known as junior schools, i.e. ages 8-11. This takes pupils up to the standardised break at age 11 after which pupils generally change schools and transfer to secondary education.
Key Stage 3	Secondary education split between key stages 3 and 4, with key stage 3 covering ages 11-13.
Key Stage 4	Key Stage 4 (ages 14-16) covers the two year period of study for GCSE level examinations.
Key Stage 5	Beyond key stage 4 is 16+ or Sixth Form provision, sometimes unofficially referred to as Key Stage 5.



Farrell Heyworth 76 Cavendish Street, Barrow In Furness, LA14 1PZ **01229 839090**

	Key Stage 2 - Information	Approx Distance
	<p>Name: Sacred Heart Catholic Primary School Address: Lumley Street, Barrow-in-Furness, LA14 2BA Contact Number: 01229840940 Age Range: 2-11 yrs Local Education Authority: Cumbria Religious Character: Roman Catholic</p>	0.13 miles
	<p>Name: St George's CofE School Address: Salthouse Road, Barrow-in-Furness, LA14 2DX Contact Number: 01229841240 Age Range: 2-11 yrs Local Education Authority: Cumbria Religious Character: Church of England</p>	0.13 miles
	<p>Name: Greengate Junior School Address: Greengate Street, Barrow-in-Furness, LA14 1BG Contact Number: 01229812592 Age Range: 7-11 yrs Local Education Authority: Cumbria Religious Character: Does not apply</p>	0.17 miles
	<p>Name: Cambridge Primary School Address: Cambridge Street, Barrow-in-Furness, LA13 9RP Contact Number: 01229827761 Age Range: 2-11 yrs Local Education Authority: Cumbria Religious Character: Does not apply</p>	0.53 miles
	<p>Name: Barrow Island Community Primary School Address: Trinity Street, Barrow-in-Furness, LA14 2SJ Contact Number: 01229820302 Age Range: 4-11 yrs Local Education Authority: Cumbria Religious Character: Does not apply</p>	0.66 miles

Disclaimer: The information represented in this section has been sourced from the Department of Education's 2019 results data s and is based on the property's postcode.



Reading, Writing and Maths

	Name	Expected	Higher
2	Sacred Heart Catholic Primary School	50.0 %	8.0 %
	St George's CofE School	45.0 %	10.0 %
	Greengate Junior School	72.0 %	4.0 %
	Cambridge Primary School	70.0 %	7.0 %
	Barrow Island Community Primary School	65.0 %	5.0 %
	Cumbria	66.0 %	9.0 %
National	65.0 %	11.0 %	

Primary Progress Measures

As well as actual pupil performance in tests and exams an important Key Performance Indicator is that of progress measures that compare the actual achievements of other pupils nationally with similar prior attainment. Any increase in attainment achieved by each pupil will be reflected in the schools progress scores. They are fairer to schools in challenging circumstances, as they recognise a school that is doing a good job with an intake with poor prior attainment

Progress Measures for 2019

	Name	Math	Reading	Writing
2	Sacred Heart Catholic Primary School	-1.2 %	-0.9 %	0.7 %
	St George's CofE School	2.5 %	0.2 %	3.2 %
	Greengate Junior School	-0.1 %	-0.9 %	1.2 %
	Cambridge Primary School	0.6 %	0.5 %	1.0 %
	Barrow Island Community Primary School	0.7 %	-1.3 %	0.9 %

Disclaimer: The information represented in this section has been sourced from the Department of Education's 2019 results data set and is based on the property's postcode.



Farrell Heyworth 76 Cavendish Street, Barrow In Furness, LA14 1PZ 01229 839090

	Key Stage 4 - Information	Approx Distance
	Name: Moorfield Learning Centre Address: Moorfield Street, Barrow-in-Furness, LA13 9RS Contact Number: 01229837258 Age Range: 11-17 yrs Local Education Authority: Cumbria Religious Character: None	0.47 miles
	Name: Furness Academy Address: Park Drive, Barrow-in-Furness, LA13 9BB Contact Number: 01229484270 Age Range: 11-16 yrs Local Education Authority: Cumbria Religious Character: Does not apply	0.57 miles
	Name: St Bernard's Catholic High School Address: Rating Lane, Barrow-in-Furness, LA13 9LE Contact Number: 01229814560 Age Range: 11-16 yrs Local Education Authority: Cumbria Religious Character: Roman Catholic	1.63 miles
	Name: Walney School Address: Sandy Gap Lane, Barrow-in-Furness, LA14 3JT Contact Number: 01229471528 Age Range: 11-16 yrs Local Education Authority: Cumbria Religious Character: None	1.71 miles
	Name: Dowdales School Address: Dalton-in-Furness, LA15 8AH Contact Number: 01229469800 Age Range: 11-16 yrs Local Education Authority: Cumbria Religious Character: Does not apply	3.61 miles

Disclaimer: The information represented in this section has been sourced from the Department of Education's 2019 results data s and is based on the property's postcode.



Farrell Heyworth 76 Cavendish Street, Barrow In Furness, LA14 1PZ 01229 839090

Percentage of pupils achieving 5+ A*-C/9-4 or equivalents including 9-4 in both English and mathematics GCSEs

	Name	2019	2018	2017	2016
4	Moorfield Learning Centre	N/A	N/A	N/A	N/A
	Furness Academy	46.0 %	50.0 %	47.0 %	38.0 %
	St Bernard's Catholic High School	62.0 %	67.0 %	72.0 %	58.0 %
	Walney School	54.0 %	50.0 %	44.0 %	34.0 %
	Dowdales School	63.0 %	68.0 %	64.0 %	64.0 %
	Cumbria	64.0 %	65.3 %	62.8 %	56.7 %
	National	60.0 %	59.4 %	56.6 %	53.5 %

Disclaimer: The information represented in this section has been sourced from the Department of Education's 2017 results data set and is based on the property's postcode.

Average number of GCSE entries per pupil

	Name	Number
4	Moorfield Learning Centre	N/A
	Furness Academy	6.1
	St Bernard's Catholic High School	7.0
	Walney School	6.3
	Dowdales School	7.2
	Cumbria	7.4
	National	7.1

Disclaimer: The information represented in this section has been sourced from the Department of Education's 2019 results data set and is based on the property's postcode.



	Key Stage 5 - Information	Approx Distance
	<p>Name: Furness College Address: Channelside, Barrow-in-Furness, LA14 2PJ Contact Number: 01229825017 Age Range: 16+ yrs Local Education Authority: Cumbria Religious Character: Does not apply Admission Policy: Not applicable</p>	1.07 miles
	<p>Name: Ulverston Victoria High School Address: Springfield Road, Ulverston, LA12 0EB Contact Number: 01229483900 Age Range: 11-18 yrs Local Education Authority: Cumbria Religious Character: Does not apply</p>	7.32 miles
	<p>Name: Millom School Address: Salthouse Road, Millom, LA18 5AB Contact Number: 01229772300 Age Range: 11-18 yrs Local Education Authority: Cumbria Religious Character: Does not apply</p>	7.41 miles
	<p>Name: Bay Leadership Academy Address: Limes Avenue, Morecambe, LA3 1HS Contact Number: 01524416830 Age Range: 11-18 yrs Local Education Authority: Lancashire Religious Character: Does not apply</p>	14.13 miles
	<p>Name: Morecambe Community High School Address: Dallam Avenue, Morecambe, LA4 5BG Contact Number: 01524410207 Age Range: 11-18 yrs Local Education Authority: Lancashire Religious Character: Does not apply</p>	15.07 miles

Disclaimer: The information represented in this section has been sourced from the Department of Education's 2019 results data s and is based on the property's postcode.



Percentage of A level students achieving at least three levels at grades AAB or better, at least two of which are in facilitating subjects

	Name	%
5	Furness College	8.3 %
	Ulverston Victoria High School	16.3 %
	Millom School	20.0 %
	Bay Leadership Academy	N/A
	Morecambe Community High School	6.1 %
	Cumbria	16.5 %
National	16.5 %	

Disclaimer: The information represented in this section has been sourced from the Department of Education's 2019 results data set and is based on the property's postcode.

As well as actual pupil performance in tests and exams, an important Key Performance Indicator is that of Value Added. When pupils start a school, they all have varying levels of ability and social advantage. A school's Value Added score measures how much progress they have made from the beginning to the end of their compulsory secondary education (i.e. between the end of Key Stage 2 and the end of Key Stage 4). It is a quick measurement of the effect of a school on its pupils.

	Name	Value Added
5	Furness College	-0.2
	Ulverston Victoria High School	-0.2
	Millom School	-0.3
	Bay Leadership Academy	-0.5
	Morecambe Community High School	-0.5



Farrell Heyworth 76 Cavendish Street, Barrow In Furness, LA14 1PZ **01229 839090**



Everything you want
to know about
local health services








How local are the health services?

We all want good access to local health facilities, wherever we live. To see how well **Argyle Street** is served, we have set out below the exact locations of hospitals, Accident & Emergency centres, GPs, pharmacies, dentists, out-of-hours medical care and walk-in clinics. Where it's available, you will find more detailed information, including the names of practitioners and their contact details.

	Hospitals	Approx Distance
	Furness General Hospital, Dalton Lane, Barrow-In-Furness, Cumbria, LA14 4LF	1.82 miles
	Royal Lancaster Infirmary, Ashton Road, Lancaster, Lancashire, LA1 4RP	17.59 miles
	Blackpool Victoria Hospital, Whinney Heys Road, Blackpool, Lancashire, FY3 8NR	21.63 miles
	Westmorland General Hospital, Kendal, LA9 7RG	23.8 miles
	Royal Preston Hospital, Sharoe Green Lane North, Preston, Lancashire, PR2 9HT	30.26 miles
	A&E	Approx Distance
	Furness General Hospital, Dalton Lane, Barrow-In-Furness, Cumbria, LA14 4LF	1.82 miles
	Royal Lancaster Infirmary, Ashton Road, Lancaster, Lancashire, LA1 4RP	17.59 miles
	Blackpool Victoria Hospital, Whinney Heys Road, Blackpool, Lancashire, FY3 8NR	21.63 miles
	Royal Preston Hospital, Sharoe Green Lane North, Preston, Lancashire, PR2 9HT	30.26 miles
	West Cumberland Hospital, Homewood, Whitehaven, CA28 8JG	32.13 miles

	Walk-in Clinics	Approx Distance
	Same Day Health Centre – Morecambe, Same Day Health Centre, Morecambe, Lancashire, LA4 5LY	14.73 miles
	Same Day Health Centre – Fleetwood, Same Day Health Centre, Fleetwood, Lancashire, FY7 6HP	15.57 miles
	Blackpool Victoria Hospital, Whinney Heys Road, Blackpool, Lancashire, FY3 8NR	21.63 miles
	Blackpool Nhs Walk-in Centre, Whitegate Health Centre, Blackpool, Lancashire, FY3 9ES	21.87 miles
	Westmorland General Hospital, Kendal, LA9 7RG	23.8 miles
	GPs	Approx Distance
	DUKE STREET SURGERY, 4 DUKE STREET, LA14 1LF	0.3 miles
	LIVERPOOL HOUSE SURGERY, LIVERPOOL HOUSE SURGERY, CUMBRIA, LA13 9QY	0.35 miles
	RISEDALE SURGERY, RISEDALE SURGERY, CUMBRIA, LA13 9RX	0.4 miles
	BRIDGEGATE MEDICAL CENTRE, BRIDGEGATE MEDICAL CENTRE, CUMBRIA, LA13 9SH	0.44 miles
	ATKINSON HEALTH CENTRE (WIEJAK), ATKINSON HEALTH CENTRE, CUMBRIA, LA14 2LR	0.44 miles
	Dental Surgeons	Approx Distance
	Mayo Dental Clinic, 3 Meeting House Lane, LANCASTER, Lancashire, LA1 1TJ	17.24 miles
	Lancaster Dental Clinic, 8 Aldrens Lane, LANCASTER, Lancashire, LA1 2DU	17.28 miles
	Central Dental Practice, Telephone House, LANCASTER, Lancashire, LA1 1AB	17.29 miles
	Mayo Dental Clinic, Dallas Road, LANCASTER, Lancashire, LA1 1TW	17.29 miles
	Bay Dental Partnership, 6 New Street, LANCASTER, Lancashire, LA1 1EG	17.35 miles

Disclaimer: The information represented in this section has been sourced from Experian and is based on the property's postcode.



Farrell Heyworth 76 Cavendish Street, Barrow In Furness, LA14 1PZ **01229 839090**



Everything you want
to know about
local policing





Understanding who polices your neighbourhood

When you move to a new area, you want to know the arrangements for local community policing. See below for essential information about police services near to **Argyle Street**. We have included location and contact details for the police station and wherever possible, details of police officers assigned to the area.

Your policing neighbourhood

The name of your policing neighbourhood is **Salthouse, Newbarns and Roose** and it has a population of **0**.

Your Local Policing Team			
Name	Rank	Tel No.	E-mail
Gareth Jesson	\$teamMember.rank		
Joanne Smith	Sergeant		
John Dilks	Sergeant		
Martin Hayes	PC		
Jess Jones	PCSO		

Disclaimer: The information represented in this section has been sourced from data.police.uk.

Disclaimer: The information represented in this section has been sourced from data.police.uk.



Farrell Heyworth 76 Cavendish Street, Barrow, In Furness, LA14 1PZ **01229 839090**

