



Everything you need to know about:

Highlands Grove,  
Barrow In Furness,  
LA13 0AJ



**Introduction**



**The Property**



**Local Authority**



**Transport Links**

**Education**



**Health**



**Local Policing**







### An invaluable insight into your new home

This i-PACK brochure offers an informed overview of **Highlands Grove** as a potential new home, along with essential material about its surrounding area and its local community. It provides a valuable insight for any prospective owner or tenant.

We wanted to provide you with information that you can absorb quickly, so we have presented it as visually as possible, making use of maps, icons, tables, graphs and charts. Overall, the brochure contains information about:

- **The Property** - including property details, floor plans, room details, photographs and Energy Performance Certificate.
- **Transport** - including locations of bus and coach stops, railway stations and ferry ports.
- **Health** - including locations, contact details and organisational information on the nearest GPs, pharmacies, hospitals and dentists.
- **Local Policing** - including locations, contact details and information about local community policing and the nearest police station, as well as police officers assigned to the area.
- **Education** - including locations of infant, primary and secondary schools and Key Performance Indicators (KPIs) for each key stage.



**Farrell Heyworth** 76 Cavendish Street, Barrow In Furness, LA14 1PZ **01229 839090**





HIGHLANDS GROVE, BARROW IN FURNESS £270,000



**x3**  
Bedrooms

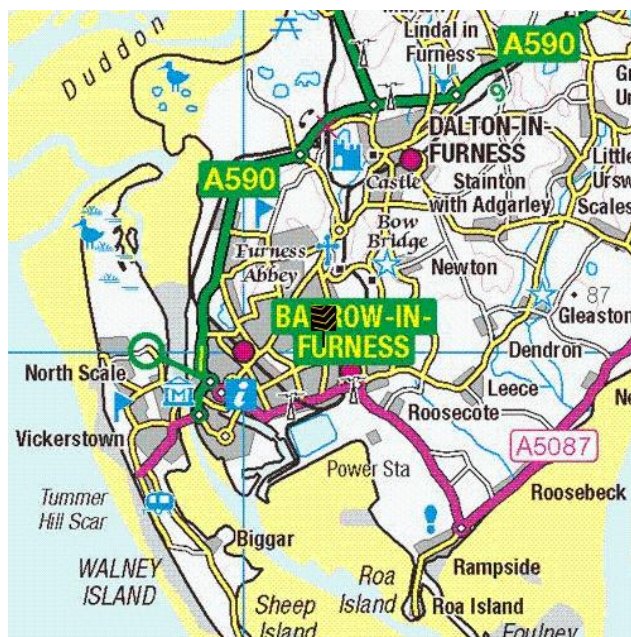


**x2**  
Living Rooms



**x1**  
Bathrooms

## Where you are

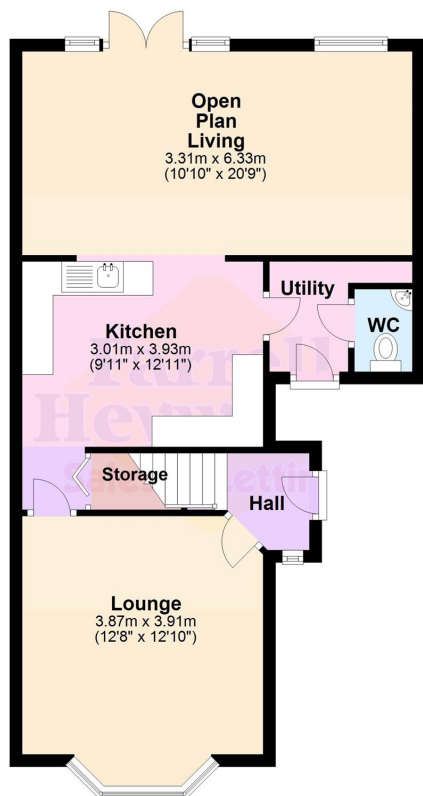




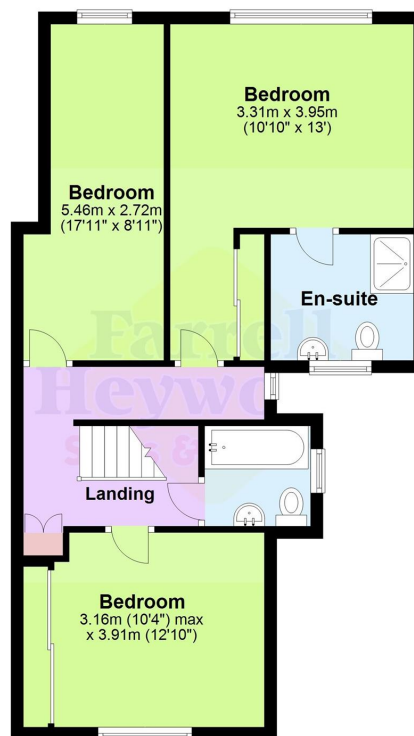








Ground Floor



First Floor







Everything you want  
to know about  
local authorities







**Get to know your local authorities**

Local government directly affects quality of life, particularly when it comes to council tax, planning, waste disposal and the impact of local policies. You may want to investigate how this is likely to affect you if you decide to move. There are nearly 400 local authorities in England, with five different types of local government structure. These can be broadly divided into **single-tier** and **two-tier authorities**.

Single-tier authorities are **Metropolitan Authorities**, **London Boroughs** and **Unitary** or **Shire Authorities**.

Two-tier authorities have both a **County Council**, and a **District Council** or **City Council**.

There are also around 10,000 parish and town councils, effectively creating an additional tier in some areas - mostly, but not exclusively, in rural areas. The National Association of Local Councils (NALC) represents and works on behalf of these community councils and is a useful contact point.

The local authority locations and contact details for **Highlands Grove** are:

Shire / County / District	Website	Address	Contact details
---------------------------	---------	---------	-----------------

**Disclaimer:** The information displayed above has been obtained using the property's postcode in proximity to its local authority. It is recommended that this information is independently verified.



Everything you want  
to know about  
transport links



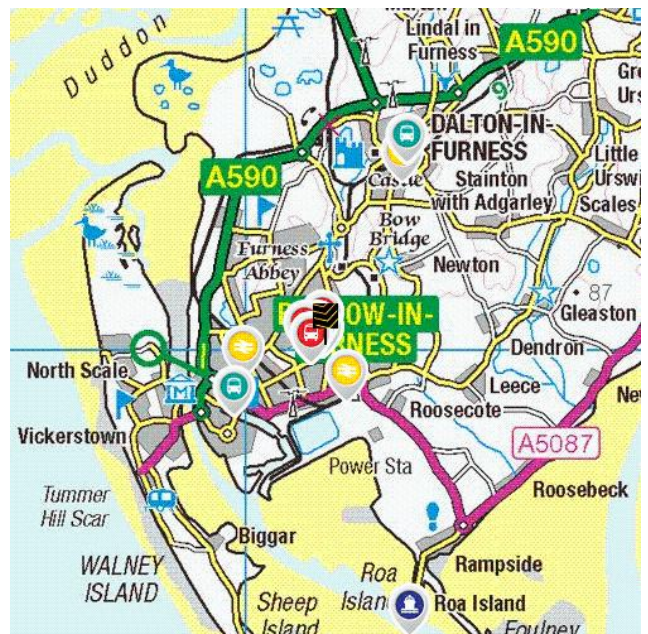







**Become familiar with public transport links**

Being able to choose to travel by public transport is important for many reasons. It helps to reduce congestion, provides access to work and education, and facilitates use of health and leisure facilities. If you or your family members travel abroad, access to the nearest ferry terminals is also likely to be a significant factor in choosing a new property. Using the maps below, you can pinpoint the precise locations of transport links for **Highlands Grove**. Tables for each type of transport indicate the property's distance from the nearest bus stops, railway stations, coach stops and ferry terminals (providing that these facilities are within the scale proximity of the maps.)

**Transport Links**



	Airports	Approx Distance
	Blackpool International Airport	24.78 miles
	Ferry ports	Approx Distance
	Roa Island Ferry Landing	3.68 miles
	Piel Island Ferry Landing	4.3 miles
	Lake Bank (Coniston) Ferry Landing	12.92 miles
	Heysham Ferry Terminal	13.27 miles
	Water Park (Coniston) Ferry Landing	13.27 miles
	Train Stations	Approx Distance
	Roose Rail Station	0.69 miles
	Barrow-in-Furness Rail Station	1.08 miles
	Dalton Rail Station	2.25 miles
	Askam Rail Station	4.46 miles
	Ulverston Rail Station	6.24 miles

**Disclaimer:** The information represented in this section has been sourced from the Department of Transport's Open Data and is based on the property's postcode. It is recommended that this information is independently verified.



**Farrell Heyworth** 76 Cavendish Street, Barrow In Furness, LA14 1PZ **01229 839090**



	Bus Stops	Approx Distance
	Rating Lane/Meadowlands Avenue	0.1 miles
	Harrel Lane terminus	0.11 miles
	Harrel Lane/Hollyoake Avenue	0.12 miles
	Harrel Lane/Hollow Lane	0.25 miles
	Middle Hill shelter	0.26 miles
	Coach Stops	Approx Distance
	Barrow-in-Furness: Cornwallis St Coach Stop	1.4 miles
	Dalton in Furness: Tudor Square Coach Stop	2.47 miles
	Ulverston: Victoria Rd Bus Terminus	6.45 miles
	Grange-over-Sands: Rail Station Coach Stop	13.03 miles
	Newby Bridge: Hotel Coach Stop	13.57 miles

**Disclaimer:** The information represented in this section has been sourced from the Department of Transport's Open Data and is based on the property's postcode. It is recommended that this information is independently verified.



**Farrell Heyworth** 76 Cavendish Street, Barrow In Furness, LA14 1PZ **01229 839090**



Everything you want  
to know about  
local schools





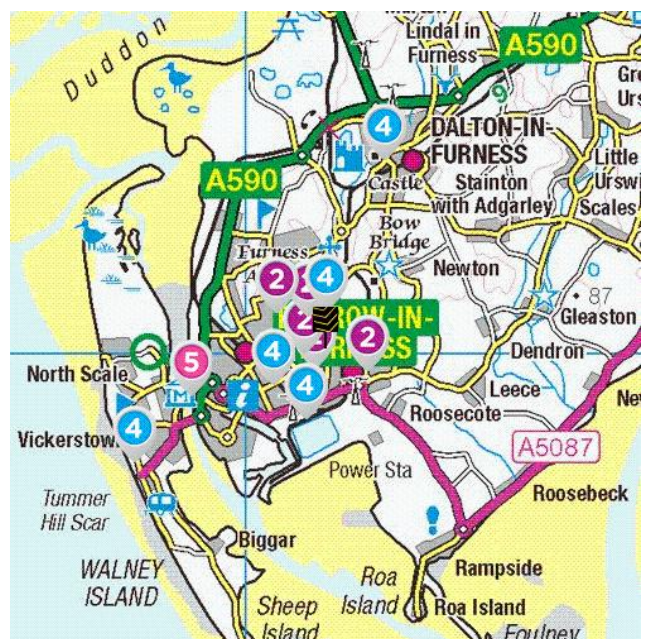
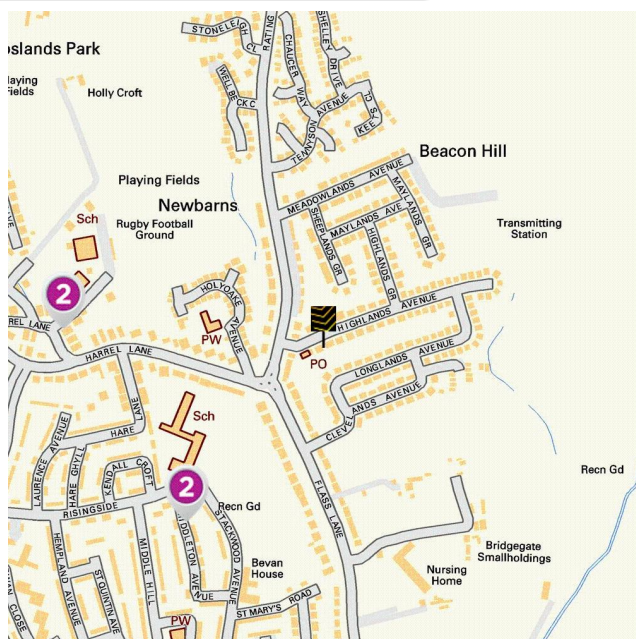


### How are local schools performing?

If schools are important to you, then this section sets out the published Key Performance Indicators for schools near to your prospective new home. Key Performance Indicators look primarily at how well pupils perform in their tests and examinations, as well as some other measures like attendance.

If you want to know more about a particular school or college, you can also visit the Ofsted website <http://www.ofsted.gov.uk/inspection-reports/find-inspection-report>

### Local Schools



The next page shows tables and charts divided into Key Stages and a list of respective schools local to **Highlands Grove**. There are four main age-related Key Stages defined as:



Special schools are marked with this icon

Key Stage	Definition
Key Stage 1	Fits broadly with the first stage of education, i.e. ages 5-7.
Key Stage 2	Fits the later stage of primary education, often known as junior schools, i.e. ages 8-11. This takes pupils up to the standardised break at age 11 after which pupils generally change schools and transfer to secondary education.
Key Stage 3	Secondary education split between key stages 3 and 4, with key stage 3 covering ages 11-13.
Key Stage 4	Key Stage 4 (ages 14-16) covers the two year period of study for GCSE level examinations.
Key Stage 5	Beyond key stage 4 is 16+ or Sixth Form provision, sometimes unofficially referred to as Key Stage 5.



**Farrell Heyworth** 76 Cavendish Street, Barrow In Furness, LA14 1PZ **01229 839090**



	Key Stage 2 - Information	Approx Distance
2	<p><b>Name:</b> Newbarns Primary &amp; Nursery School  <b>Address:</b> Rising Side, Barrow-in-Furness, LA13 9ET  <b>Contact Number:</b> 01229877442  <b>Age Range:</b> 3-11 yrs  <b>Local Education Authority:</b> Cumbria  <b>Religious Character:</b> Does not apply</p>	0.21 miles
	<p><b>Name:</b> Holy Family Catholic Primary School  <b>Address:</b> Ostley Bank, Barrow-in-Furness, LA13 9LR  <b>Contact Number:</b> 01229828018  <b>Age Range:</b> 3-11 yrs  <b>Local Education Authority:</b> Cumbria  <b>Religious Character:</b> Roman Catholic</p>	0.26 miles
	<p><b>Name:</b> Chetwynde School  <b>Address:</b> Rating Lane, Barrow-in-Furness, LA13 0NY  <b>Contact Number:</b> 01229824210  <b>Age Range:</b> 4-16 yrs  <b>Local Education Authority:</b> Cumbria  <b>Religious Character:</b> None</p>	0.52 miles
	<p><b>Name:</b> Yarlside Academy  <b>Address:</b> Red Oak Avenue, Barrow-in-Furness, LA13 0LH  <b>Contact Number:</b> 01229840930  <b>Age Range:</b> 3-11 yrs  <b>Local Education Authority:</b> Cumbria  <b>Religious Character:</b> Does not apply</p>	0.55 miles
	<p><b>Name:</b> St Paul's CofE Junior School  <b>Address:</b> Hawcoat Lane, Barrow-in-Furness, LA14 4HF  <b>Contact Number:</b> 01229822211  <b>Age Range:</b> 7-11 yrs  <b>Local Education Authority:</b> Cumbria  <b>Religious Character:</b> Church of England</p>	0.79 miles

**Disclaimer:** The information represented in this section has been sourced from the Department of Education's 2019 results data s and is based on the property's postcode.



Farrell Heyworth 76 Cavendish Street, Barrow In Furness, LA14 1PZ 01229 839090

## Reading, Writing and Maths

	Name	Expected	Higher
2	Newbarns Primary & Nursery School	63.0 %	8.0 %
	Holy Family Catholic Primary School	74.0 %	15.0 %
	Chetwynde School	76.0 %	14.0 %
	Yarlside Academy	97.0 %	31.0 %
	St Paul's CofE Junior School	46.0 %	0.0 %
	<b>Cumbria</b>	66.0 %	9.0 %
<b>National</b>	65.0 %	11.0 %	

## Primary Progress Measures

As well as actual pupil performance in tests and exams an important Key Performance Indicator is that of progress measures that compare the actual achievements of other pupils nationally with similar prior attainment. Any increase in attainment achieved by each pupil will be reflected in the schools progress scores. They are fairer to schools in challenging circumstances, as they recognise a school that is doing a good job with an intake with poor prior attainment

## Progress Measures for 2019

	Name	Math	Reading	Writing
2	Newbarns Primary & Nursery School	0.4 %	1.0 %	2.2 %
	Holy Family Catholic Primary School	1.0 %	1.3 %	2.7 %
	Chetwynde School	0.8 %	3.3 %	0.9 %
	Yarlside Academy	4.7 %	3.2 %	1.5 %
	St Paul's CofE Junior School	-2.3 %	-1.3 %	-0.3 %

**Disclaimer:** The information represented in this section has been sourced from the Department of Education's 2019 results data set and is based on the property's postcode.



Farrell Heyworth 76 Cavendish Street, Barrow In Furness, LA14 1PZ 01229 839090



	Key Stage 4 - Information	Approx Distance
4	<b>Name:</b> St Bernard's Catholic High School <b>Address:</b> Rating Lane, Barrow-in-Furness, LA13 9LE <b>Contact Number:</b> 01229814560 <b>Age Range:</b> 11-16 yrs <b>Local Education Authority:</b> Cumbria <b>Religious Character:</b> Roman Catholic	0.54 miles
	<b>Name:</b> Furness Academy <b>Address:</b> Park Drive, Barrow-in-Furness, LA13 9BB <b>Contact Number:</b> 01229484270 <b>Age Range:</b> 11-16 yrs <b>Local Education Authority:</b> Cumbria <b>Religious Character:</b> Does not apply	0.73 miles
	<b>Name:</b> Moorfield Learning Centre <b>Address:</b> Moorfield Street, Barrow-in-Furness, LA13 9RS <b>Contact Number:</b> 01229837258 <b>Age Range:</b> 11-17 yrs <b>Local Education Authority:</b> Cumbria <b>Religious Character:</b> None	0.81 miles
	<b>Name:</b> Dowdales School <b>Address:</b> Dalton-in-Furness, LA15 8AH <b>Contact Number:</b> 01229469800 <b>Age Range:</b> 11-16 yrs <b>Local Education Authority:</b> Cumbria <b>Religious Character:</b> Does not apply	2.5 miles
	<b>Name:</b> Walney School <b>Address:</b> Sandy Gap Lane, Barrow-in-Furness, LA14 3JT <b>Contact Number:</b> 01229471528 <b>Age Range:</b> 11-16 yrs <b>Local Education Authority:</b> Cumbria <b>Religious Character:</b> None	2.69 miles

**Disclaimer:** The information represented in this section has been sourced from the Department of Education's 2019 results data s and is based on the property's postcode.



Farrell Heyworth 76 Cavendish Street, Barrow In Furness, LA14 1PZ 01229 839090

**Percentage of pupils achieving 5+ A\*-C/9-4 or equivalents including 9-4 in both English and mathematics GCSEs**

	Name	2019	2018	2017	2016
4	St Bernard's Catholic High School	62.0 %	67.0 %	72.0 %	58.0 %
	Furness Academy	46.0 %	50.0 %	47.0 %	38.0 %
	Moorfield Learning Centre	N/A	N/A	N/A	N/A
	Dowdales School	63.0 %	68.0 %	64.0 %	64.0 %
	Walney School	54.0 %	50.0 %	44.0 %	34.0 %
	<b>Cumbria</b>	<b>64.0 %</b>	<b>65.3 %</b>	<b>62.8 %</b>	<b>56.7 %</b>
	<b>National</b>	<b>60.0 %</b>	<b>59.4 %</b>	<b>56.6 %</b>	<b>53.5 %</b>

**Disclaimer:** The information represented in this section has been sourced from the Department of Education's 2017 results data set and is based on the property's postcode.

**Average number of GCSE entries per pupil**

	Name	Number
4	St Bernard's Catholic High School	7.0
	Furness Academy	6.1
	Moorfield Learning Centre	N/A
	Dowdales School	7.2
	Walney School	6.3
	<b>Cumbria</b>	<b>7.4</b>
	<b>National</b>	<b>7.1</b>

**Disclaimer:** The information represented in this section has been sourced from the Department of Education's 2019 results data set and is based on the property's postcode.





	Key Stage 5 - Information	Approx Distance
	<p><b>Name:</b> Furness College  <b>Address:</b> Channelside, Barrow-in-Furness, LA14 2PJ  <b>Contact Number:</b> 01229825017  <b>Age Range:</b> 16+ yrs  <b>Local Education Authority:</b> Cumbria  <b>Religious Character:</b> Does not apply  <b>Admission Policy:</b> Not applicable</p>	1.74 miles
	<p><b>Name:</b> Ulverston Victoria High School  <b>Address:</b> Springfield Road, Ulverston, LA12 0EB  <b>Contact Number:</b> 01229483900  <b>Age Range:</b> 11-18 yrs  <b>Local Education Authority:</b> Cumbria  <b>Religious Character:</b> Does not apply</p>	6.18 miles
	<p><b>Name:</b> Millom School  <b>Address:</b> Salthouse Road, Millom, LA18 5AB  <b>Contact Number:</b> 01229772300  <b>Age Range:</b> 11-18 yrs  <b>Local Education Authority:</b> Cumbria  <b>Religious Character:</b> Does not apply</p>	6.75 miles
	<p><b>Name:</b> Bay Leadership Academy  <b>Address:</b> Limes Avenue, Morecambe, LA3 1HS  <b>Contact Number:</b> 01524416830  <b>Age Range:</b> 11-18 yrs  <b>Local Education Authority:</b> Lancashire  <b>Religious Character:</b> Does not apply</p>	13.76 miles
	<p><b>Name:</b> Morecambe Community High School  <b>Address:</b> Dallam Avenue, Morecambe, LA4 5BG  <b>Contact Number:</b> 01524410207  <b>Age Range:</b> 11-18 yrs  <b>Local Education Authority:</b> Lancashire  <b>Religious Character:</b> Does not apply</p>	14.6 miles

**Disclaimer:** The information represented in this section has been sourced from the Department of Education's 2019 results data s and is based on the property's postcode.



**Percentage of A level students achieving at least three levels at grades AAB or better, at least two of which are in facilitating subjects**

	Name	%
5	Furness College	8.3 %
	Ulverston Victoria High School	16.3 %
	Millom School	20.0 %
	Bay Leadership Academy	N/A
	Morecambe Community High School	6.1 %
	<b>Cumbria</b>	<b>16.5 %</b>
<b>National</b>	<b>16.5 %</b>	

**Disclaimer:** The information represented in this section has been sourced from the Department of Education's 2019 results data set and is based on the property's postcode.

As well as actual pupil performance in tests and exams, an important Key Performance Indicator is that of Value Added. When pupils start a school, they all have varying levels of ability and social advantage. A school's Value Added score measures how much progress they have made from the beginning to the end of their compulsory secondary education (i.e. between the end of Key Stage 2 and the end of Key Stage 4). It is a quick measurement of the effect of a school on its pupils.

	Name	Value Added
5	Furness College	-0.2
	Ulverston Victoria High School	-0.2
	Millom School	-0.3
	Bay Leadership Academy	-0.5
	Morecambe Community High School	-0.5



**Farrell Heyworth** 76 Cavendish Street, Barrow In Furness, LA14 1PZ **01229 839090**





Everything you want  
to know about  
local health services





**How local are the health services?**

We all want good access to local health facilities, wherever we live. To see how well **Highlands Grove** is served, we have set out below the exact locations of hospitals, Accident & Emergency centres, GPs, pharmacies, dentists, out-of-hours medical care and walk-in clinics. Where it's available, you will find more detailed information, including the names of practitioners and their contact details.

	Hospitals	Approx Distance
	Furness General Hospital, Dalton Lane, Barrow-In-Furness, Cumbria, LA14 4LF	0.88 miles
	Royal Lancaster Infirmary, Ashton Road, Lancaster, Lancashire, LA1 4RP	17.23 miles
	Blackpool Victoria Hospital, Whinney Heys Road, Blackpool, Lancashire, FY3 8NR	22.27 miles
	Westmorland General Hospital, Kendal, LA9 7RG	22.72 miles
	Royal Preston Hospital, Sharoe Green Lane North, Preston, Lancashire, PR2 9HT	30.51 miles
	A&E	Approx Distance
	Furness General Hospital, Dalton Lane, Barrow-In-Furness, Cumbria, LA14 4LF	0.88 miles
	Royal Lancaster Infirmary, Ashton Road, Lancaster, Lancashire, LA1 4RP	17.23 miles
	Blackpool Victoria Hospital, Whinney Heys Road, Blackpool, Lancashire, FY3 8NR	22.27 miles
	Royal Preston Hospital, Sharoe Green Lane North, Preston, Lancashire, PR2 9HT	30.51 miles
	West Cumberland Hospital, Homewood, Whitehaven, CA28 8JG	31.59 miles

	Walk-in Clinics	Approx Distance
	Same Day Health Centre – Morecambe, Same Day Health Centre, Morecambe, Lancashire, LA4 5LY	14.28 miles
	Same Day Health Centre – Fleetwood, Same Day Health Centre, Fleetwood, Lancashire, FY7 6HP	16.03 miles
	Blackpool Victoria Hospital, Whinney Heys Road, Blackpool, Lancashire, FY3 8NR	22.27 miles
	Blackpool Nhs Walk-in Centre, Whitegate Health Centre, Blackpool, Lancashire, FY3 9ES	22.54 miles
	Westmorland General Hospital, Kendal, LA9 7RG	22.72 miles
	GPs	Approx Distance
	ABBEY ROAD SURGERY, 243 ABBEY ROAD, LA14 5JY	0.66 miles
	BRIDGEGATE MEDICAL CENTRE, BRIDGEGATE MEDICAL CENTRE, CUMBRIA, LA13 9SH	0.76 miles
	LIVERPOOL HOUSE SURGERY, LIVERPOOL HOUSE SURGERY, CUMBRIA, LA13 9QY	0.87 miles
	RISEDALE SURGERY, RISEDALE SURGERY, CUMBRIA, LA13 9RX	0.91 miles
	NORWOOD MEDICAL CENTRE, NORWOOD MEDICAL CENTRE, CUMBRIA, LA14 5ES	0.95 miles
	Dental Surgeons	Approx Distance
	Lancaster Dental Clinic, 8 Aldrens Lane, LANCASTER, Lancashire, LA1 2DU	16.86 miles
	Mayo Dental Clinic, 3 Meeting House Lane, LANCASTER, Lancashire, LA1 1TJ	16.86 miles
	Central Dental Practice, Telephone House, LANCASTER, Lancashire, LA1 1AB	16.91 miles
	Mayo Dental Clinic, Dallas Road, LANCASTER, Lancashire, LA1 1TW	16.92 miles
	Bay Dental Partnership, 6 New Street, LANCASTER, Lancashire, LA1 1EG	16.97 miles

**Disclaimer:** The information represented in this section has been sourced from Experian and is based on the property's postcode.



**Farrell Heyworth** 76 Cavendish Street, Barrow In Furness, LA14 1PZ 01229 839090





Everything you want  
to know about  
local policing





### Understanding who polices your neighbourhood

When you move to a new area, you want to know the arrangements for local community policing. See below for essential information about police services near to **Highlands Grove**. We have included location and contact details for the police station and wherever possible, details of police officers assigned to the area.

#### Your policing neighbourhood

The name of your policing neighbourhood is **Salthouse, Newbarns and Roose** and it has a population of **0**.

Your Local Policing Team			
Name	Rank	Tel No.	E-mail
Joanne Smith	Sergeant		
Martin Hayes	PC		
Jess Jones	PCSO		
Jo Smith	A/Inspector		
Gareth Sargent	PC		

**Disclaimer:** The information represented in this section has been sourced from data.police.uk.



**Disclaimer:** The information represented in this section has been sourced from data.police.uk.





**Farrell Heyworth** 76 Cavendish Street, Barrow, In Furness, LA14 1PZ **01229 839090**



