



Everything you need to know about:

**Pedders Lane,  
Ashton On Ribble, Preston,  
PR2 1HL**



**Introduction**



**The Property**



**Local Authority**



**Transport Links**

**Education**



**Health**



**Local Policing**





### An invaluable insight into your new home

This i-PACK brochure offers an informed overview of **Pedders Lane** as a potential new home, along with essential material about its surrounding area and its local community. It provides a valuable insight for any prospective owner or tenant.

We wanted to provide you with information that you can absorb quickly, so we have presented it as visually as possible, making use of maps, icons, tables, graphs and charts. Overall, the brochure contains information about:

- **The Property** - including property details, floor plans, room details, photographs and Energy Performance Certificate.
- **Transport** - including locations of bus and coach stops, railway stations and ferry ports.
- **Health** - including locations, contact details and organisational information on the nearest GPs, pharmacies, hospitals and dentists.
- **Local Policing** - including locations, contact details and information about local community policing and the nearest police station, as well as police officers assigned to the area.
- **Education** - including locations of infant, primary and secondary schools and Key Performance Indicators (KPIs) for each key stage.



**Farrell Heyworth 309 Garstang Road, Preston, PR2 9XJ 01772 203345**



PEDDERS LANE, PRESTON £194,950



x3

Bedrooms



x1

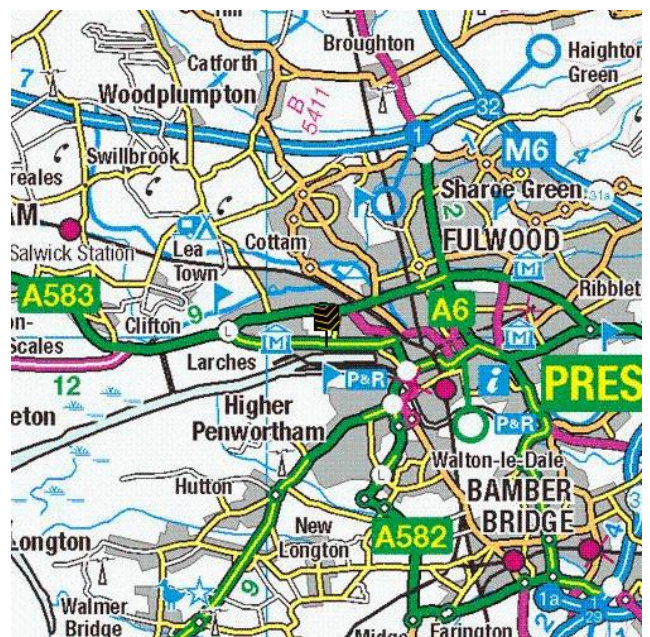
Living Rooms

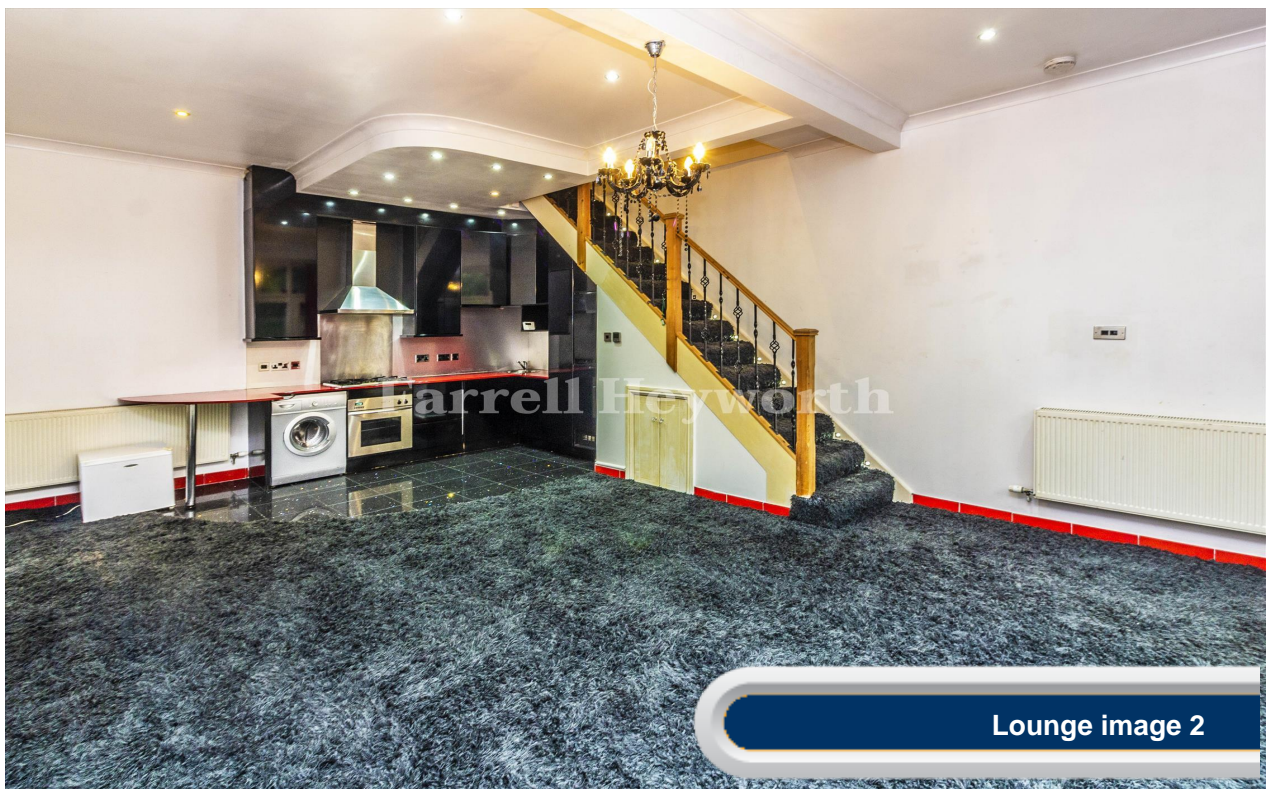


x1

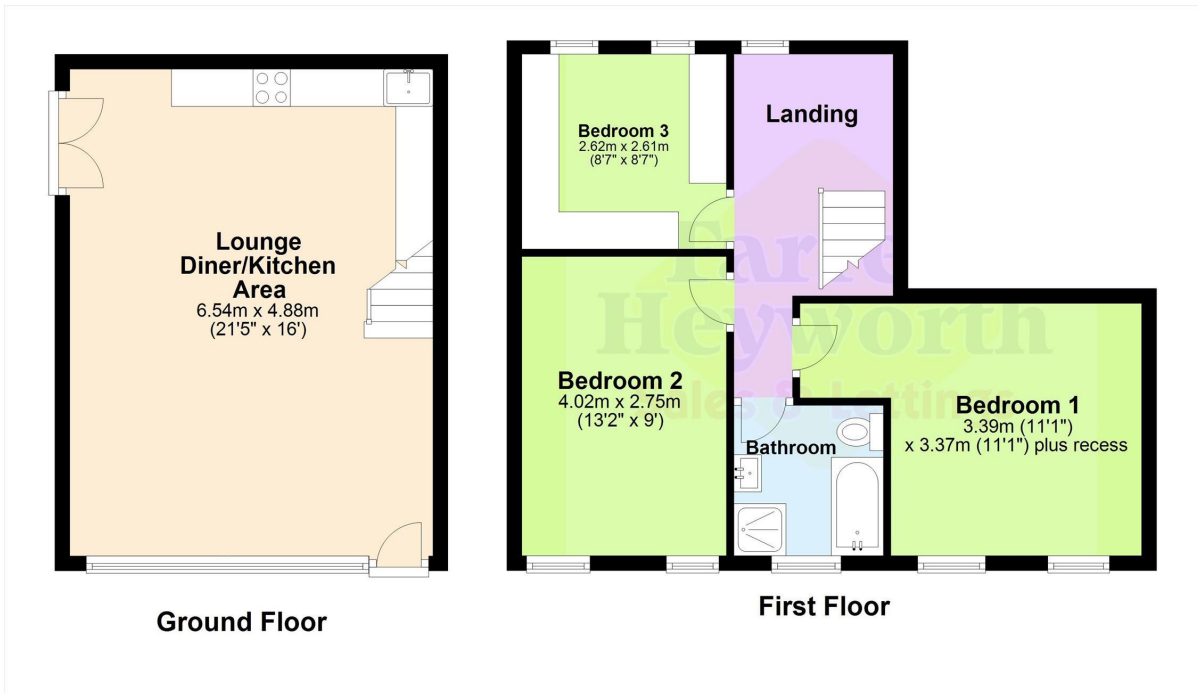
Bathrooms

Where you are











Everything you want  
to know about  
local authorities







**Get to know your local authorities**

Local government directly affects quality of life, particularly when it comes to council tax, planning, waste disposal and the impact of local policies. You may want to investigate how this is likely to affect you if you decide to move. There are nearly 400 local authorities in England, with five different types of local government structure. These can be broadly divided into **single-tier** and **two-tier authorities**. Single-tier authorities are **Metropolitan Authorities, London Boroughs** and **Unitary or Shire Authorities**. Two-tier authorities have both a **County Council**, and a **District Council or City Council**. There are also around 10,000 parish and town councils, effectively creating an additional tier in some areas - mostly, but not exclusively, in rural areas. The National Association of Local Councils (NALC) represents and works on behalf of these community councils and is a useful contact point.

The local authority locations and contact details for **Pedders Lane** are:

Shire / County / District	Website	Address	Contact details
---------------------------	---------	---------	-----------------

**Disclaimer:** The information displayed above has been obtained using the property's postcode in proximity to its local authority. It is recommended that this information is independently verified.



Everything you want  
to know about  
transport links

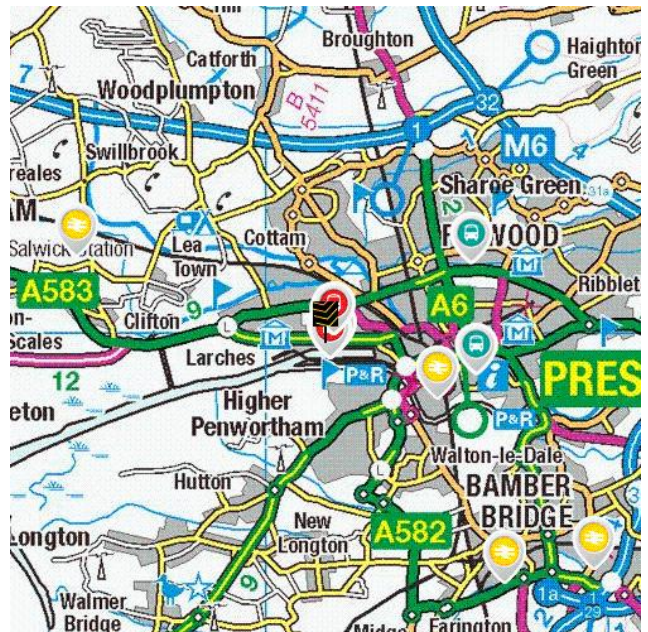







**Become familiar with public transport links**

Being able to choose to travel by public transport is important for many reasons. It helps to reduce congestion, provides access to work and education, and facilitates use of health and leisure facilities. If you or your family members travel abroad, access to the nearest ferry terminals is also likely to be a significant factor in choosing a new property. Using the maps below, you can pinpoint the precise locations of transport links for **Pedders Lane**. Tables for each type of transport indicate the property's distance from the nearest bus stops, railway stations, coach stops and ferry terminals (providing that these facilities are within the scale proximity of the maps.)

**Transport Links**



	Airports	Approx Distance
	Blackpool International Airport	12.27 miles
	Liverpool John Lennon Airport	29.93 miles
	Manchester Airport	33.93 miles
	Leeds Bradford International Airport	44.66 miles
	Ferry ports	Approx Distance
	Knott End-On-Sea Ferry Landing	15.3 miles
	Fleetwood for Knott End Ferry Landing	15.51 miles
	Heysham Ferry Terminal	19.75 miles
	Liverpool Belfast Ferry Terminal Bootle	24.75 miles
	Liverpool Isle of Man & Dublin Terminal	26.97 miles
	Train Stations	Approx Distance
	Preston Rail Station	1.51 miles
	Salwick Rail Station	3.26 miles
	Lostock Hall Rail Station	3.63 miles
	Bamber Bridge Rail Station	4.26 miles
	Leyland Rail Station	5.14 miles

**Disclaimer:** The information represented in this section has been sourced from the Department of Transport's Open Data and is based on the property's postcode. It is recommended that this information is independently verified.



**Farrell Heyworth** 309 Garstang Road, Preston, PR2 9XJ 01772 203345

	Bus Stops	Approx Distance
	Whinfield Lane	0.11 miles
	Pedders Lane	0.13 miles
	Health Centre	0.13 miles
	Whinfield Lane	0.14 miles
	Pedders Lane Shelter	0.2 miles
	Coach Stops	Approx Distance
	Preston Bus Station	1.88 miles
	Fulwood (Preston) Coach Stop	2.06 miles
	Freckleton Coach Stop	5.21 miles
	Warton (Lancs): Pickwick Coach Stop	6.28 miles
	Chorley Interchange	9.06 miles

**Disclaimer:** The information represented in this section has been sourced from the Department of Transport's Open Data and is based on the property's postcode. It is recommended that this information is independently verified.



**Farrell Heyworth** 309 Garstang Road, Preston, PR2 9XJ **01772 203345**



Everything you want  
to know about  
local schools



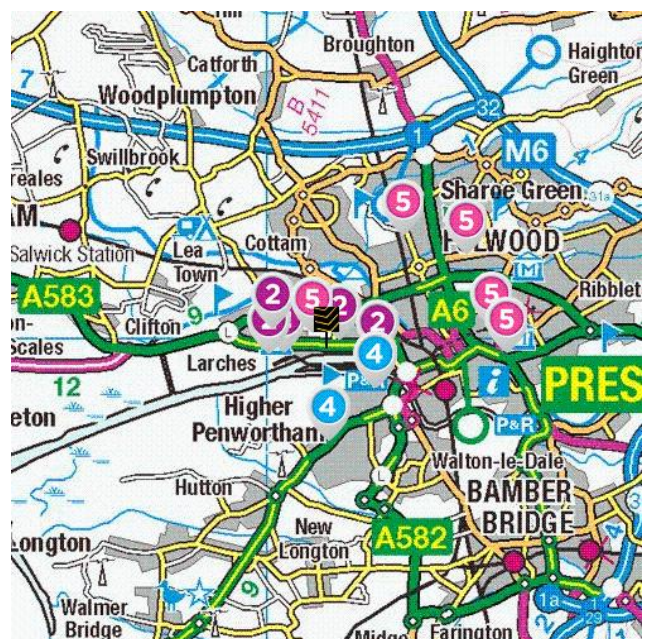


### How are local schools performing?

If schools are important to you, then this section sets out the published Key Performance Indicators for schools near to your prospective new home. Key Performance Indicators look primarily at how well pupils perform in their tests and examinations, as well as some other measures like attendance.

If you want to know more about a particular school or college, you can also visit the Ofsted website <http://www.ofsted.gov.uk/inspection-reports/find-inspection-report>

### Local Schools



The next page shows tables and charts divided into Key Stages and a list of respective schools local to **Pedders Lane**. There are four main age-related Key Stages defined as:



Special schools are marked with this icon

Key Stage	Definition
<b>Key Stage 1</b>	Fits broadly with the first stage of education, i.e. ages 5-7.
<b>Key Stage 2</b>	Fits the later stage of primary education, often known as junior schools, i.e. ages 8-11. This takes pupils up to the standardised break at age 11 after which pupils generally change schools and transfer to secondary education.
<b>Key Stage 3</b>	Secondary education split between key stages 3 and 4, with key stage 3 covering ages 11-13.
<b>Key Stage 4</b>	Key Stage 4 (ages 14-16) covers the two year period of study for GCSE level examinations.
<b>Key Stage 5</b>	Beyond key stage 4 is 16+ or Sixth Form provision, sometimes unofficially referred to as Key Stage 5.



**Farrell Heyworth** 309 Garstang Road, Preston, PR2 9XJ **01772 203345**




	Key Stage 2 - Information	Approx Distance
	<p><b>Name:</b> Ashton-on-Ribble St Andrew's Church of England Primary School  <b>Address:</b> Tulketh Road, Preston, PR2 1EQ  <b>Contact Number:</b> 01772726729  <b>Age Range:</b> 5-11 yrs  <b>Local Education Authority:</b> Lancashire  <b>Religious Character:</b> Church of England</p>	0.26 miles
	<p><b>Name:</b> Royal Cross Primary School   <b>Address:</b> Elswick Road, Preston, PR2 1NT  <b>Contact Number:</b> 01772729705  <b>Age Range:</b> 3-11 yrs  <b>Local Education Authority:</b> Lancashire  <b>Religious Character:</b> Does not apply</p>	0.51 miles
	<p><b>Name:</b> Sacred Heart Catholic Primary School  <b>Address:</b> Poulton Street, Preston, PR2 2SA  <b>Contact Number:</b> 01772726937  <b>Age Range:</b> 4-11 yrs  <b>Local Education Authority:</b> Lancashire  <b>Religious Character:</b> Roman Catholic</p>	0.63 miles
	<p><b>Name:</b> Lea Community Primary School  <b>Address:</b> Greavestown Lane, Preston, PR2 1PD  <b>Contact Number:</b> 01772726408  <b>Age Range:</b> 5-11 yrs  <b>Local Education Authority:</b> Lancashire  <b>Religious Character:</b> Does not apply</p>	0.71 miles
	<p><b>Name:</b> Ashton Primary School  <b>Address:</b> Ainsdale Drive, Preston, PR2 1TU  <b>Contact Number:</b> 01772728052  <b>Age Range:</b> 4-11 yrs  <b>Local Education Authority:</b> Lancashire  <b>Religious Character:</b> Does not apply</p>	0.73 miles

**Disclaimer:** The information represented in this section has been sourced from the Department of Education's 2019 results data s and is based on the property's postcode.




## Reading, Writing and Maths

	Name	Expected	Higher
	Ashton-on-Ribble St Andrew's Church of England Primary School	85.0 %	19.0 %
	Royal Cross Primary School	N/A	N/A
	Sacred Heart Catholic Primary School	48.0 %	8.0 %
	Lea Community Primary School	43.0 %	0.0 %
	Ashton Primary School	41.0 %	7.0 %
	<b>Lancashire</b>	<b>64.0 %</b>	<b>10.0 %</b>
	<b>National</b>	<b>65.0 %</b>	<b>11.0 %</b>

## Primary Progress Measures

As well as actual pupil performance in tests and exams an important Key Performance Indicator is that of progress measures that compare the actual achievements of other pupils nationally with similar prior attainment. Any increase in attainment achieved by each pupil will be reflected in the schools progress scores. They are fairer to schools in challenging circumstances, as they recognise a school that is doing a good job with an intake with poor prior attainment





## Progress Measures for 2019

	Name	Math	Reading	Writing
	Ashton-on-Ribble St Andrew's Church of England Primary School	2.2 %	1.9 %	0.1 %
	Royal Cross Primary School	N/A	N/A	N/A
	Sacred Heart Catholic Primary School	-1.7 %	0.3 %	0.3 %
	Lea Community Primary School	-2.8 %	-2.2 %	0.6 %
	Ashton Primary School	-0.1 %	-3.2 %	0.5 %

**Disclaimer:** The information represented in this section has been sourced from the Department of Education's 2019 results data set and is based on the property's postcode.



Farrell Heyworth 309 Garstang Road, Preston, PR2 9XJ 01772 203345

	Key Stage 4 - Information	Approx Distance
	<p><b>Name:</b> Ashton Community Science College  <b>Address:</b> Aldwych Drive, Preston, PR2 1SL  <b>Contact Number:</b> 01772513002  <b>Age Range:</b> 11-16 yrs  <b>Local Education Authority:</b> Lancashire  <b>Religious Character:</b> Does not apply  <b>Admission Policy:</b> Comprehensive</p>	0.33 miles
	<p> <b>Name:</b> Lime Meadows  <b>Address:</b> Co Hexagon Care Services, Preston, PR2 2YQ  <b>Contact Number:</b> 01613397368  <b>Age Range:</b> 11-18 yrs  <b>Local Education Authority:</b> Tameside  <b>Religious Character:</b> None</p>	0.71 miles
	<p> <b>Name:</b> The Birches  <b>Address:</b> Co Hexagon Care Services, Preston, PR2 2YQ  <b>Contact Number:</b> 01253892305  <b>Age Range:</b> 11-17 yrs  <b>Local Education Authority:</b> Lancashire  <b>Religious Character:</b> None</p>	0.71 miles
	<p> <b>Name:</b> Stonegate School  <b>Address:</b> Co Hexagon Care Services, Preston, PR2 2YQ  <b>Contact Number:</b> 01524263237  <b>Age Range:</b> 11-16 yrs  <b>Local Education Authority:</b> Lancashire  <b>Religious Character:</b> None</p>	0.71 miles
	<p><b>Name:</b> Penwortham Priory Academy  <b>Address:</b> Crow Hills Road, Preston, PR1 0JE  <b>Contact Number:</b> 01772320250  <b>Age Range:</b> 11-16 yrs  <b>Local Education Authority:</b> Lancashire  <b>Religious Character:</b> Does not apply</p>	1.04 miles

**Disclaimer:** The information represented in this section has been sourced from the Department of Education's 2019 results data and is based on the property's postcode.



**Percentage of pupils achieving 5+ A\*-C/9-4 or equivalents including 9-4 in both English and mathematics GCSEs**

	Name	2019	2018	2017	2016
4	Ashton Community Science College	49.0 %	58.0 %	52.0 %	48.0 %
	Lime Meadows	N/A	N/A	N/A	N/A
	The Birches	N/A	N/A	N/A	N/A
	Stonegate School	N/A	N/A	N/A	N/A
	Penwortham Priory Academy	64.0 %	55.0 %	58.0 %	63.0 %
	<b>Lancashire</b>	<b>66.0 %</b>	<b>66.1 %</b>	<b>61.7 %</b>	<b>58.5 %</b>
	<b>National</b>	<b>60.0 %</b>	<b>59.4 %</b>	<b>56.6 %</b>	<b>53.5 %</b>

**Disclaimer:** The information represented in this section has been sourced from the Department of Education's 2017 results data set and is based on the property's postcode.

**Average number of GCSE entries per pupil**

	Name	Number
4	Ashton Community Science College	7.6
	Lime Meadows	N/A
	The Birches	N/A
	Stonegate School	N/A
	Penwortham Priory Academy	6.1
	<b>Lancashire</b>	<b>7.5</b>
	<b>National</b>	<b>7.1</b>

**Disclaimer:** The information represented in this section has been sourced from the Department of Education's 2019 results data set and is based on the property's postcode.



	Key Stage 5 - Information	Approx Distance
	<p><b>Name:</b> Ashton Community Science College  <b>Address:</b> Aldwych Drive, Preston, PR2 1SL  <b>Contact Number:</b> 01772513002  <b>Age Range:</b> 11-16 yrs  <b>Local Education Authority:</b> Lancashire  <b>Religious Character:</b> Does not apply  <b>Admission Policy:</b> Comprehensive</p>	0.33 miles
	<p><b>Name:</b> Fulwood Academy  <b>Address:</b> Black Bull Lane, Preston, PR2 9YR  <b>Contact Number:</b> 01772719060  <b>Age Range:</b> 11-16 yrs  <b>Local Education Authority:</b> Lancashire  <b>Religious Character:</b> Does not apply</p>	1.73 miles
	<p><b>Name:</b> Moor Park High School and Sixth Form  <b>Address:</b> Moor Park Avenue, Preston, PR1 6DT  <b>Contact Number:</b> 01772795428  <b>Age Range:</b> 11-18 yrs  <b>Local Education Authority:</b> Lancashire  <b>Religious Character:</b> None</p>	2.04 miles
	<p><b>Name:</b> Preston College  <b>Address:</b> Fulwood Campus, Preston, PR2 8UR  <b>Contact Number:</b> 01772225000  <b>Age Range:</b> 16+ yrs  <b>Local Education Authority:</b> Lancashire  <b>Religious Character:</b> Does not apply  <b>Admission Policy:</b> Not applicable</p>	2.1 miles
	<p><b>Name:</b> Preston Muslim Girls High School  <b>Address:</b> Quwwatul Education Centre, Preston, PR1 6QQ  <b>Contact Number:</b> 01772651906  <b>Age Range:</b> 11-19 yrs  <b>Local Education Authority:</b> Lancashire  <b>Religious Character:</b> Muslim</p>	2.2 miles

**Disclaimer:** The information represented in this section has been sourced from the Department of Education's 2019 results data s and is based on the property's postcode.



**Percentage of A level students achieving at least three levels at grades AAB or better, at least two of which are in facilitating subjects**

	Name	%
5	Ashton Community Science College	N/A
	Fulwood Academy	N/A
	Moor Park High School and Sixth Form	0.0 %
	Preston College	0.0 %
	Preston Muslim Girls High School	N/A
	<b>Lancashire</b>	<b>15.1 %</b>
	<b>National</b>	<b>16.5 %</b>

**Disclaimer:** The information represented in this section has been sourced from the Department of Education's 2019 results data set and is based on the property's postcode.

As well as actual pupil performance in tests and exams, an important Key Performance Indicator is that of Value Added. When pupils start a school, they all have varying levels of ability and social advantage. A school's Value Added score measures how much progress they have made from the beginning to the end of their compulsory secondary education (i.e. between the end of Key Stage 2 and the end of Key Stage 4). It is a quick measurement of the effect of a school on its pupils.

	Name	Value Added
5	Ashton Community Science College	N/A
	Fulwood Academy	N/A
	Moor Park High School and Sixth Form	0.1
	Preston College	-0.5
	Preston Muslim Girls High School	N/A



**Farrell Heyworth** 309 Garstang Road, Preston, PR2 9XJ 01772 203345



Everything you want  
to know about  
local health services





**How local are the health services?**

We all want good access to local health facilities, wherever we live. To see how well **Peddars Lane** is served, we have set out below the exact locations of hospitals, Accident & Emergency centres, GPs, pharmacies, dentists, out-of-hours medical care and walk-in clinics. Where it's available, you will find more detailed information, including the names of practitioners and their contact details.

Hospitals	Approx Distance
 Royal Preston Hospital, Sharoe Green Lane North, Preston, Lancashire, PR2 9HT	2.25 miles
Chorley And South Ribble Hospital, Chorley and South Ribble Hospital, Chorley, Lancashire, PR7 1PP	8.12 miles
Royal Blackburn Hospital, Haslingden Road, Blackburn, Lancashire, BB2 3HH	11.41 miles
Blackpool Victoria Hospital, Whinney Heys Road, Blackpool, Lancashire, FY3 8NR	11.82 miles
Southport And Formby District General Hospital, Southport, Merseyside, PR8 6PN	13.3 miles
A&E	Approx Distance
 Royal Preston Hospital, Sharoe Green Lane North, Preston, Lancashire, PR2 9HT	2.25 miles
Chorley And South Ribble Hospital, Chorley and South Ribble Hospital, Chorley, Lancashire, PR7 1PP	8.12 miles
Royal Blackburn Hospital, Haslingden Road, Blackburn, Lancashire, BB2 3HH	11.41 miles
Blackpool Victoria Hospital, Whinney Heys Road, Blackpool, Lancashire, FY3 8NR	11.82 miles
Southport And Formby District General Hospital, Southport, Merseyside, PR8 6PN	13.3 miles



	Walk-in Clinics	Approx Distance
	Dr T L Phillips At Barbara Castle Health Centre, Level Two, Lancashire, BB2 1AX	10.47 miles
	Royal Blackburn Hospital, Haslingden Road, Blackburn, Lancashire, BB2 3HH	11.41 miles
	Blackpool Victoria Hospital, Whinney Heys Road, Blackpool, Lancashire, FY3 8NR	11.82 miles
	Darwen Health Care, Darwen Health Centre, Lancashire, BB3 1PY	12.06 miles
	Blackpool Nhs Walk-in Centre, Whitegate Health Centre, Blackpool, Lancashire, FY3 9ES	12.37 miles
	GPs	Approx Distance
	THE PARK MEDICAL PRACTICE, THE PARK MEDICAL PRACTICE, LANCASHIRE, PR2 1JR	0.32 miles
	COTTAM LANE - DR NATH, COTTAM LANE, LANCASHIRE, PR2 1JR	0.32 miles
	BRIARWOOD MEDICAL CENTRE, BRIARWOOD MEDICAL CENTRE, LANCASHIRE, PR2 1HY	0.36 miles
	DOCLANDS MEDICAL CENTRE, DOCLANDS MEDICAL CENTRE, LANCASHIRE, PR2 2RL	0.8 miles
	ST WALBURGE'S MEDICAL PRACTICE, 34-35 ASHTON STREET, PR2 2PP	1.05 miles
	Dental Surgeons	Approx Distance
	Community Dental Services, Ashton Road, LANCASTER, Lancashire, LA1 4RR	19.14 miles
	Mayo Dental Clinic, Dallas Road, LANCASTER, Lancashire, LA1 1TW	19.53 miles
	Brock Street Dental Practice, 8 Brock Street, LANCASTER, Lancashire, LA1 1UU	19.57 miles
	Central Dental Practice, Telephone House, LANCASTER, Lancashire, LA1 1AB	19.65 miles
	Marketgate Dental Practice, Marketgate Shopping Centre, LANCASTER, Lancashire, LA1 1JF	19.65 miles

**Disclaimer:** The information represented in this section has been sourced from Experian and is based on the property's postcode.



**Farrell Heyworth** 309 Garstang Road, Preston, PR2 9XJ 01772 203345



Everything you want  
to know about  
local policing





### Understanding who polices your neighbourhood

When you move to a new area, you want to know the arrangements for local community policing. See below for essential information about police services near to **Pedders Lane**. We have included location and contact details for the police station and wherever possible, details of police officers assigned to the area.

#### Your policing neighbourhood

The name of your policing neighbourhood is **Ashton and Docks** and it has a population of **7156**.

#### Your Local Policing Team

Name	Rank	Tel No.	E-mail
Kenny Saunders	Constable		
Sharon Noble	PCSO		
James Martin	PCSO		

**Disclaimer:** The information represented in this section has been sourced from data.police.uk.

#### Locations of Interest

Preston Police Station  
station  
Lancaster Road North Preston

Preston Police Station is open 08:00 to 20:00 Monday to Friday, 09:00 to 18:00 Saturday and Sunday

**Disclaimer:** The information represented in this section has been sourced from data.police.uk.



**Farrell Heyworth 309 Garstang Road, Preston, PR2 9XJ 01772 203345**

