



Jessop Road, Pin Green, Stevenage, SG1 5LZ

GUIDE PRICE £365,000 - £375,000 PEACEFULLY LOCATED and VERY SPACIOUS THREE BEDROOM FAMILY HOME with GARAGE and DRIVEWAY for Two Cars Overlooking a Delightful GREEN AREA within Easy Access to Local Shopping and Schooling. Features include FITTED KITCHEN/DINER, Downstairs WC, UTILITY ROOM, Rear Lobby, LOUNGE AREA with Bay Window Front Aspect, THREE SIZABLE BEDROOMS, Fitted Bathroom, Front and Rear Gardens, VIEWING HIGHLY RECOMMENDED

Guide Price £365,000

Jessop Road, Pin Green, Stevenage, SG1 5LZ

- Peacefully Located and Spacious Three Bedroom Family Home
- Overlooking Green Area
- Fitted Kitchen/Diner
- Utility Room and Rear Lobby
- Fitted Bathroom
- Garage and Driveway for Two Cars
- Within Easy Access to Local Shopping and Schooling
- Downstairs W.C
- Three Sizeable Bedrooms
- Front and Rear Gardens

Entrance Hallway

6'11 x 5'7 (2.11m x 1.70m)

Composite Door to Front Aspect, Laminate Flooring, Double Panel Radiator, Coved Ceiling, Stairs to 1st Floor Landing.

Downstairs W.C

6'11 x 2'7 (2.11m x 0.79m)

Low Level W.C, Double Glazed Window to Front Aspect, Wash Basin with Vanity Cupboard and Tiled Splash Back.

Fitted Kitchen and Dining Area

18'0 x 8'11 (5.49m x 2.72m)

Tiled Flooring, Cupboards at Eye and Base Level, Space for Fridge/Freezer, Tiled Splash Back, Stainless Steel Sink and Mixer Tap, Gas Hob, Coved Ceiling, Electric Gril and Oven, Single Panel Radiator, Double French Doors Opening to Garden, Wall Mounted Glow Worm Micron Boiler, Double Glazed Window to Rear Aspect.

Utility Room

5'6 x 5'6 (1.68m x 1.68m)

Space for Tumble Dryer and Washing Machine, Consumer Unit.

Rear Lobby

3'2 x 8'11 (0.97m x 2.72m)

Coat Cupboard, Tiled Flooring, Door to Garage, Double Glazed Door to Side Aspect.

Lounge Area

10'3 x 17'1 (3.12m x 5.21m)

Bay Window to Front Aspect, T.V Point, Laminate Flooring, Coved Ceiling.

Garage and Driveway

16'1 x 8'3 (4.90m x 2.51m)

Metal Up and Over Door, Power and Lighting.

Landing

12'1 x 4'5 (3.68m x 1.35m)

Doors to all rooms, Loft Access, Airing Cupboard, Double Glazed Window to Rear Aspect.

Bedroom Three

6'11 x 11'4 (2.11m x 3.45m)

Storage Cupboard, Double Glazed Window to Front Aspect, Coved Ceiling, Single Panel Radiator,

Bedroom Two

8'11 x 12'11 (2.72m x 3.94m)

Single Panel Radiator, Fitted Wardrobes, Double Glazed Window to Rear Aspect, Coved Ceiling.

Bedroom One

10'1 x 12'11 (3.07m x 3.94m)

Double Glazed Window to Front Aspect, Coved Ceiling, Single Panel Radiator, Delightful Views over the Green Space.

Fitted Bathroom

5'6 x 8'3 (1.68m x 2.51m)

Low Level W.C, Wash Basin and Mixer Tap with Tiled Splash Back, Bath and Mixer Tap with Mains Shower over, Vinyl Flooring, Extractor Fan, Coved Ceiling, Heated Towel Rail, Vanity Cupboard, Misted Double Glazed Window to Rear Aspect.

South Facing Rear Garden

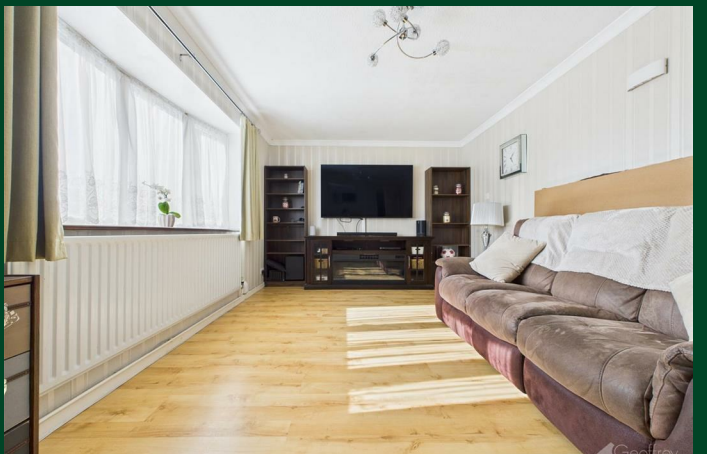
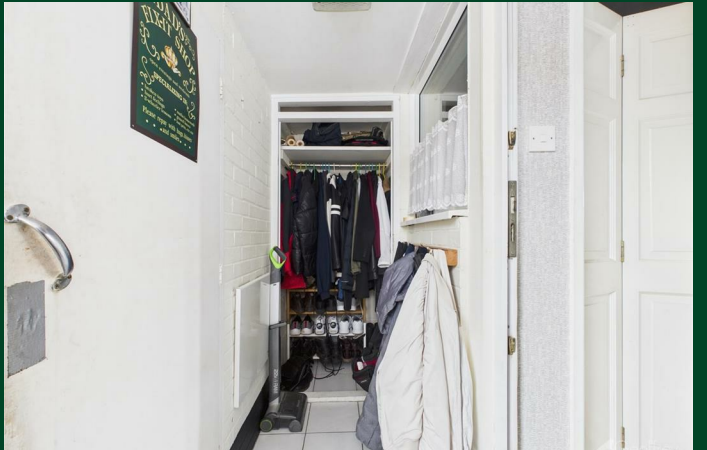
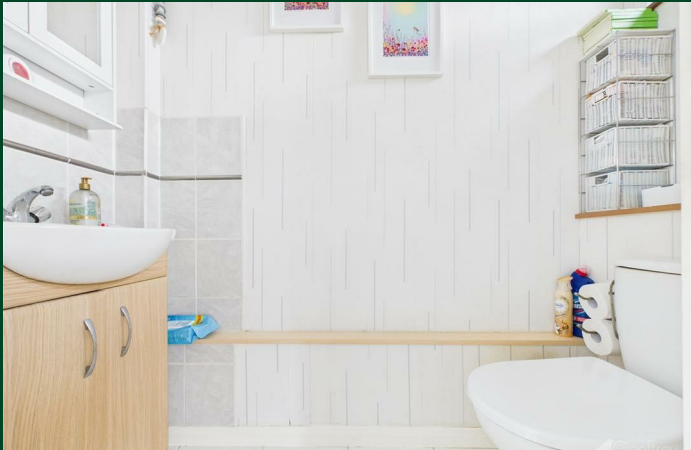
Mainly Paved, Timber Fencing, Outside Tap, Storage Unit, Awning.

Front Garden and Outlook over Green Area

Laid to Lawn, Picket Fencing, Pathway to Front Door, Overlooking the Large Green Area ideal for young children with an enclosed non pedestrian space.

Local Information

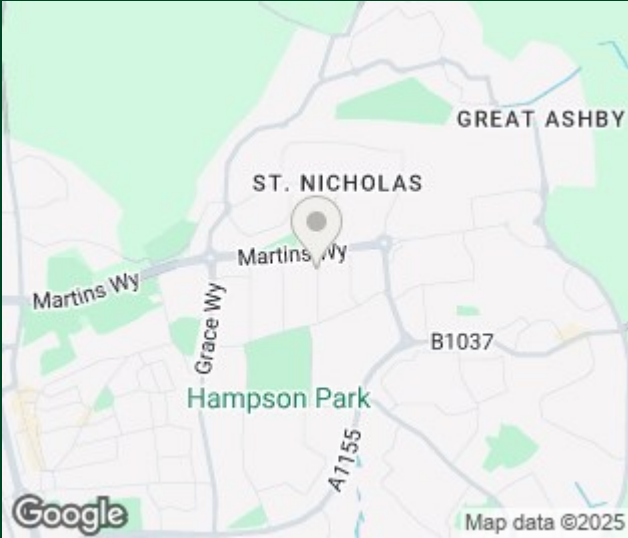
Jessop Road is located in Pin Green within easy access of the Oval Shopping Complex and close to local bus links.





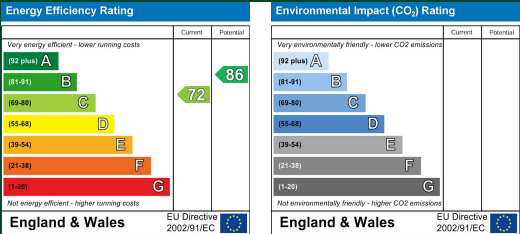


Floor Plan



Council Tax Details

Band: C



These particulars, whilst believed to be accurate are set out as a general outline only for guidance and do not constitute any part of an offer or contract. Intending purchasers should not rely on them as statements of representation of fact, but must satisfy themselves by inspection or otherwise as to their accuracy. No person in this firms employment has the authority to make or give any representation or warranty in respect of the property.

Old Harlow: 01279 444988 Email: harlow@geoffreymatthew.co.uk
Great Ashby: 01438 740111 Email: greatashby@geoffreymatthew.co.uk