



## Monarch Rise, Chrysalis Park, Stevenage, SG1 4FS

This MAGNIFICENTLY PRESENTED Three Bedroom DETACHED FAMILY HOME with GARAGE and DRIVEWAY built in 2011, Situated On The Modern Development Of CHRYSALIS PARK, Which Benefits From An Excellent School Catchment Including MARTINS WOOD PRIMARY & NOBEL SECONDARY Schooling. Features Include Fitted Kitchen/Diner, Lounge Area with French Doors Opening to Garden, Downstairs WC, THREE SIZABLE BEDROOMS Ensuite to Master Bedroom and Family Bathroom, Unusually Large Rear Garden, Close to Box Wood and Serpentine Park, Viewing Highly Suggested.

£420,000

# Monarch Rise, Chrysalis Park, Stevenage, SG1 4FS

- Magnificently Presented Three Bedroom Detached Family Home
- Situated in Chrysalis Park
- Fitted Kitchen/Diner
- Downstairs W.C
- Ensuite to Master Bedroom and Family Bathroom
- Garage and Driveway
- Excellent School Catchment Including Martins Wood Primary & Nobel Secondary Schooling
- Lounge Area with French Doors Opening to Garden
- Three Respectable Sized Bedrooms
- Unusually Large Rear Garden, Close to Box Wood and Serpentine Park

## Entrance Hallway

Single Panel Radiator, Coconut Matting, Double Glazed Door to Front Aspect, Stairs to 1st Floor Landing, Smoke Alarm, Spot Lighting.

## Kitchen/Diner

Tiled Flooring, Spot Lighting, Bay Window to Front Aspect, Double Panel Radiator, Roll Top Work Surfaces, Stainless Steel Sink and Mixer Tap, Double Glazed Window to Front Aspect, Heated Towel Rail, Built in Fridge/Freezer and Hot Point Dishwasher, Space for Washing Machine, 4 Ring Gas Hob, LED Spot Lighting, Double Panel Radiator.

## Downstairs W.C

Low Level W.C, Wash Basin with Tiled Splash Back, Tiled Flooring, Single Panel Radiator, Wall Mounted Ideal Boiler (Logic Heat 12) Extractor Fan.

## Lounge Area

Under Stairs Cupboard, French Doors Opening to Garden, Double Panel Radiator, T.V Point, 2 x Single Panel Radiator.

## Landing

Doors to all rooms, Airing Cupboard, Loft Access, Single Panel Radiator.

## Bedroom One

Fitted Wardrobe, Single Panel Radiator, Double Glazed Window to Rear Aspect, Door to Ensuite.

## Ensuite to Bedroom One

LED Spot Lighting, Low Level WC, Wash Basin with Tiled Splash Back, Shower Cubicle with Mains Shower, Vanity Cupboard, Heated Towel Rail, Shaver Point, Extractor Fan.

## Bedroom Two

Single Panel Radiator, Double Glazed Window to Front Aspect.

## Bedroom Three

Double Glazed Window to Rear Aspect.

## Family Bathroom

Low Level W.C, Bath and Mixer Tap, Glass Shower Screen, LED Spot Lighting, Wash Basin and Mixer Tap, Double Glazed Window to Front Aspect, Tiled Flooring, Shaver Point.

## Rear Garden

Patio Area, Laid to Lawn, Timber Fencing, Mature Trees and Shrubs, Patio Awning, Outside Tap.

## Garage and Driveway

Power and Lighting, Metal Up and Over Door, Rear Door for Access.

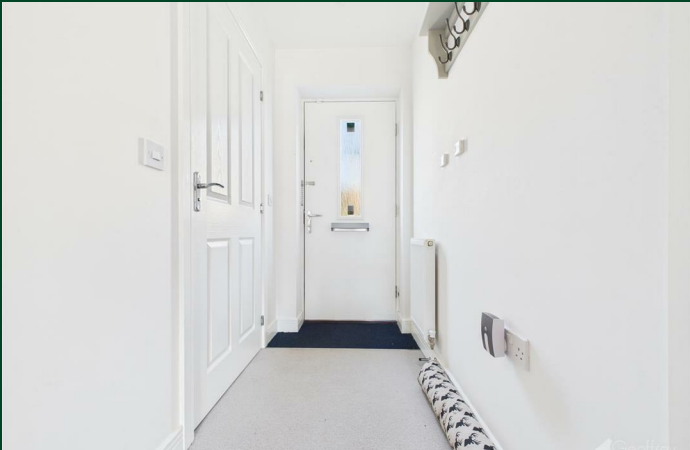
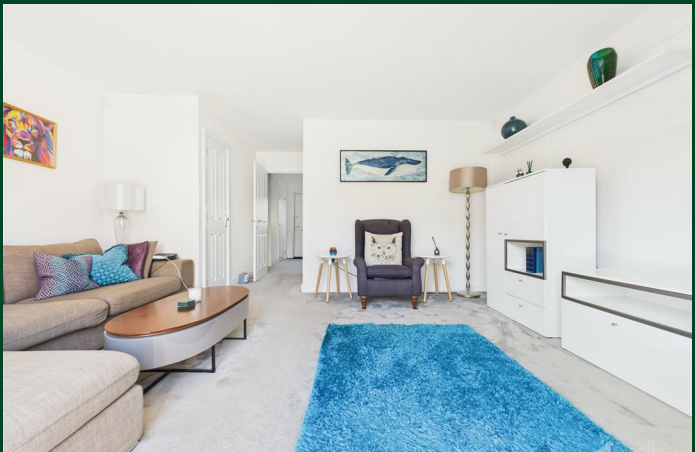
## Front Garden

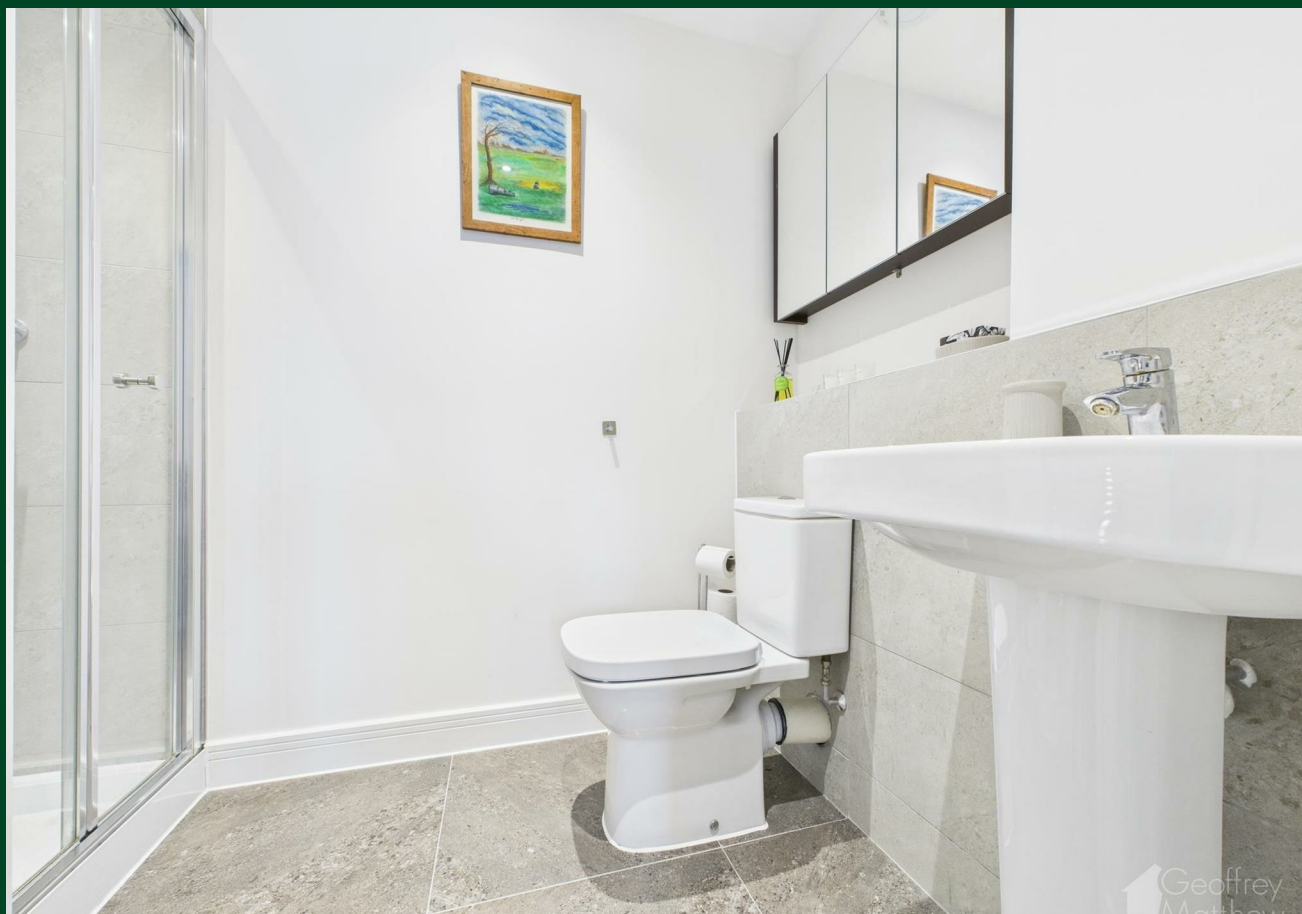
Laid to Lawn, Pathway to Front Aspect.

## Local Information

Monarch Rise is situated in the Chrysalis Park area of Stevenage which is close to Box Wood (AS PICTURED) which offers excellent country walks towards Walkern and Aston Village.









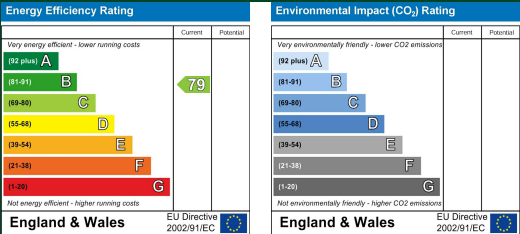


Floor Plan



Council Tax Details

Band: D



These particulars, whilst believed to be accurate are set out as a general outline only for guidance and do not constitute any part of an offer or contract. Intending purchasers should not rely on them as statements of representation of fact, but must satisfy themselves by inspection or otherwise as to their accuracy. No person in this firms employment has the authority to make or give any representation or warranty in respect of the property.