



Dryden Crescent, Poets, Chells, Stevenage, SG2 0JH

GUIDE PRICE £435,000 - £450,000 RARELY AVAILABLE Well Presented and EXTENDED Three Bedroom Family Semi Detached Home with GARAGE and DRIVEWAY for THREE CARS located in Highly Regarded BOXFIELD/POETS Development within easy catchment of Nobel School. Features include MODERN 19ft KITCHEN/DINER, Lounge Area with Bay Window, DOWNSTAIRS RECEPTION ROOM/BEDROOM and ENSUITE, Storage Room/Part Garage, Entrance Hallway, Three Spacious Bedrooms, Family Bathroom, SPACIOUS REAR GARDEN.

Guide Price £435,000

Dryden Crescent, Poets, Chells, Stevenage, SG2 0JH

- Well Presented Three Bedroom Extended Semi Detached Family Home
- Located in the Highly Regarded Boxfield/Poets Development
- Modern 19ft Kitchen/Dining Room
- Downstairs Reception Room/Bedroom with Ensuite
- Three Spacious Bedrooms
- Part Converted Garage and Driveway for 3 Cars
- Within Easy Catchment of Nobel School
- Lounge Area with Bay Window
- Storage Room/Part Garage
- Spacious Zero Low Maintanance Rear Garden

Entrance Hallway

7'0 x 13'4 (2.13m x 4.06m)

Double Glazed Door to Front Aspect, Coved Ceiling, Stairs to 1st Floor, Single Panel Radiator.

Lounge Area

12'0 x 12'9 (3.66m x 3.89m)

Bay Window to Front Aspect, Coved Ceiling, Double Panel Radiator, Fireplace in Wooden Mantle and Mantle Surround, T.V Point, Single Panel Radiator.

Kitchen/Diner

19'5 c 10'9 (5.92m c 3.28m)

LED Spot Lighting, Laminate Flooring, Breakfast Bar, Range Cooker, Space for Fridge/Freezer, Understairs Cupboard, Glass Splash Back Cupboards at Eye and Base Level, Blanco Sink with Drainer and Mixer Tap, Wine Rack, Modern Radiator.

Additional Reception Room/Downstairs Bedroom

10'5 x 12'4 (3.18m x 3.76m)

Laminate Flooring, Double Panel Radiator, French Doors Opening to Garden, Double Panel Radiator.

Ensuite

Vinyl Flooring, Heated Towel Rail, LED Spot Lighting, Extractor Fan, Shower Cubicle with Rainfall Shower, Mains Shower, Fully Tiled Splash Back.

Side Lobby

Door to Garage Area, Power and Lighting.

Store Room

11'3 x 5'5 (3.43m x 1.65m)

Metal Up and Over Door, Power and Lighting.

Landing

7'5 x 9'9 (2.26m x 2.97m)

Doors all rooms, Smoke Alarm, Coved Ceiling, Airing Cupboard.

Bedroom One

10'3 x 12'11 (3.12m x 3.94m)

Coved Ceiling, Storage Cupboard, Single Panel Radiator, Double Glazed Window to Front Aspect, T.V Point, Storage Cupboard.

Bedroom Two

11'6 x 8'6 (3.51m x 2.59m)

Laminate Flooring, Double Glazed Window to Rear Aspect, Loft Access, Storage Cupboard, Double Glazed Window to Rear Aspect, Single Panel Radaitor.

Bedroom Three

9'0 x 7'11 (2.74m x 2.41m)

Laminate Flooring, Coved Ceiling, Double Glazed Window to Front Aspect, Single Panel Radiator, Coved Ceiling.

Bathroom

7'5 x 5'6 (2.26m x 1.68m)

Low Level W.C, Wash Basin with Tiled Slash Back, Bath and Mixer Tap, Spot Lighting, Vinyl Flooring, Heated Towel Rail.

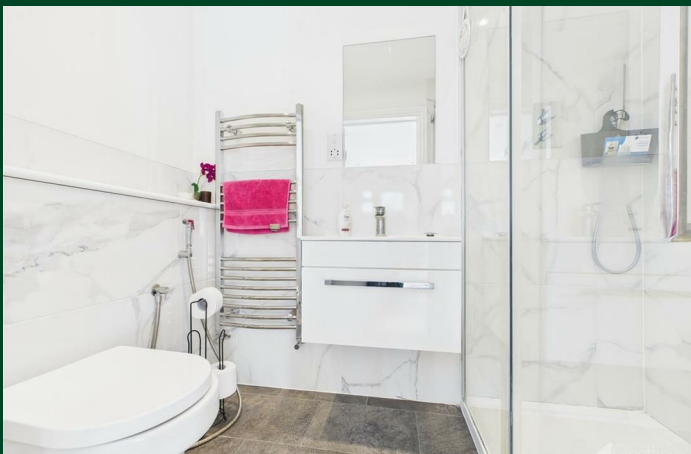
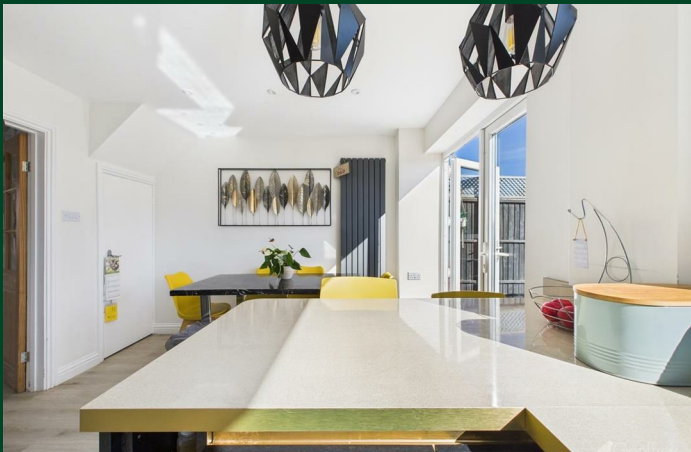
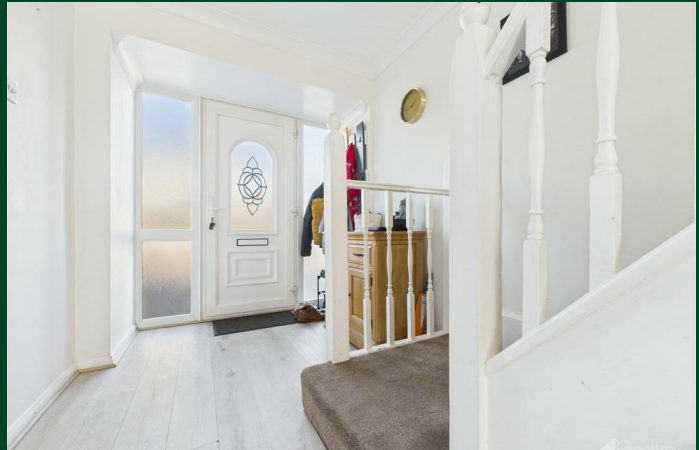
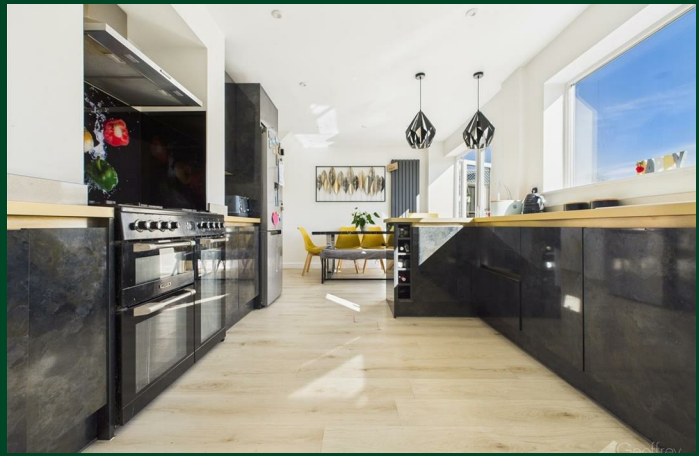
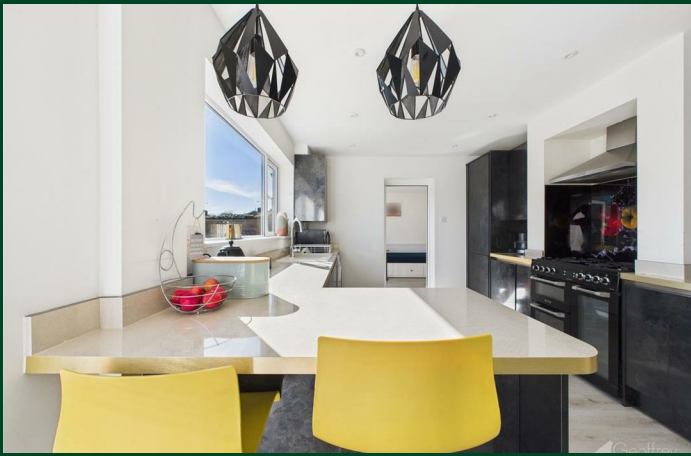
Zero Low Maintanance Rear Garden

Raised Patio Area, Picket Fencing, Outside Lighting, Outside Tap, Lower Patio Area, Artificial Grass Area, Timber Fencing with Concrete Posts.

Front Driveway

Block Paved Driveway for 3 Cars.

Local Information





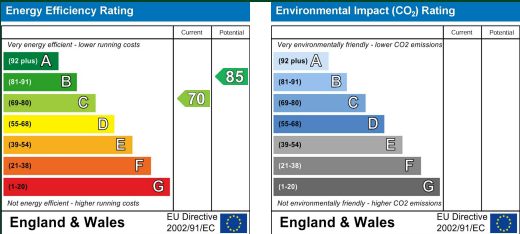


Floor Plan



Council Tax Details

Band: D



These particulars, whilst believed to be accurate are set out as a general outline only for guidance and do not constitute any part of an offer or contract. Intending purchasers should not rely on them as statements of representation of fact, but must satisfy themselves by inspection or otherwise as to their accuracy. No person in this firms employment has the authority to make or give any representation or warranty in respect of the property.

Old Harlow: 01279 444988

Email: harlow@geoffreymatthew.co.uk

Great Ashby: 01438 740111

Email: greatashby@geoffreymatthew.co.uk