



Cheviot Way, Stevenage, SG1 6GP

Geoffrey Matthew Property Management are delighted to offer for Let this well presented and spacious Two Bedroom first floor unfurnished flat, set within the sought after location of Great Ashby.

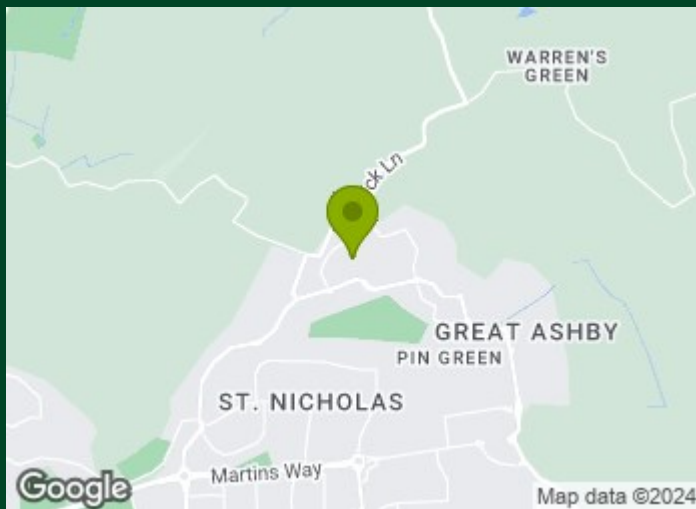
Internally the property accommodation comprises of an entrance hallway, spacious lounge/diner with French doors opening to Juliet balcony & modern kitchen. Two double bedrooms. The family bathroom has separate shower cubicle, bath, low level WC and basin, there is a separate cloakroom with low level WC and basin. The property has allocated parking.

Available now and Viewing is recommended.

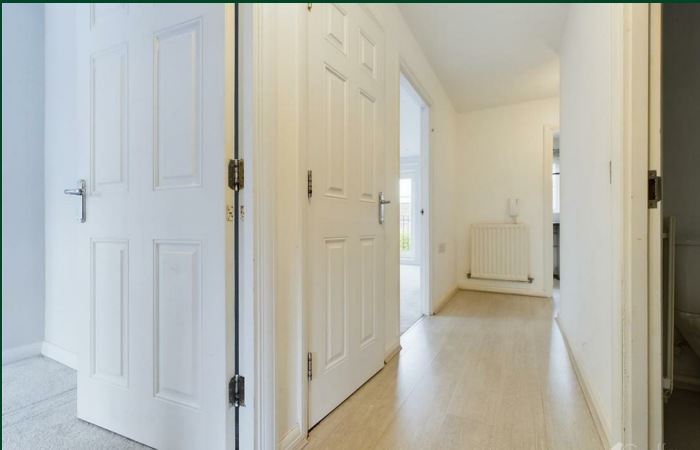
Holding Deposit payable to apply for this property - amount equivalent to one weeks rent.

£1,500 Per Calendar Month

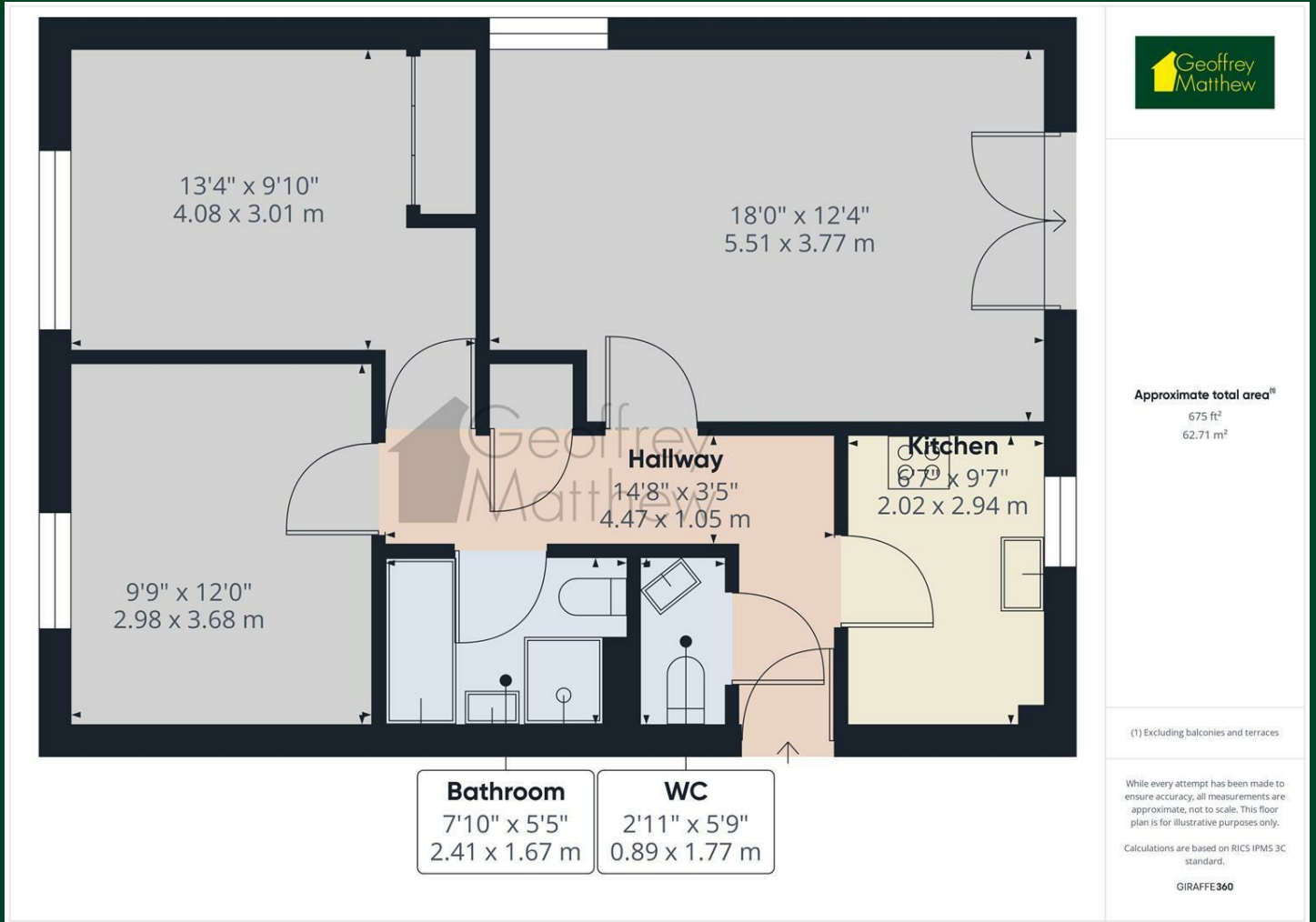
Cheviot Way, Stevenage, SG1 6GP



[Directions](#)



Floor Plan



Council Tax Details

North Herts Band C

These particulars, whilst believed to be accurate are set out as a general outline only for guidance and do not constitute any part of an offer or contract. Intending purchasers should not rely on them as statements of representation of fact, but must satisfy themselves by inspection or otherwise as to their accuracy. No person in this firm's employment has the authority to make or give any representation or warranty in respect of the property.

