

13 Noble Court, Chrysalis Park, Stevenage, Herts, SG1 4RH

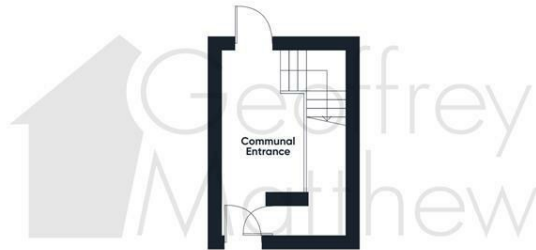
Peacefully positioned and very spacious two Bedroom top floor apartment with allocated parking, located in Chrysalis Park. Features include open plan kitchen, lounge and dining room, two double bedrooms, Ensuite to Master Bedroom and Family Bathroom, TWO JULIET BALCONIES and MAIN BALCONY from the Living Area,

Available Now - Viewing Highly Recommended.

A holding Deposit equivalent to one weeks rent is payable to apply for this property.

- Spacious Top Floor Two Bedroom Apartment
- Open Plan Kitchen/Lounge and Dining Room
- Two Double Bedrooms
- Ensuite to Master Bedroom and Family Bathroom
- Two Juliet Balconies and Main Balcony from Living Area
- Allocated Parking
- Available Now
- Viewing Highly Recommended

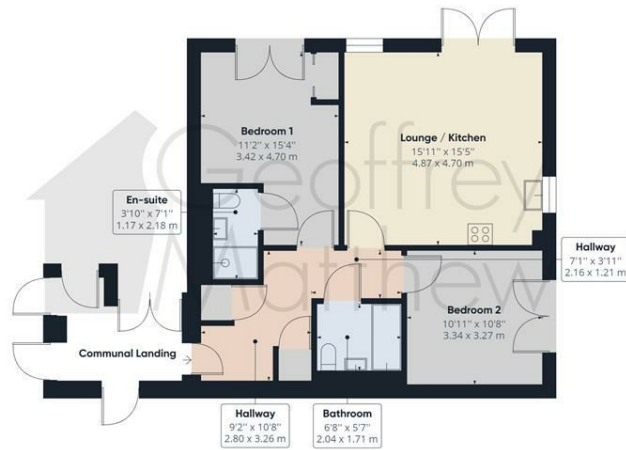
£1,350 Per Calendar Month



Floor 0 Building 1

Approximate total area⁽¹⁾

699.15 ft²
64.95 m²



Floor 3 Building 1

(1) Excluding balconies and terraces

While every attempt has been made to ensure accuracy, all measurements are approximate, not to scale. This floor plan is for illustrative purposes only.

GIRAFFE360

Energy Efficiency Rating		Environmental Impact (CO ₂) Rating	
	Current	Potential	
Very energy efficient - lower running costs			Very environmentally friendly - lower CO ₂ emissions
(92 plus) A			(92 plus) A
(81-91) B			(81-91) B
(69-80) C			(69-80) C
(55-68) D			(55-68) D
(39-54) E			(39-54) E
(21-38) F			(21-38) F
(1-20) G			(1-20) G
Not energy efficient - higher running costs			Not environmentally friendly - higher CO ₂ emissions
England & Wales	EU Directive 2002/91/EC	81	England & Wales
		81	EU Directive 2002/91/EC